


20 December 2024

PRELIMINARY SATELLITE-DERIVED DAMAGE ASSESSMENT



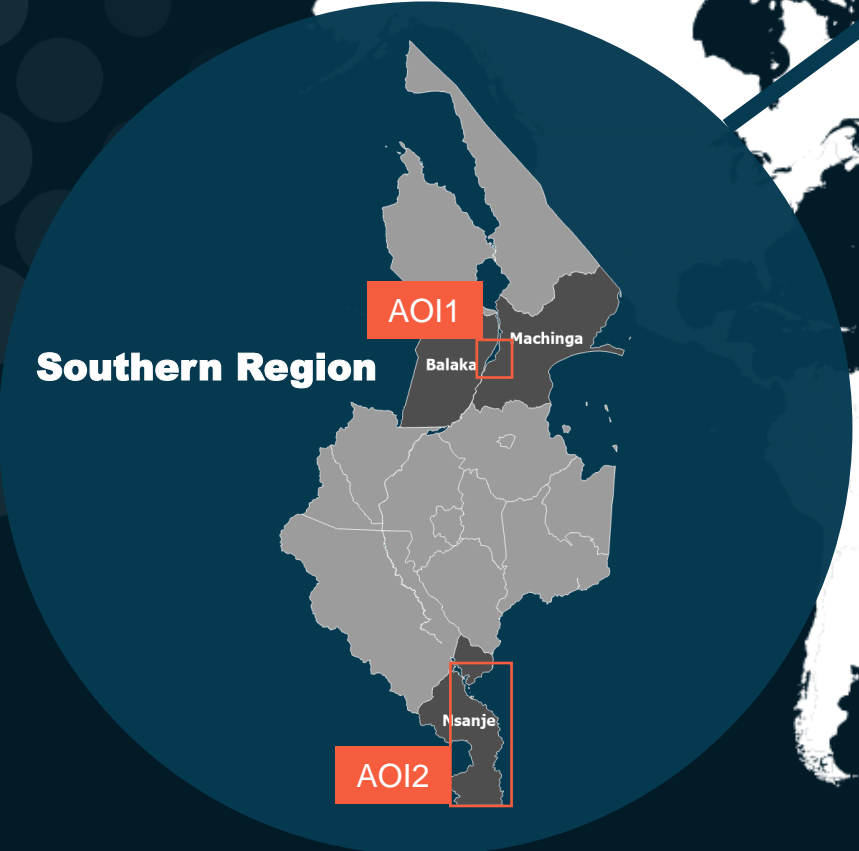
Balake, Machinga & Nsanje Districts, Southern
Region, Malawi

 Status: No major visible damage

 Further action(s): continue monitoring

Malawi

20 Dec. 2024



AOI 1 – 1: Balaka District, Southern Region

Image center:
15°03'02"S
35°13'01"E



No major visible damage & water increase



WorldView-3 / 04 May 2023



Pleiades / 19 December 2024

AOI 1 – 2: Balaka District, Southern Region

Image center:
15°03'27"S
35°13'18"E



No major visible damage & water increase



WorldView-3 / 04 May 2023



Pleiades / 19 December 2024

AOI 2 – 1: Nsanje District, Southern Region

Image center:
16°32'21"S
35°00'38"E



No major visible damage



WorldView-3 / 15 December 2022

Pleiades / 19 December 2024

AOI 2 – 2: Nsanje District, Southern Region

Image center:
16°34'49"S
35°07'37"E



No major visible damage & water increase



WorldView-3 / 15 December 2022



Pleiades / 17 December 2024

AOI 2 – 3: Nsanje District, Southern Region

Image center:
16°38'44"S
35°11'57"E



No major visible damage & water increase



WorldView-3 / 15 December 2022

Pleiades / 17 December 2024

AOI 2 – 4: Nsanje District, Southern Region

Image center:
16°44'14"S
35°16'57"E



No major visible damage



WorldView-3 / 15 December 2022

Pleiades / 17 December 2024

AOI 2 – 5: Nsanje District, Southern Region

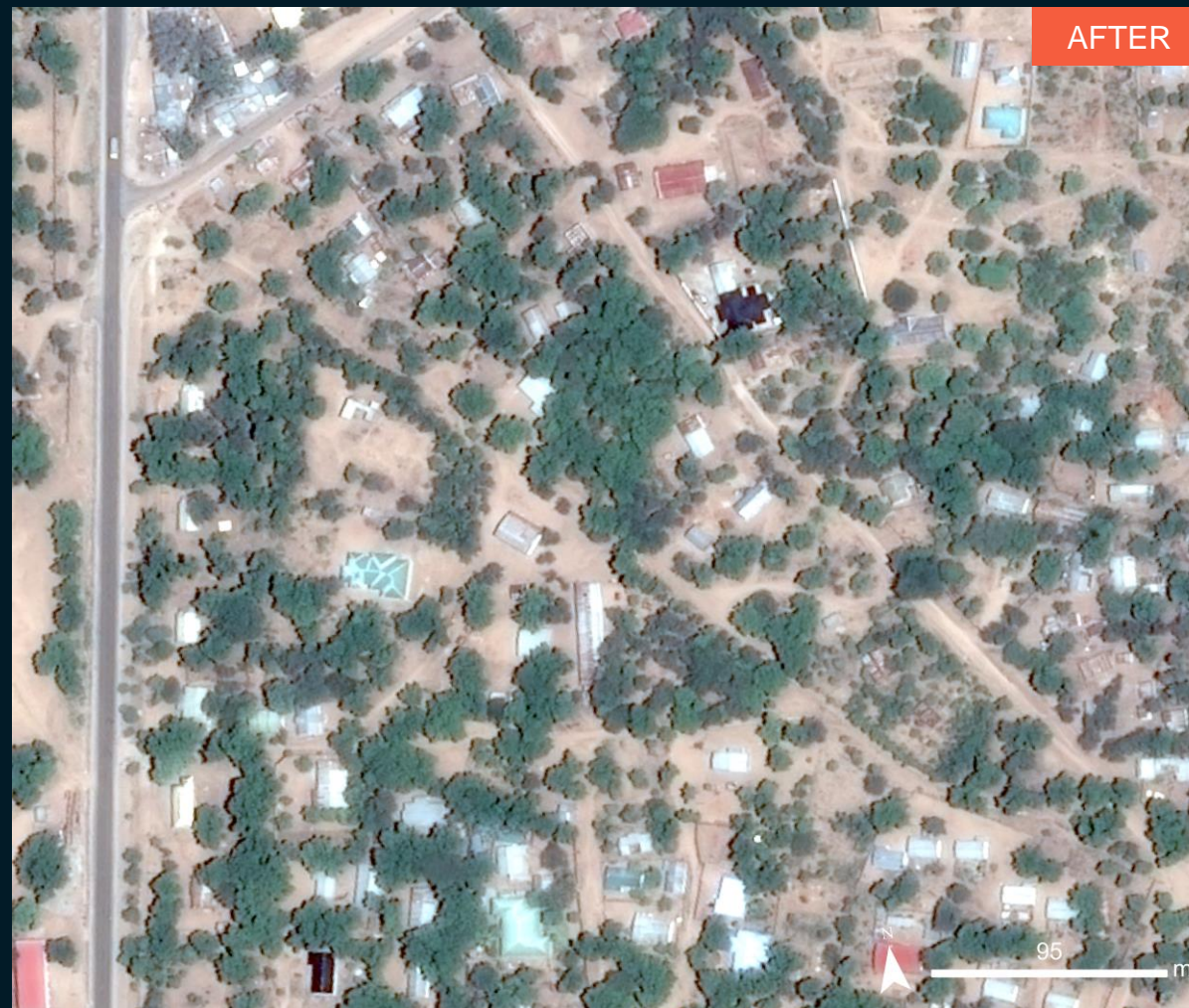
Image center:
16°55'13"S
35°15'37"E



No major visible damage



WorldView-2 / 22 September 2022



Pleiades / 17 December 2024

AOI 2 – 6: Nsanje District, Southern Region

Image center:
17°05'23"S
35°13'13"E



No major visible damage



WorldView-2 / 22 September 2022



Pleiades / 17 December 2024

SUMMARY OF FINDINGS

- No major damage could be observed from very-high resolution satellite images in Liwonde Town, Machinga & Balaka Districts, Southern Region as of 19 December 2024;
- No major damage could be observed from very-high resolution satellite images along the Shire river in Nsanje District, Southern Region as of 17 December 2024;
- Water increase along the Shire river observed in Machinga, Balaka & Nsanje Districts, Southern Region as of 17 & 19 December 2024.

COPYRIGHTS & SOURCES

Data sources:

(1) Satellite Image (Post-event): Pleiades

Acquisition date : 17 December 2024, 07:53 UTC & 19 December 2024, 07:37 UTC

Resolution: 50cm

Copyright: Includes Pleiades material © CNES (2024), Distribution

Airbus D&S

Source: Airbus D&S

(2) Satellite Image (Pre-event):

ESRI Basemap

(3) Ancillary data

Administrative boundaries: UNOCHA

Populated place: OpenStreetMap

Waterway: OpenStreetMap

Analysis: United Nations Satellite Centre (UNOSAT)

Production: United Nations Satellite Centre (UNOSAT)



@UNOSAT



@UNITAR.unosat



/UNOSAT



United Nations Satellite Centre (UNOSAT),
United Nations Institute for Training and
Research (UNITAR)
7 bis, Avenue de la Paix, CH-1202 Geneva 2,
Switzerland

T +41 22 917 4720
E unosat@unitar.org
www.unosat.org