


16 December 2024

PRELIMINARY SATELLITE-DERIVED DAMAGE ASSESSMENT



Mecufi and Cidade de Pemba Districts, Cabo Delgado Province, Mozambique

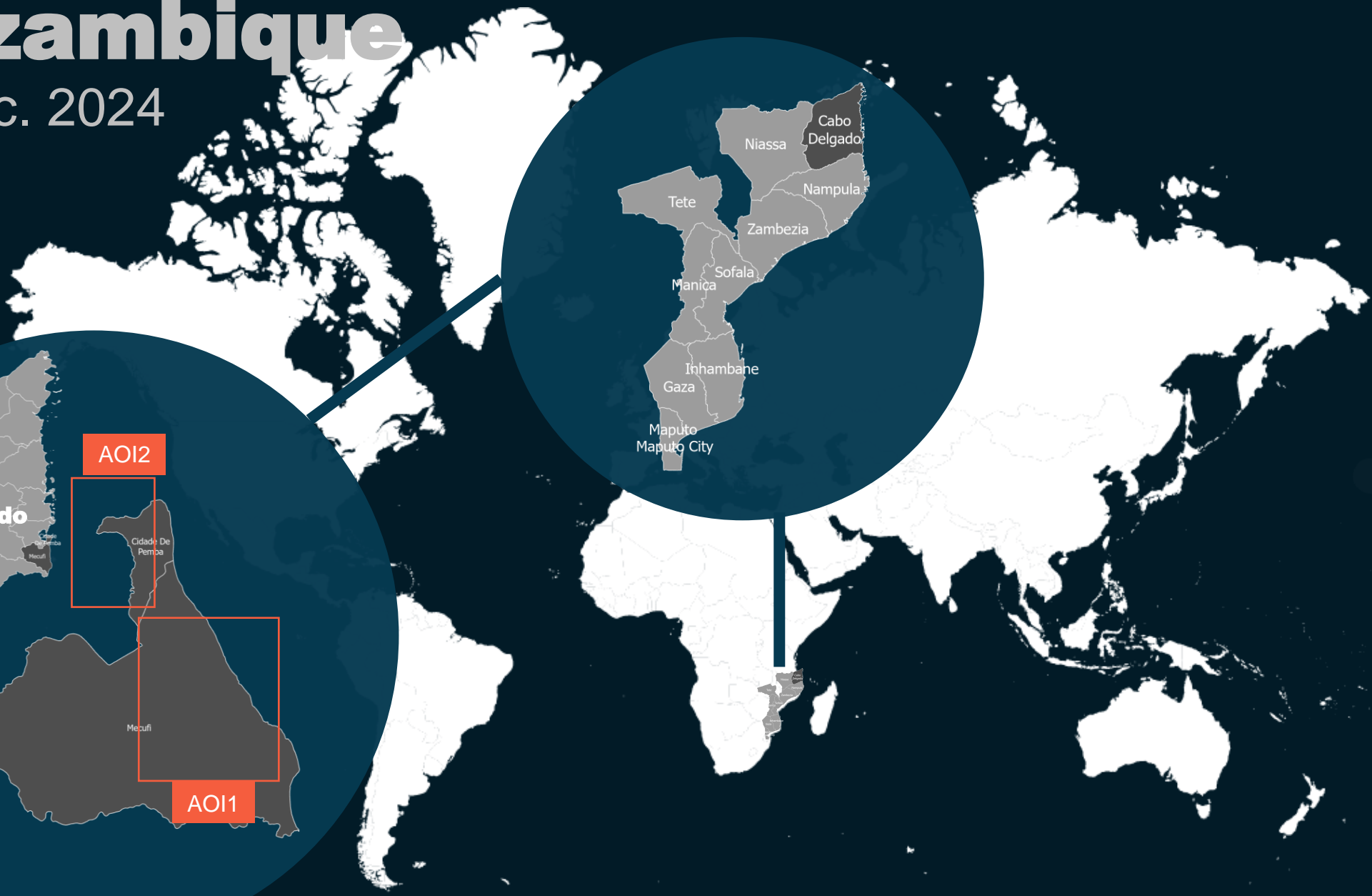
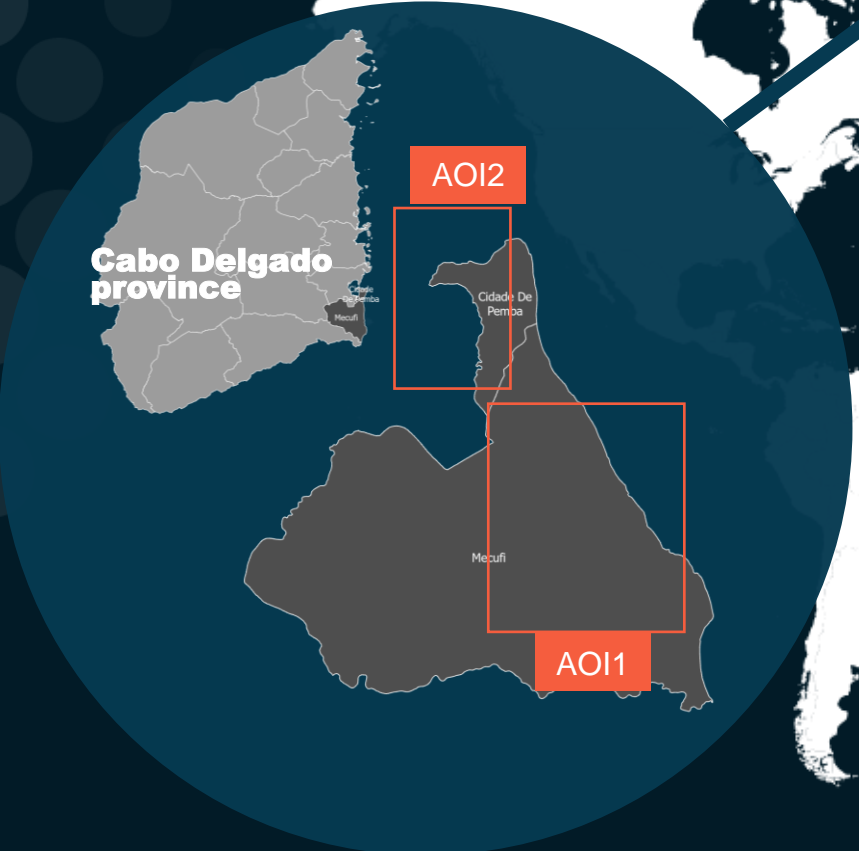
 Status: widespread damaged & destroyed structures

 Further action(s): continue monitoring



Mozambique

16 Dec. 2024



AOI 1 – 1: Muinde Village, Mecufi District, Cabo Delgado Province

Widespread damage & destroyed structures

Image center:
13°20'23"S
40°32'49"E



BEFORE

WorldView-3 / 06 November 2022



AFTER

Destroyed structures

Pleiades / 16 December 2024

AOI 1 – 2: Mecufi Town, Mecufi District, Cabo Delgado Province

Widespread damage & destroyed structures

Image center:
13°18'16"S
40°33'08"E



WorldView-3 / 06 November 2022



Pleiades / 16 December 2024

AOI 1 – 3: Ingoma Village, Mecufi District, Cabo Delgado Province

Widespread damage & destroyed structures

Image center:
13°14'09"S
40°32'46"E



BEFORE

WorldView-3 / 06 November 2022



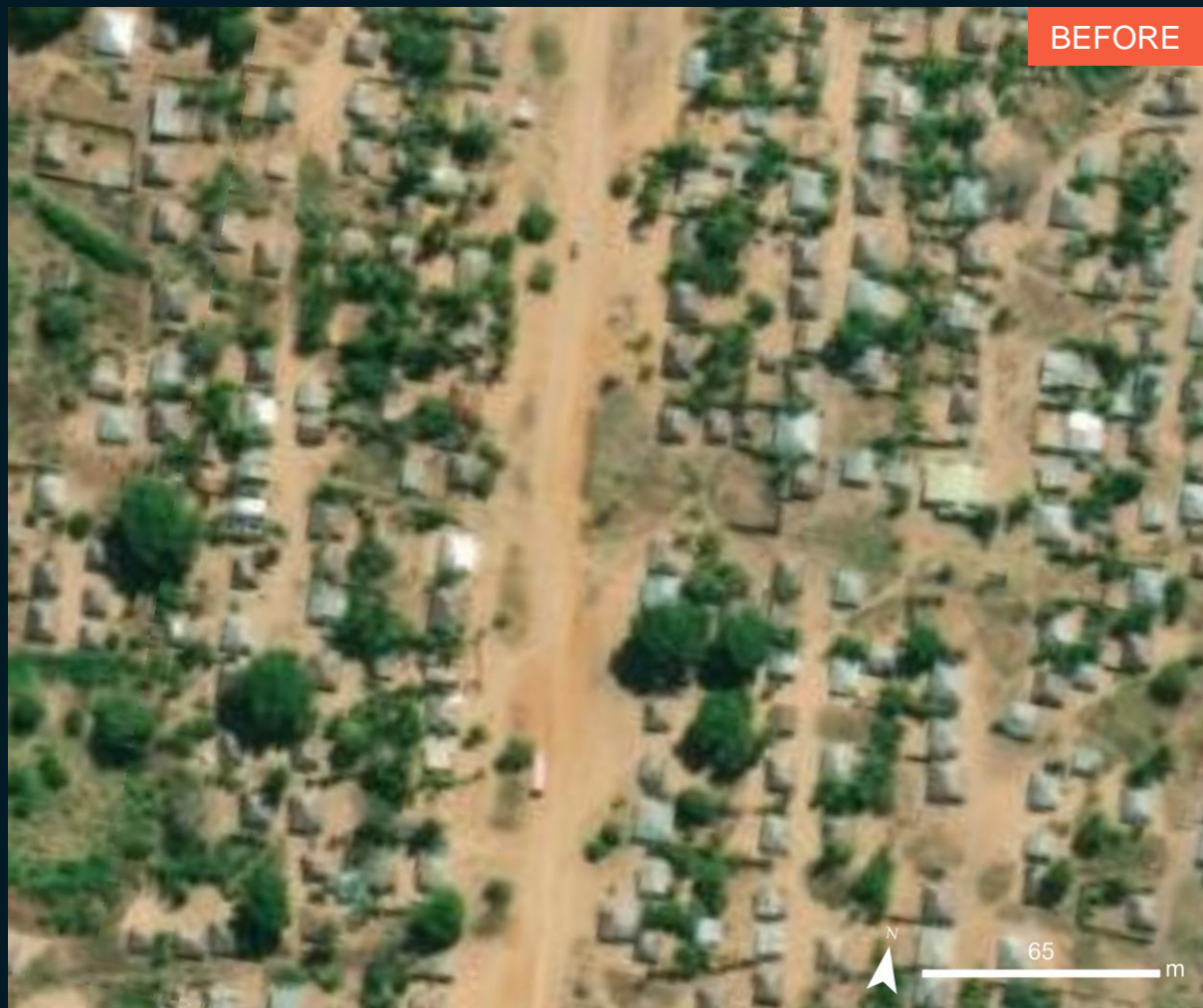
AFTER

Pleiades / 16 December 2024

AOI 1 – 4: Sicura Town, Mecufi District, Cabo Delgado Province

Widespread damage & destroyed structures

Image center:
13°06'56"S
40°32'36"E



BEFORE

WorldView-3 / 22 June 2023



AFTER

Pleiades / 16 December 2024

AOI 2 – 1: Muxara Suburb, Cidade de Pemba District, Cabo Delgado Province

Image center:
13°03'28"S
40°31'33"E



Damaged structures



WorldView-3 / 22 June 2023

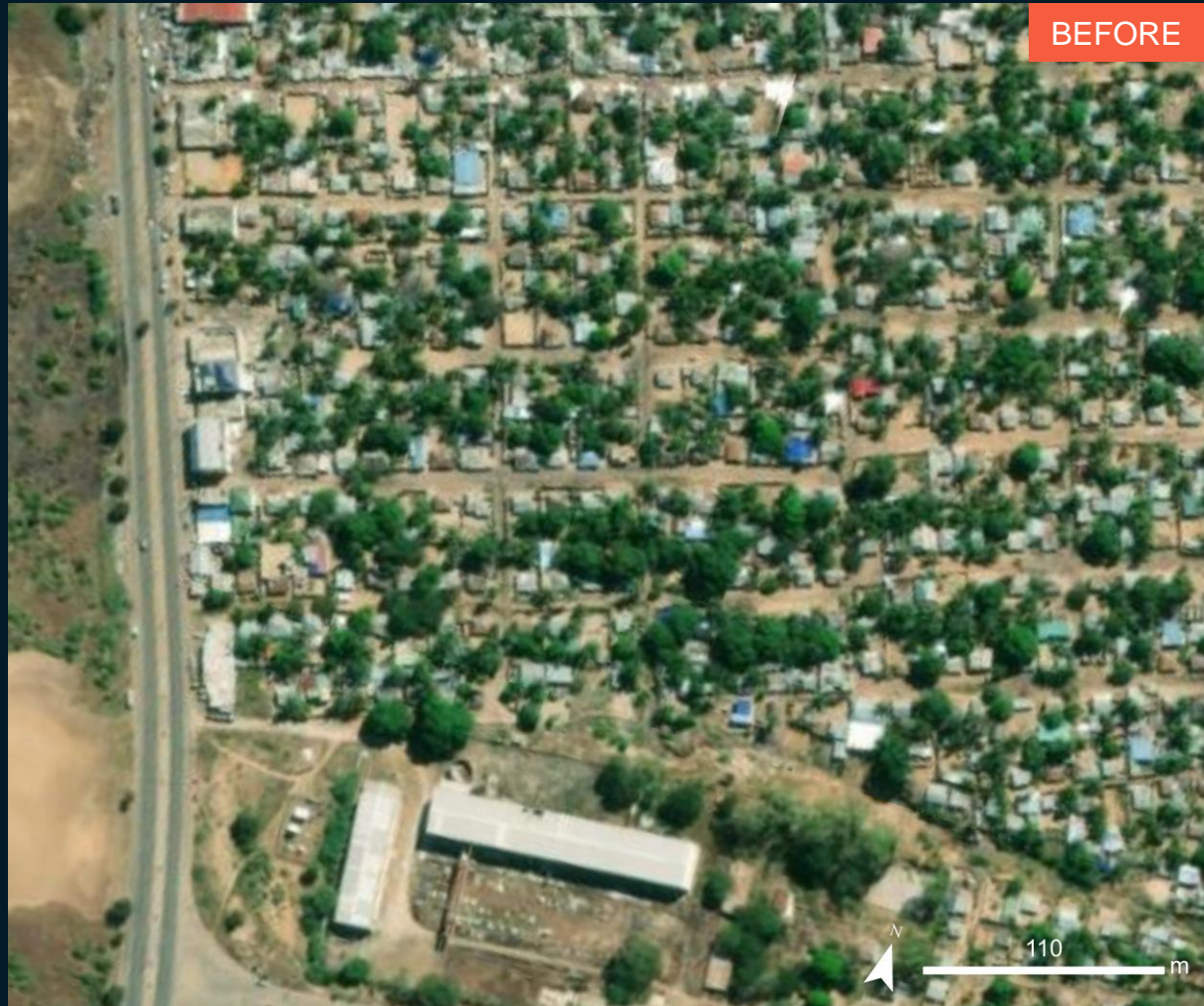


Pleiades / 16 December 2024

AOI 2 – 2: Bairro Alto Gingone Suburb, Cidade de Pemba District, Cabo Delgado Province

Damaged structures

Image center:
13°59'34"S
40°31'52"E



WorldView-3 / 22 June 2023

Pleiades / 16 December 2024

SUMMARY OF FINDINGS

- The analysis of the images from 16 December 2024 highlights a high level of destruction and damage caused by the passage of Cyclone Chido 25 in the Mecufi district, south of Cidade de Pemba;
- Widespread destroyed structures observed in Mecufi District, Cabo Delgado Province as of 16 December 2024;
- Damaged structures observed in Cidade de Pemba District, Cabo Delgado Province as of 16 December 2024.

Note: The change analysis was performed using Sentinel -1 SAR (Synthetic Aperture Radar) data. Due to the nature of signal, flood extent maybe underestimated in urban areas

COPYRIGHTS & SOURCES

Data sources:

(1) Satellite Image (Post-event): Pleiades

Acquisition date : 16 December 2024, 07:58 UTC

Resolution: 50cm

Copyright: Includes Pleiades material © CNES (2024), Distribution

Airbus D&S

Source: Airbus D&S

(2) Satellite Image (Pre-event):

ESRI Basemap

(3) Ancillary data

Administrative boundaries: UNOCHA

Populated place: OpenStreetMap

Waterway: OpenStreetMap

Analysis: United Nations Satellite Centre (UNOSAT)

Production: United Nations Satellite Centre (UNOSAT)



@UNOSAT



@UNITAR.unosat



/UNOSAT



United Nations Satellite Centre (UNOSAT),
United Nations Institute for Training and
Research (UNITAR)
7 bis, Avenue de la Paix, CH-1202 Geneva 2,
Switzerland

T +41 22 917 4720
E unosat@unitar.org
www.unosat.org