



21 DECEMBER 2020

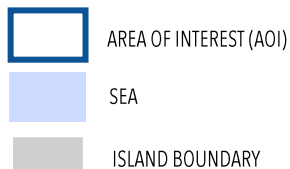
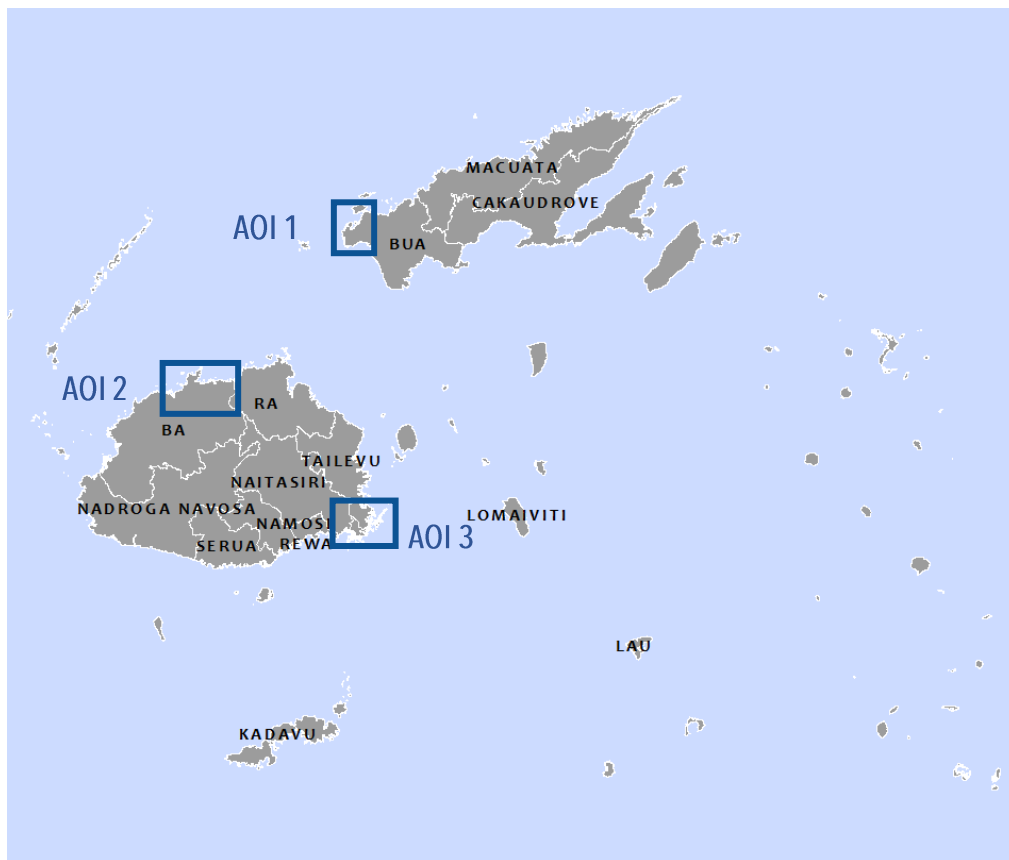
**PRELIMINARY SATELLITE-DERIVED DAMAGE ASSESSMENT
CENTRAL AND WESTERN DIVISIONS, VITI LEVU ISLAND AND NORTHERN
DIVISION, VANUA LEVU ISLAND, FIJI**

STATUS: Evidence of damaged buildings, infrastructure and land detected

FURTHER ACTION(S): CONTINUE MONITORING



OVERVIEW / BASED ON AOIs ASSESSED



Date of assessment validity:

21 December 2020

Impact and severity*:

- undetected
- limited impact potentially detected
- significant impact potentially detected

Potentially affected elements at risk

(indicate all that are applicable):

- buildings - residential
- buildings - commercial/ industry
- vulnerable structures (e.g. schools, hospitals, water, sanitation, power stations, etc.)
- internally displaced persons (IDP) camps
- transportation network
- agriculture
- other:

Data sources:

(1) pre-event (reference) image:
WorldView-2/ 1 January and 13 December 2020
GEOEYE-1 / 22 October 2020
Bing basemap

Copyright :2020 Digital Globe
Source : USGS-HDDS

(2) post-event images:
Pleiades / 19 and 20 December 2020

Copyright : CNES (2020), distribution Airbus D&S
Source : Airbus DS

(3) baseline data:
Fiji Islands Bureau of Statistics

* disclaimer (i.e. assessment yet to be validated with field-based information)

AOI 1-1 BUA TIKINA, BUA PROVINCE, NORTHERN DIVISION: DAMAGED STRUCTURES OBSERVED



 Image Boundary

Image Center :
178°43'6.589"E
16°40'7.811"S

BEFORE



WorldView-2/ 13 December 2020

AFTER



Pleiades / 19 December 2020

AOI 1-2 BUA TIKINA, BUA PROVINCE, NORTHERN DIVISION: DAMAGED STRUCTURES OBSERVED



 Image Boundary

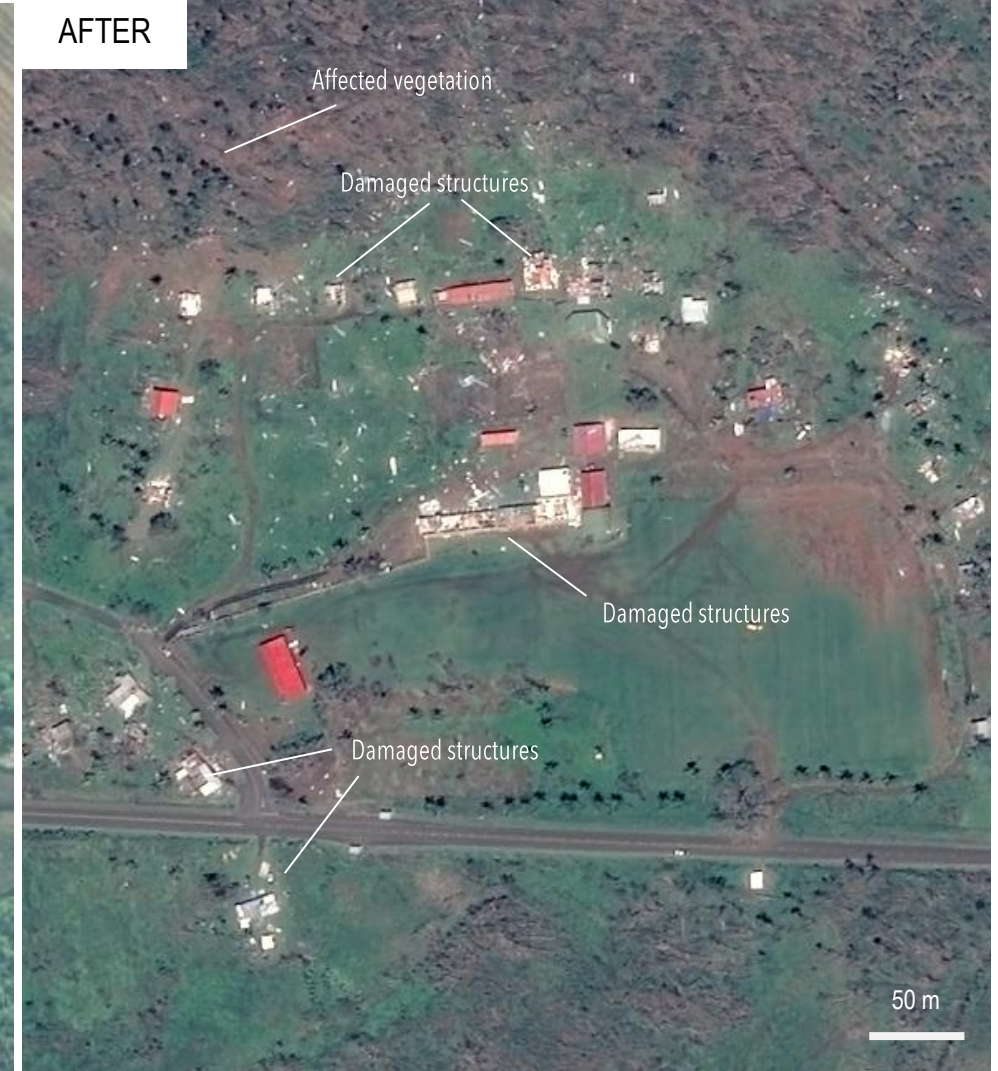
Image Center :
178°43'38.598"E
16°40'28.26"S

BEFORE



WorldView-2/ 13 December 2020

AFTER



Pleiades/ 19 December 2020

AOI 1-3 BUA TIKINA, BUA PROVINCE, NORTHERN DIVISION: DAMAGED STRUCTURES OBSERVED



 Image Boundary

Image Center :
178°42'26.107"E
16°41'19.763"S

BEFORE



WorldView-2/ 13 December 2020

AFTER



Pleiades/ 19 December 2020

AOI 1-4 BUA TIKINA, BUA PROVINCE, NORTHERN DIVISION: DAMAGED STRUCTURES OBSERVED

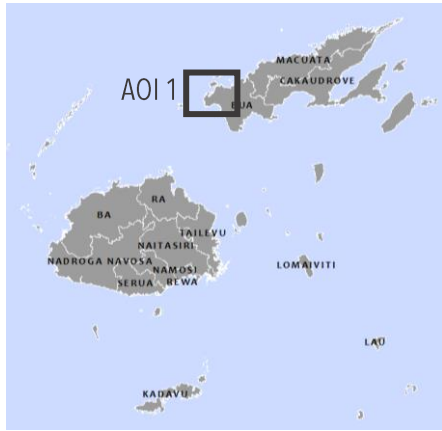


 Image Boundary

Image Center :
178°39'57.406"E
16°40'33.935"S



GEOEYE-1 / 22 October 2020



Pleiades / 19 December 2020

AOI 1-5 BUA TIKINA, BUA PROVINCE, NORTHERN DIVISION: DAMAGED STRUCTURES OBSERVED



 Image Boundary

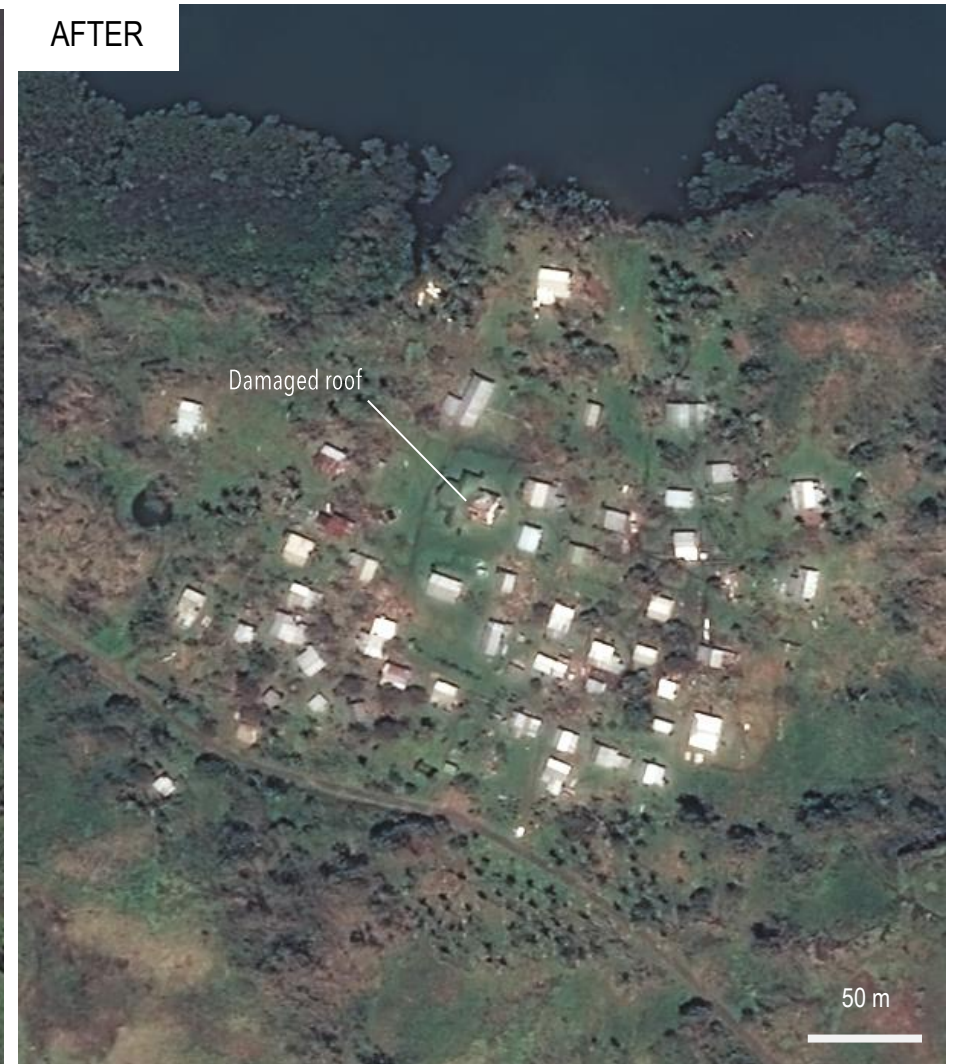
Image Center :
178°35'40.311"E
16°39'46.305"S

BEFORE



WorldView-2/ 13 December 2020

AFTER



Pleiades / 19 December 2020

AOI 1-6 BUA TIKINA, BUA PROVINCE, NORTHERN DIVISION: DAMAGED STRUCTURES OBSERVED



 Image Boundary

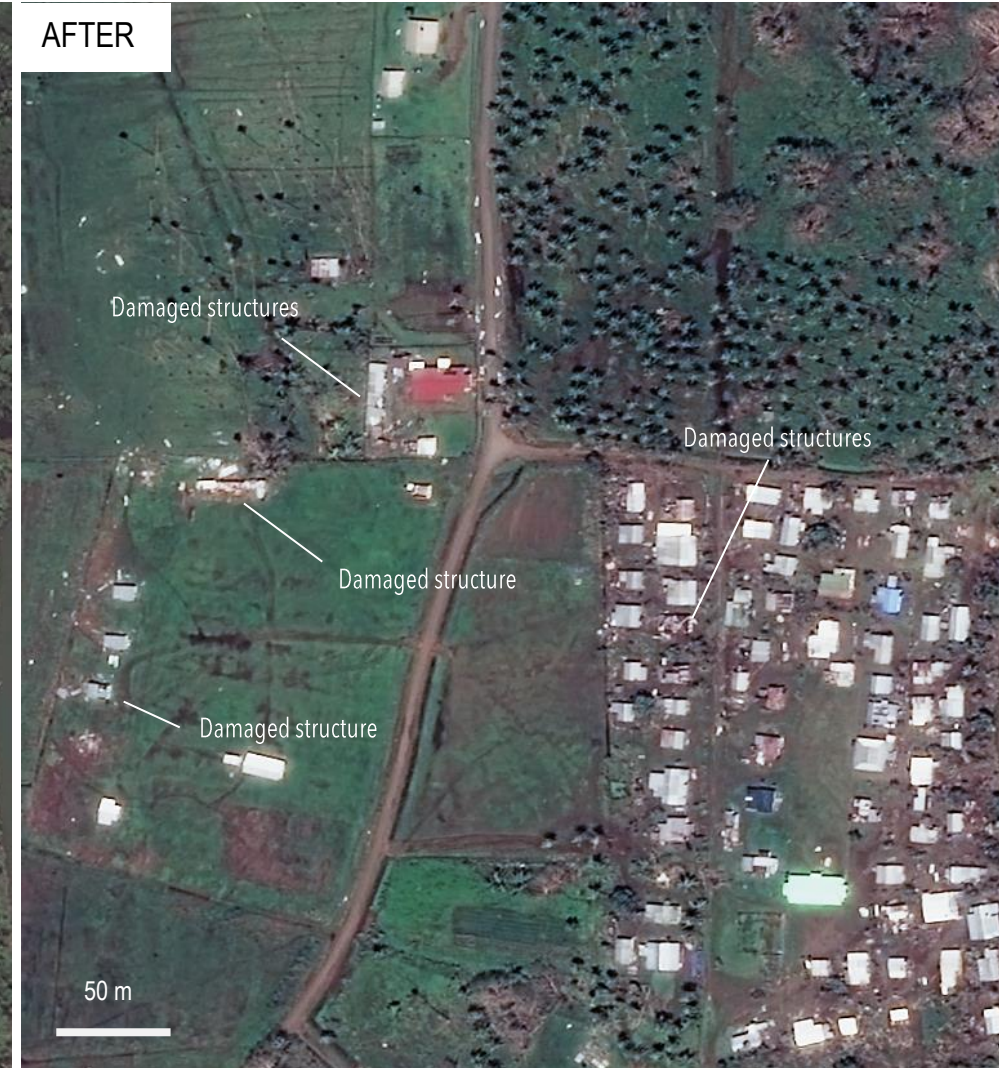
Image Center :
178°36'50.145"E
16°47'50.28"S

BEFORE



WorldView-2/ 13 December 2020

AFTER



Pleiades / 19 December 2020

AOI 2-1 BA PROVINCE, WESTERN DIVISION : NO WIDESPREAD DAMAGE OBSERVED

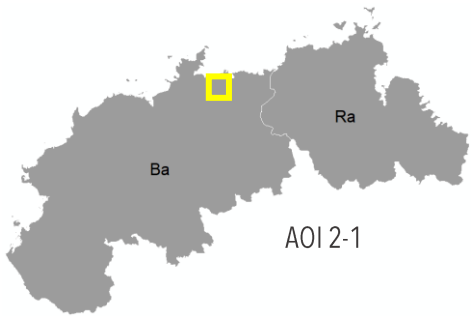
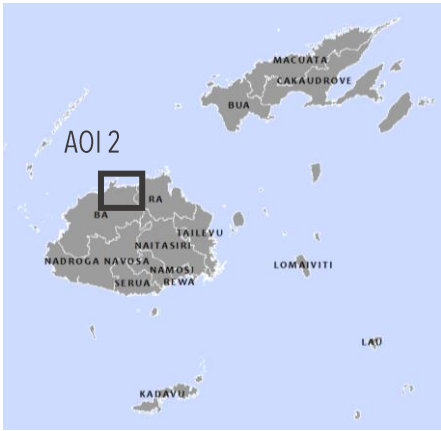


Image Center :
178°28'53.14"E
18°5'33.603"S



Bing basemap



Pleiades / 20 December 2020

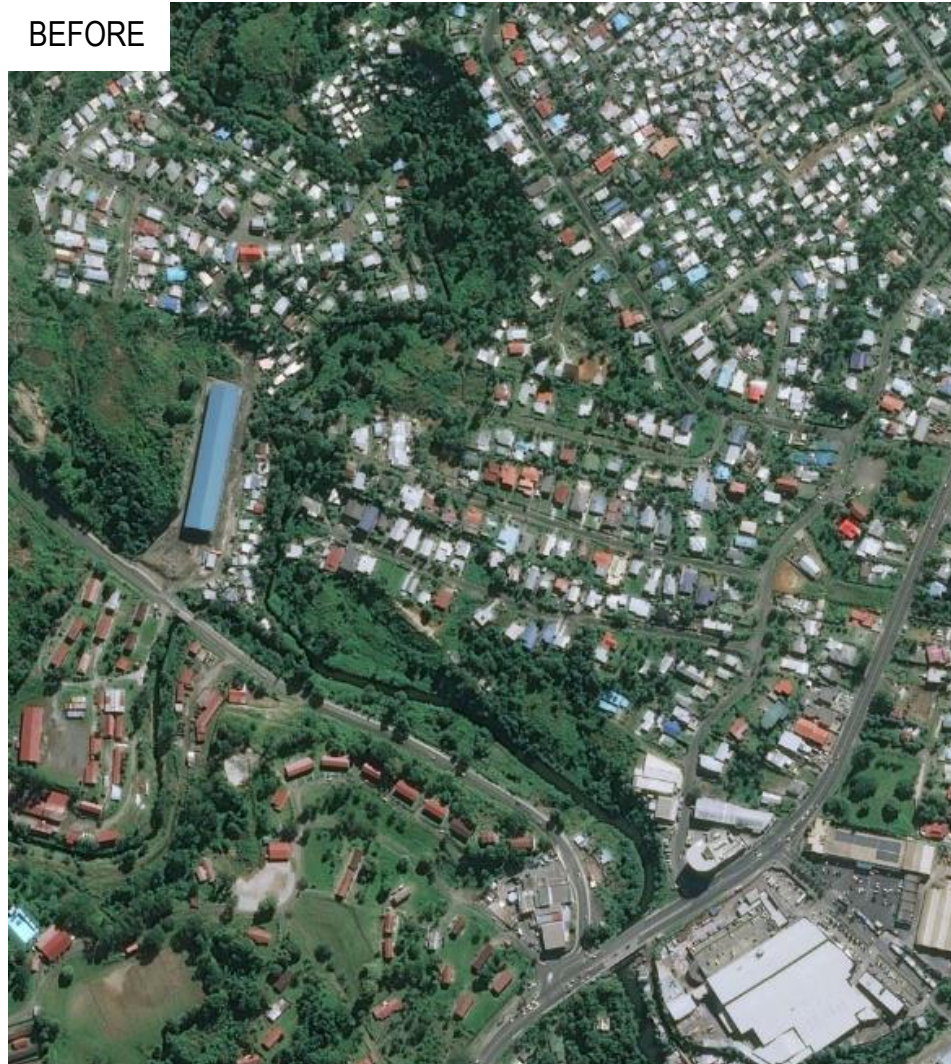
AOI 3-1 NAITASIRI AND SUVA TIKINA, REWA AND NAITASIRI PROVINCE, CENTRAL DIVISION: NO DAMAGED STRUCTURES OBSERVED



 Image Boundary

Image Center :
178°27'2.805"E
18°8'41.436"S

BEFORE



WorldView-2/ 1 January 2020

AFTER



Pleiades / 20 December 2020

AOI 3-2 SUVA TIKINA, REWA PROVINCE, CENTRAL DIVISION: NO DAMAGED STRUCTURES OBSERVED

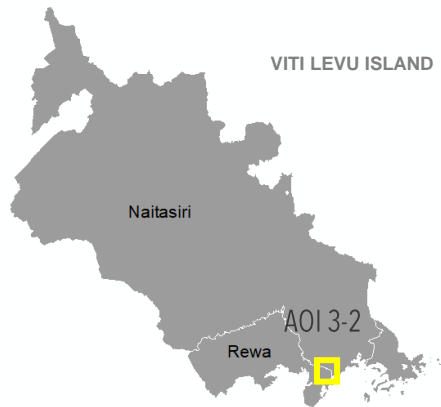


 Image Boundary

Image Center :
 178°27'50.936"E
 18°6'26.021"S



WorldView-2/ 1 January 2020



Pleiades / 20 December 2020

AOI 3-3 SUVA TIKINA, REWA PROVINCE, CENTRAL DIVISION: NO DAMAGED STRUCTURES OBSERVED



 Image Boundary

Image Center :
178°28'53.14"E
18°5'33.603"S



WorldView-2/ 1 January 2020



Pleiades / 20 December 2020

SUMMARY OF PRELIMINARY OBSERVATIONS AND FURTHER ACTIONS

Date of assessment validity: 21 December 2020

Maps: <http://www.unitar.org/maps>
Email: unosat@unitar.org
Operations: +41 22 767 4020
24/7 hotline: + 41 75 411 4998

- Widespread severe damage observed in Bua province, Northern division, Vanua Levu Islands as of 19 December 2020 (AOI1),
- No major visible structural damage could be observed in Ba and Rewa provinces, Western division, Viti Levu as of 20 December 2020 (AOI2 & 3).

Further/ anticipated actions from UNOSAT:

- no impact detected/ discontinue monitoring over specific AOI
- potential impact detected continue monitoring over specific AOIs full assessment to be conducted
- more data and/ or information needed to confirm impact severity

1, 2 & 3

* disclaimer (i.e. assessment yet to be validated with field-based information)