



06 AUGUST 2020

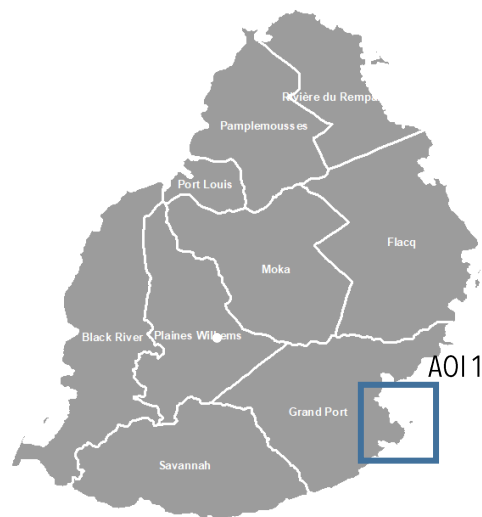
**PRELIMINARY SATELLITE BASED OIL SPILL ASSESSMENT
REEF OF POINTE D'ESNY, REPUBLIC OF MAURITIUS**

STATUS: OIL SPILL DETECTED

FURTHER ACTION(S): CONTINUE MONITORING



OVERVIEW / BASED ON AOIs ASSESSED



Date of assessment validity:

Impact and severity*:

- undetected
- limited impact potentially detected
- significant impact potentially detected

Potentially affected elements at risk (indicate all that are applicable):

- buildings - residential
- buildings - commercial/industry
- vulnerable structures (e.g. schools, hospitals, water, sanitation, power stations, etc.)
- internally displaced persons (IDP) camps
- transportation network
- agriculture
- other:

Data sources:

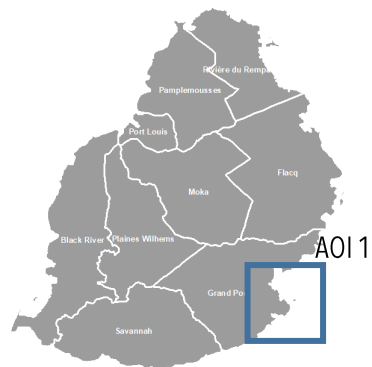
(1) pre-event (reference) image:
Sentinel-2, 17 July 2020, 06:24:49 UTC, Contains modified Copernicus Sentinel data [2020], Source: ESA

(2) post-event images:
Sentinel-2, 06 August 2020, 06:24:49 UTC, Contains modified Copernicus Sentinel data [2020], Source: ESA

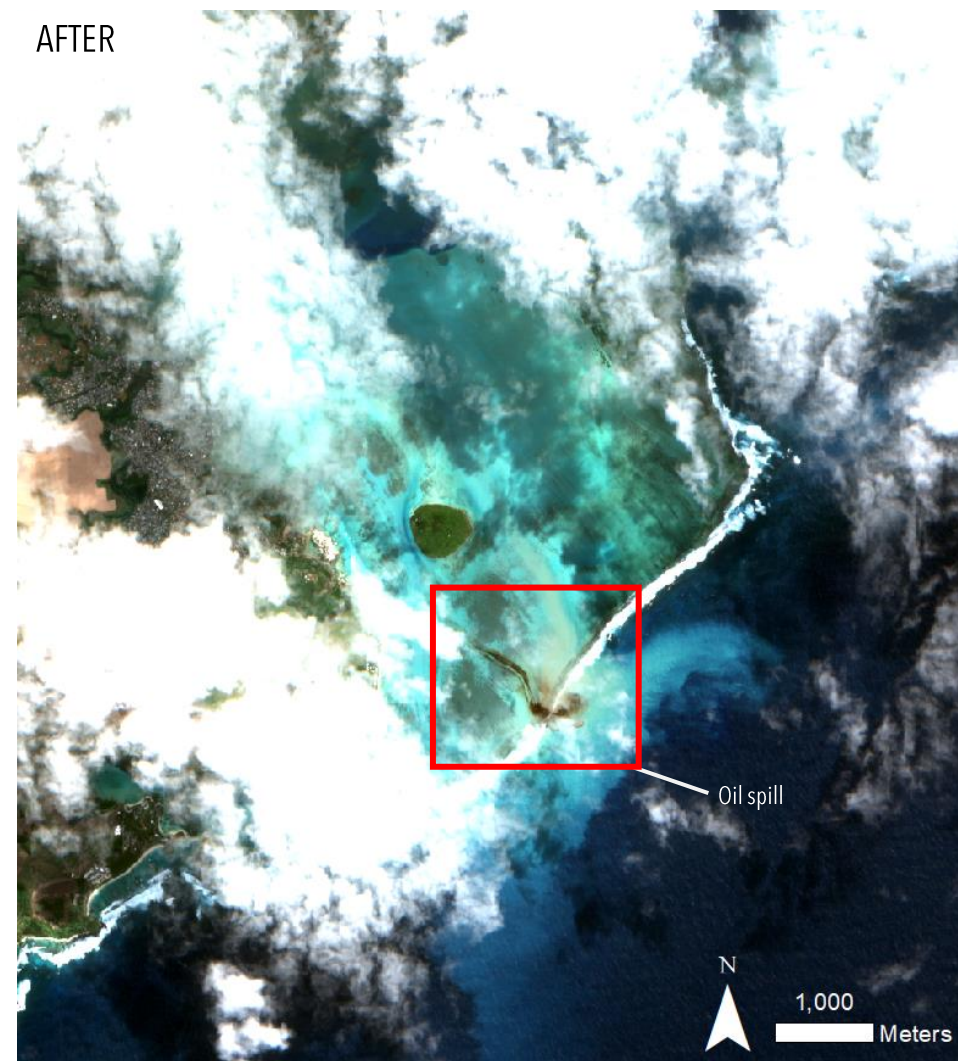
- (3) baseline data
- Administrative boundaries: OCHA
 - Populated places: OpenStreetMap

* disclaimer (i.e. assessment has yet to be validated with field-based information)

AOI1 REEF OF POINTE D'ESNY, REPUBLIC OF MAURITIUS: OIL SPILL DETECTED

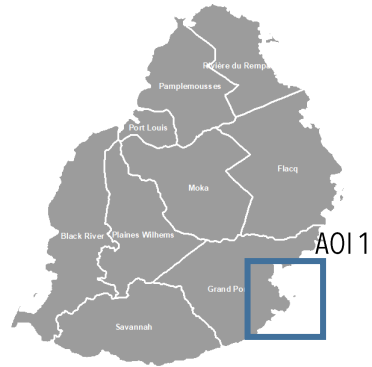


Sentinel-2 / 17 JULY 2020 / 06:24:49 UTC

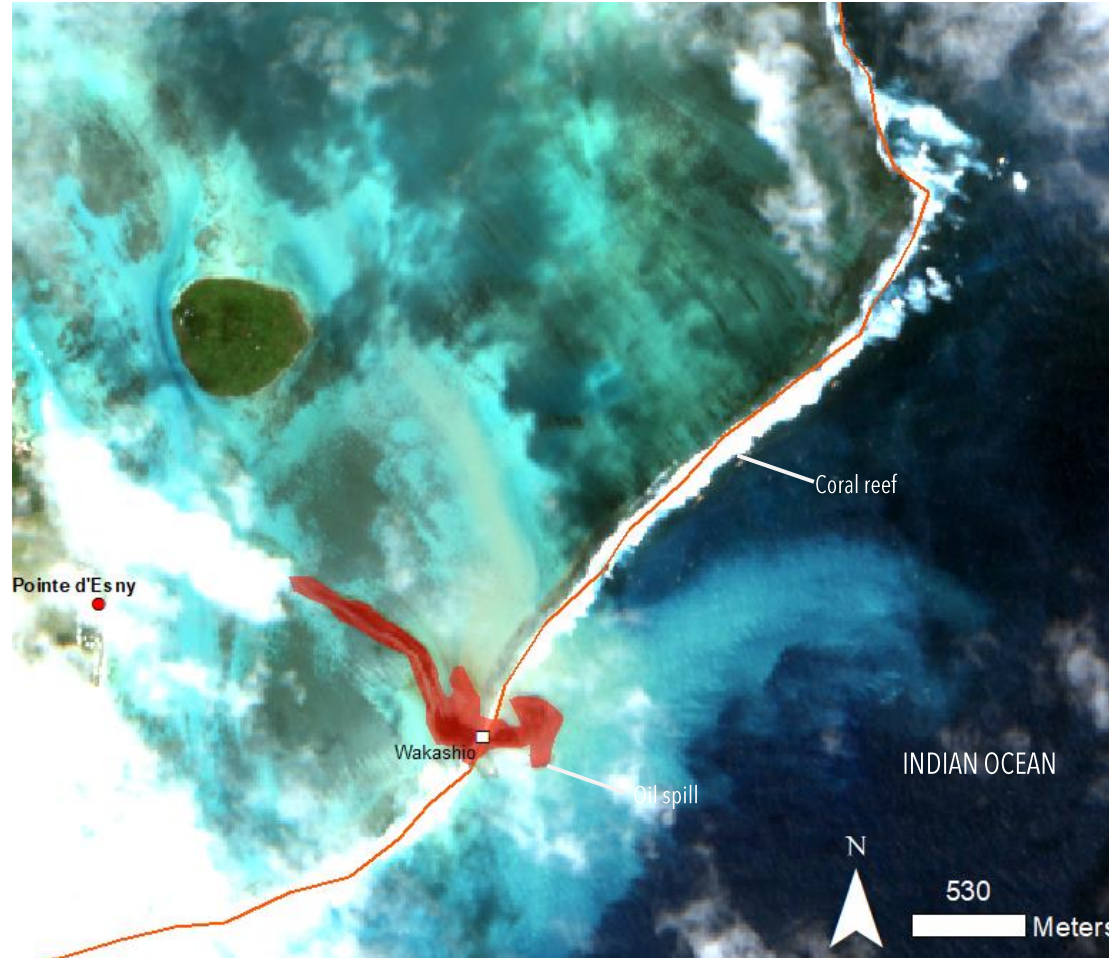


Sentinel-2 / 06 AUGUST 2020 / 06:24:49 UTC

AOI1 REEF OF POINTE D'ESNY, REPUBLIC OF MAURITIUS: OIL SPILL DETECTED



- SHIP ACCIDENT LOCATION
- CITIES/TOWNS/VILLAGES
- CORAL REEF
- AREA OF INTEREST (AOI)
- SATELLITE DETECTED OIL SPILL EXTENT



ANALYSIS BASED ON PRE- AND POST-EVENT IMAGES ACQUIRED ON 17 JULY AND 06 AUGUST 2020; DATA SOURCES: SENTINEL-2/ ESA

Potential satellite-detected oil spill in AOI1. The oil tanker appears to be immobilized at approximately 2 [km] offshore southeast of the Pointe d'Esny village.

Potentially affected elements at risk (indicate all that are applicable):

- buildings - residential
- buildings - commercial/industry
- vulnerable structures (e.g. schools, hospitals, water, sanitation, power stations, etc.)
- internally displaced persons (IDP) camps
- transportation network
- agriculture
- other: Coral reef & Marine ecosystem

SUMMARY OF PRELIMINARY OBSERVATIONS AND FURTHER ACTIONS

Date of assessment validity: 6 August 2020

Preliminary observations, impact and severity *:

- The shipwreck location is approximatively 2 [km] offshore southeast of Pointe d'Esny next to the coral reef;
- Oil spill observed from Sentinel-2 image acquired on 06 August 2020 – 06:24:49 UTC;
- Approximatively 0.23 [km²] of oil spill is detected from Sentinel-2 image acquired on 06 August 2020 – 06:24:49 UTC;
- Very High Resolution images acquired on the 07 August 2020 appear to be cloud covered.

Further/ anticipated actions from UNOSAT:

- no impact detected/ discontinue monitoring over specific AOI
- potential impact detected continue monitoring over specific AOIs
- full assessment to be conducted
- more data and/or information needed to confirm impact severity

* disclaimer (i.e. assessment has yet to be validated with field-based information)