



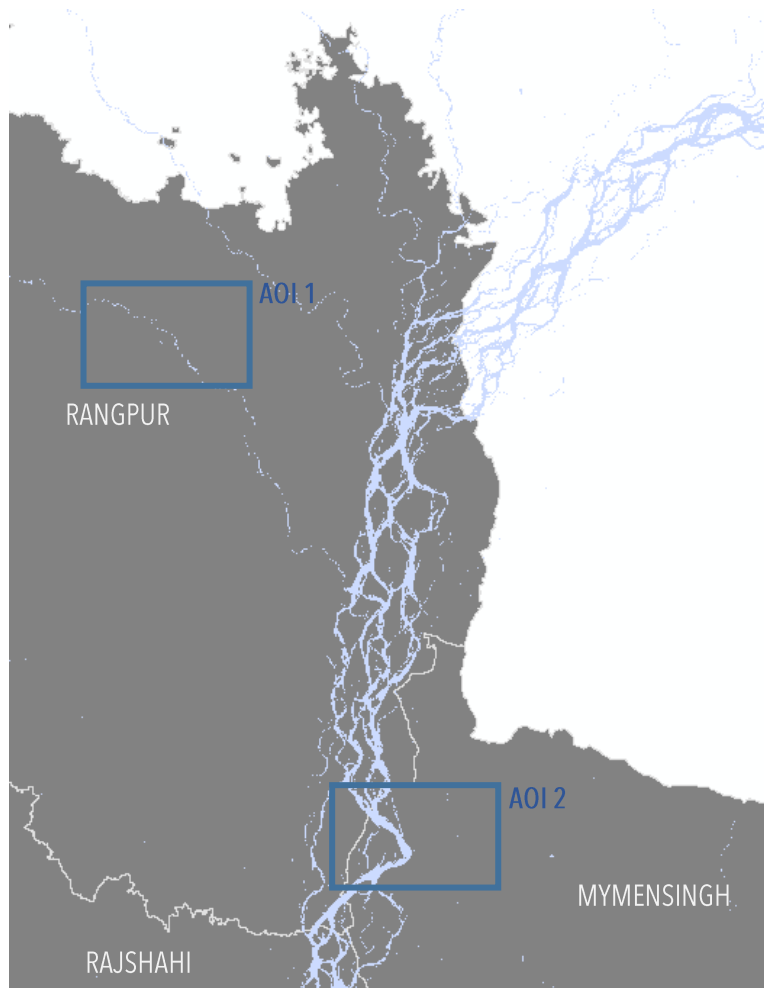
5 AUGUST 2020

## PRELIMINARY SATELLITE-DERIVED FLOOD ASSESSMENT RANGPUR AND MYMENSINGH DIVISION, BANGLADESH

STATUS: FLOODS DETECTED IN AGRICULTURAL AND URBAN AREAS  
FURTHER ACTION(S): CONTINUE MONITORING



## OVERVIEW / BASED ON AOIs ASSESSED



Date of assessment validity:

### Impact and severity\*:

- undetected
- limited impact potentially detected
- significant impact potentially detected

### Potentially affected elements at risk (indicate all that are applicable):

- buildings - residential
- buildings - commercial/ industry
- vulnerable structures (e.g. schools, hospitals, water, sanitation, power stations,
- internally displaced persons (IDP) camps
- transportation network
- agriculture
- other:

### Data sources:

(1) pre-event (reference) image:  
ESRI Base map

(2) post-event images:  
WorldView-2, 3 August 2020,  
[2020 Digital Globe]

(3) baseline data  
Administrative boundaries:  
Bangladesh Bureau of Statistics (BBS),  
OCHA ROAP,  
HDX

\* disclaimer (i.e. assessment yet to be validated with field-based information)



## AOI 1 - GANGACHARA UPAZILA, RANGPUR DISTRICT, RANGPUR DIVISION : FLOODS DETECTED

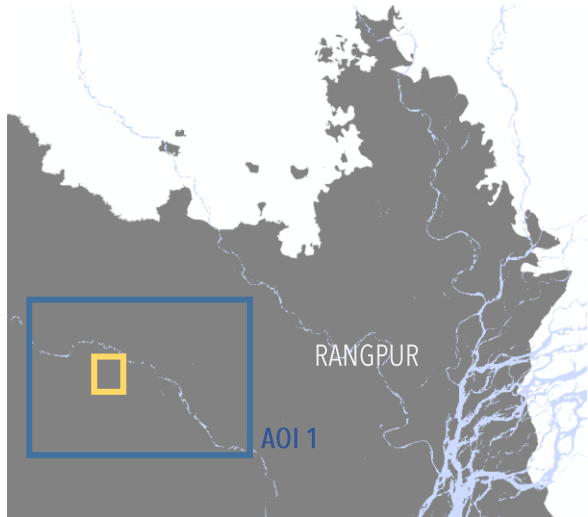
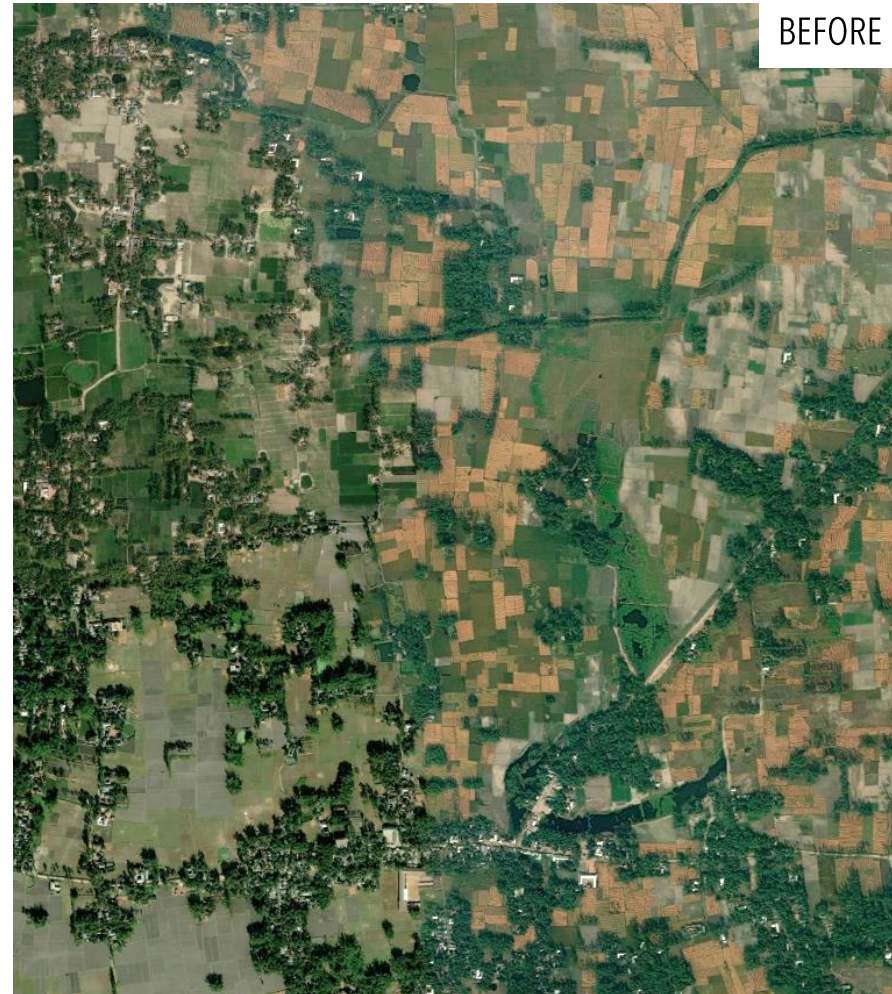
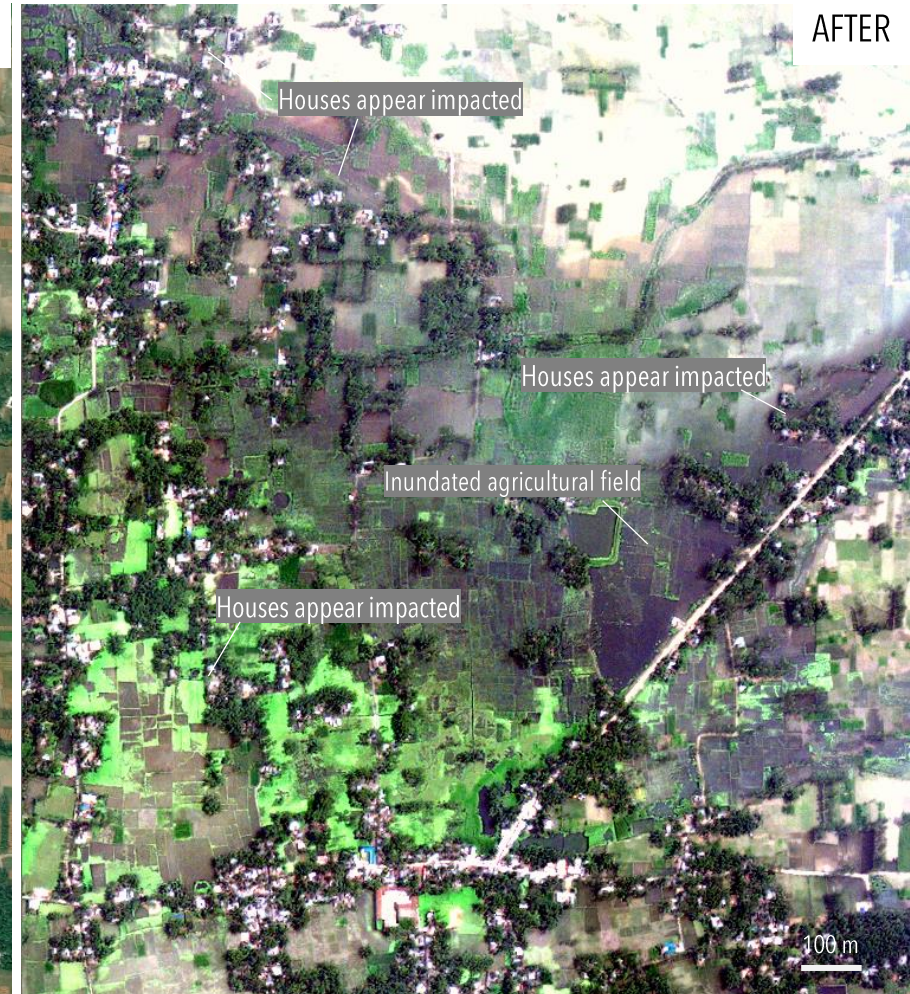


Image Center :  
89°17'52.334"E  
25°50'23.14"N



ESRI Base Map



WorldView-2 / 3 August 2020



## AOI 1 - KAUNIA UPAZILA, RANGPUR DISTRICT, RANGPUR DIVISION : FLOODS DETECTED



ESRI Base Map



WorldView-2 / 3 August 2020



Image Center :  
89°21'39.192"E  
25°46'11.134"N



## AOI 1 - KAUNIA UPAZILA, RANGPUR DISTRICT, RANGPUR DIVISION : FLOODS DETECTED

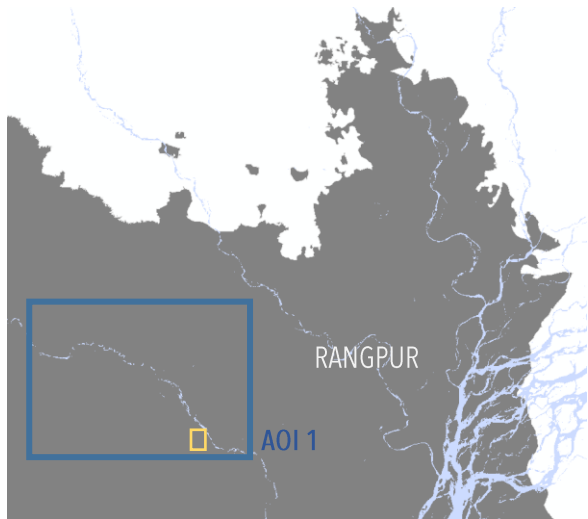
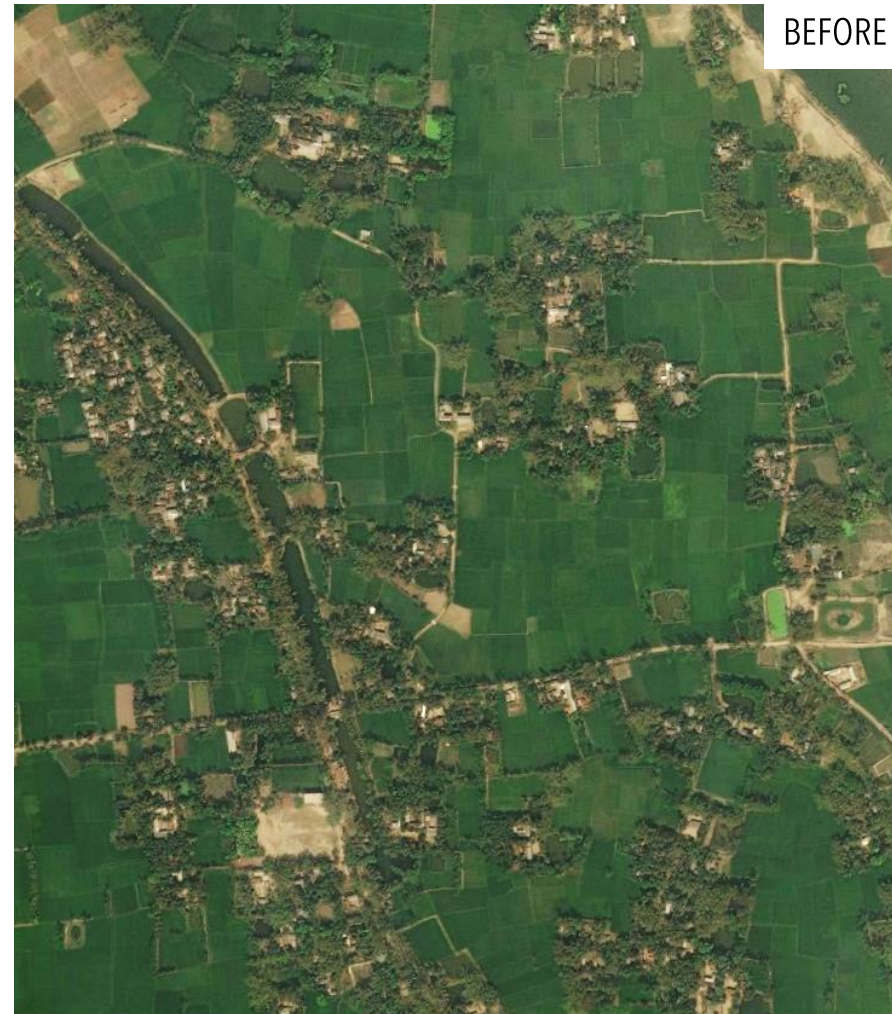


Image Center :  
89°26'27.833"E  
25°46'34.846"N



ESRI Base Map



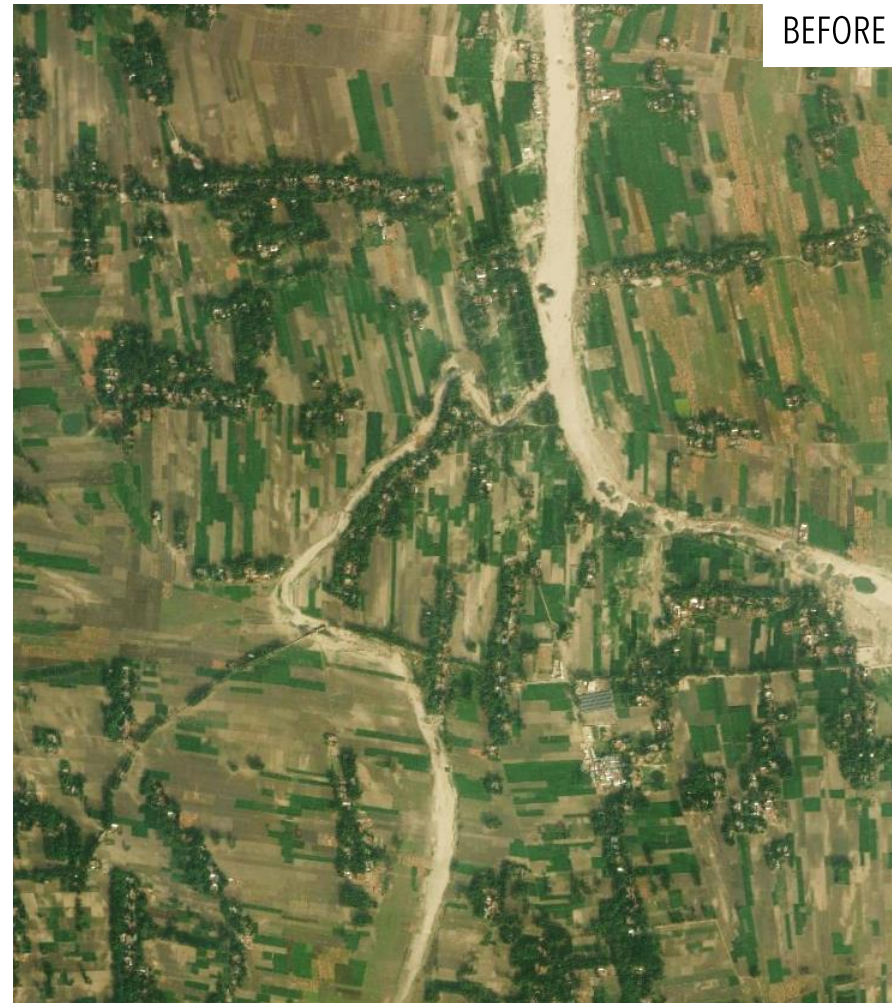
WorldView-2 / 3 August 2020



## AOI 2 – FULCHHARI UPAZILA, GAIBANDHA DISTRICT, RANGPUR DIVISION : FLOODS DETECTED NEAR THE JAMUNA RIVER



Image Center :  
89°39'24.73"E  
25°11'46.508"N



ESRI Base Map



WorldView-2 / 3 August 2020



## AOI 2 – FULCHHARI UPAZILA, GAIBANDHA DISTRICT, RANGPUR DIVISION : FLOODS DETECTED NEAR THE RIVER

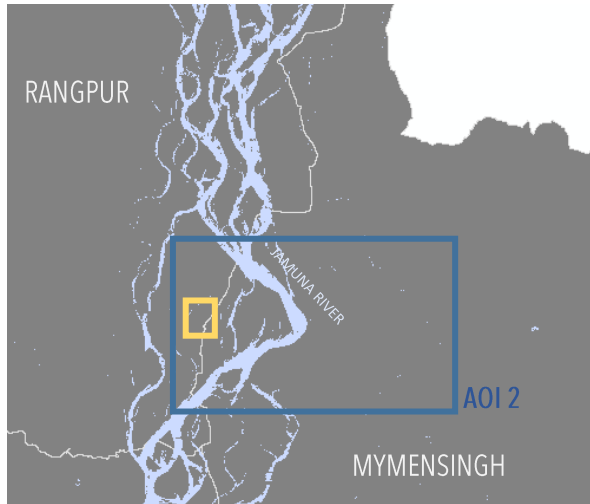
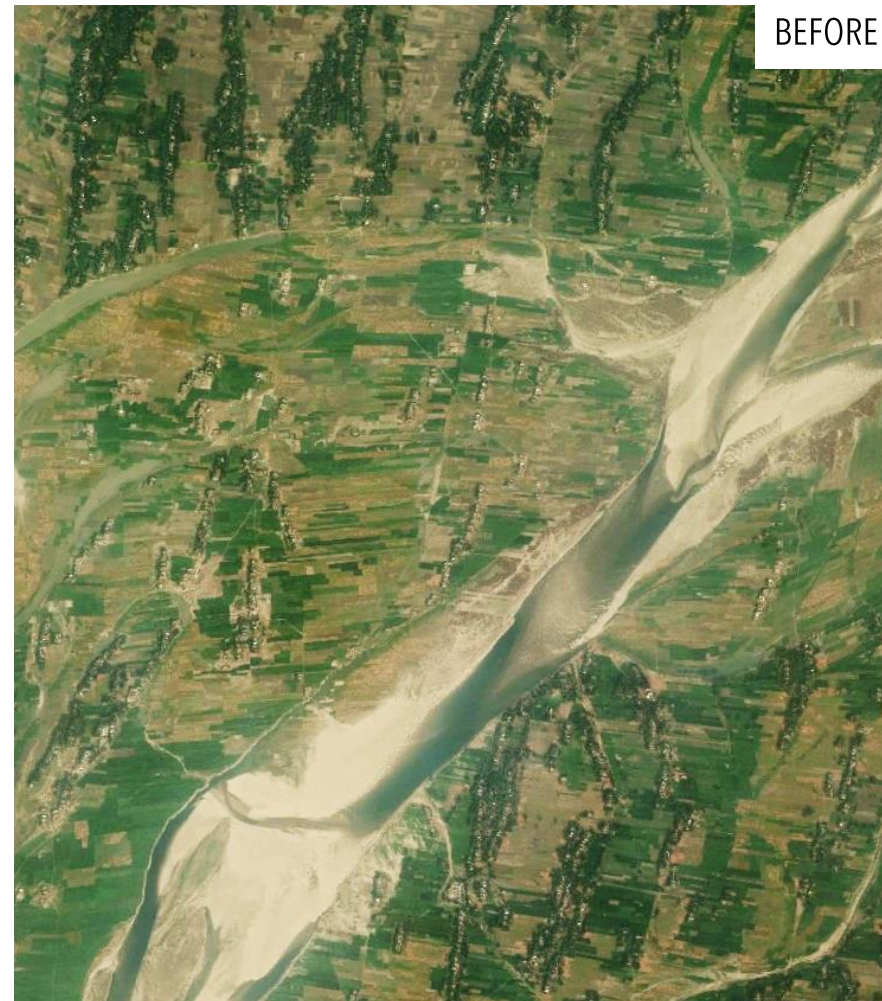
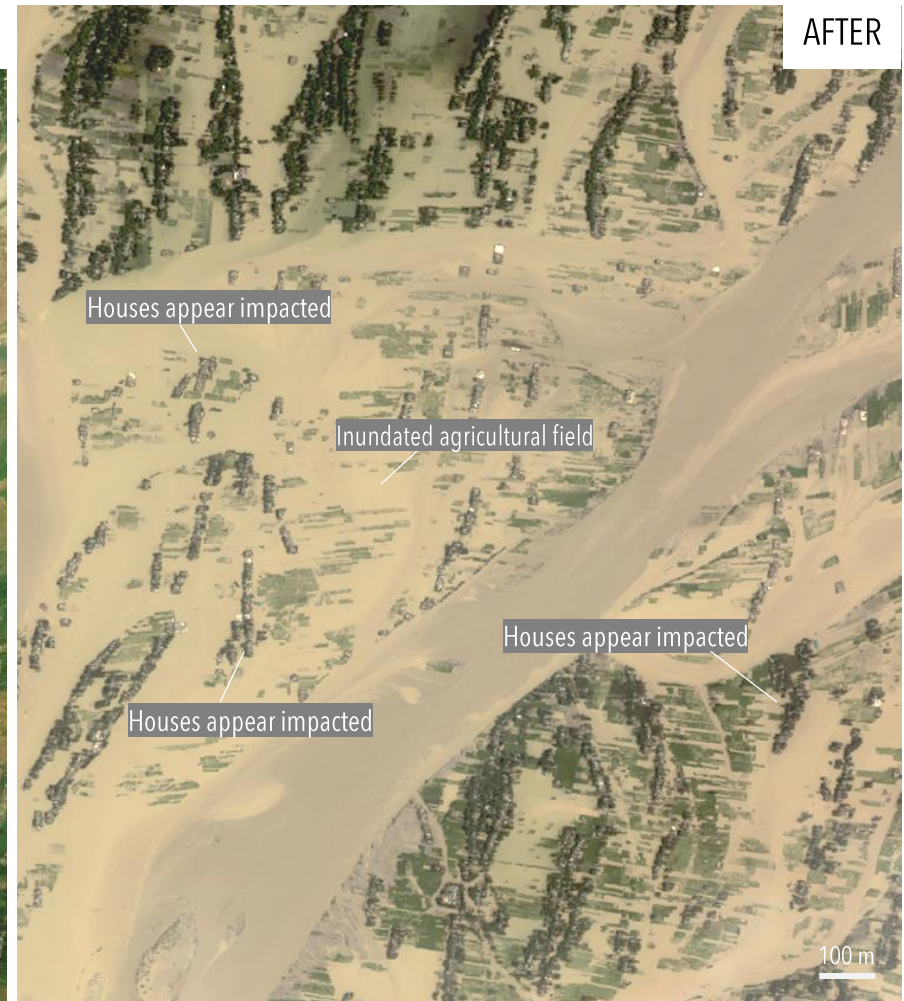


Image Center :  
89°38'27.98"E  
25°9'41.239"N



ESRI Base Map



WorldView-2 / 3 August 2020



## AOI 2 – BAKSHIGANJ UPAZILA, JAMALPUR DISTRICT, MYMENSINGH DIVISION : FLOODS DETECTED

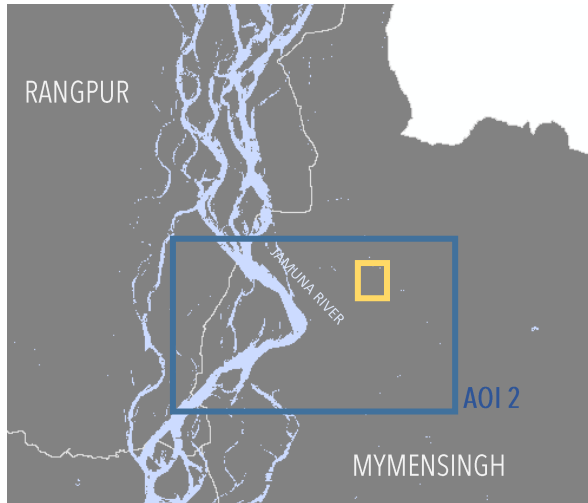


Image Center :  
89°48'45.885"E  
25°11'48.487"N



ESRI Base Map



WorldView-2 / 3 August 2020



## AOI 2 - ISLAMPUR AND BAKSHIGANJ UPAZILA, JAMALPUR DISTRICT, MYMENSINGH DIVISION : FLOODS DETECTED

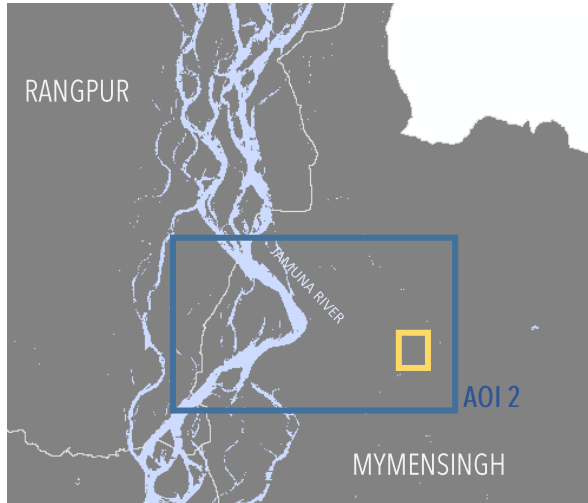
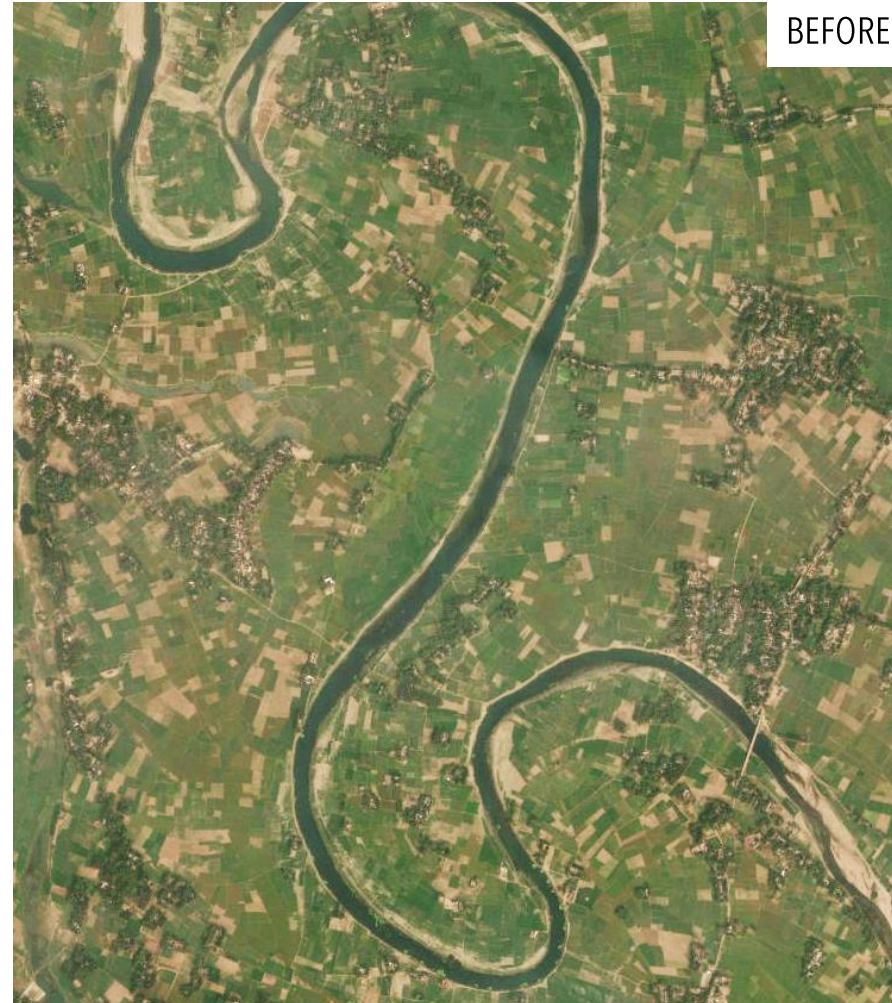
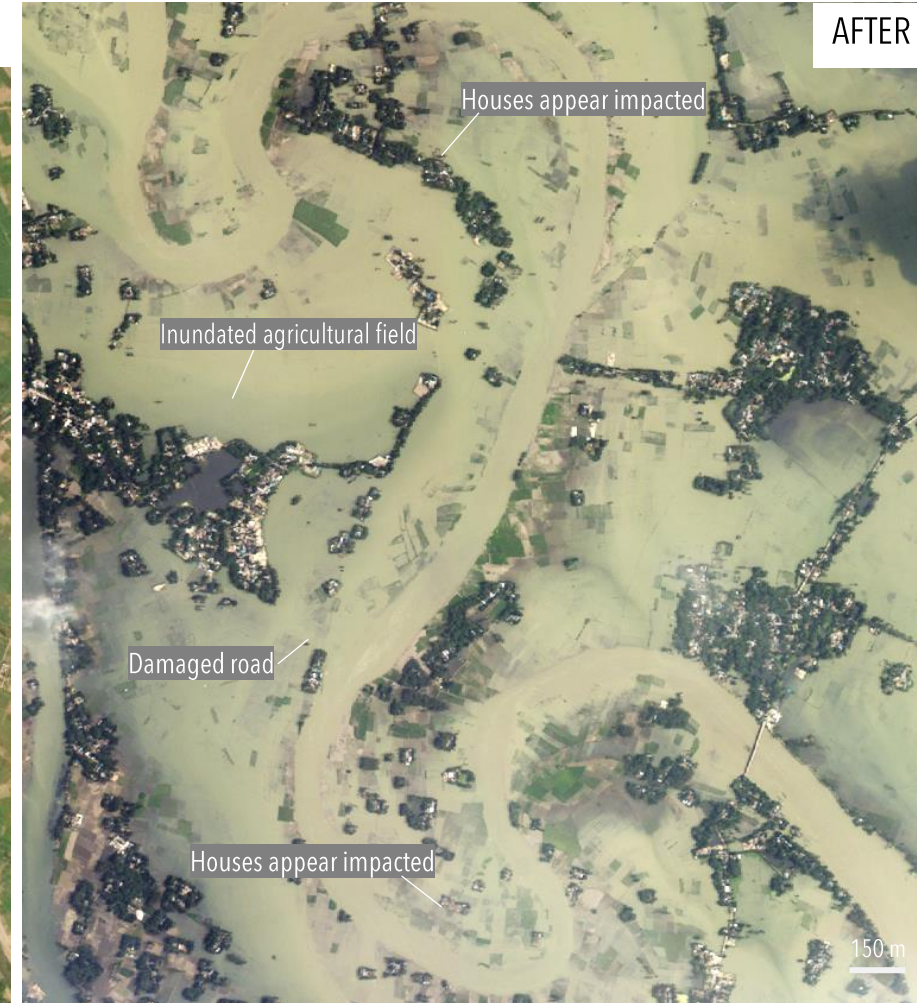


Image Center :  
89°51'43.407"E  
25°7'32.731"N



ESRI Base Map



WorldView-2 / 3 August 2020



## SUMMARY OF PRELIMINARY OBSERVATIONS AND FURTHER ACTIONS

**Date of assessment validity: 5 AUGUST 2020**

### **Preliminary observations, impact and severity \*:**

- Flood waters detected in both AOIs
- Severe impact to the agricultural field can be observed in AOI2 as of 03 August 2020
- Many houses are inundated or surrounded by flood waters in AOI 2 as of 03 August 2020
- Damaged roads can be observed in AOI2 as of 03 August 2020

### **Further/ anticipated actions from UNOSAT:**

- no impact detected/ discontinue monitoring over specific AOI
- potential impact detected       continue monitoring over specific AOIs
- full assessment to be conducted
- more data and/ or information needed to confirm impact

\* disclaimer (i.e. assessment yet to be validated with field-based information)