


04 December 2024

PRELIMINARY SATELLITE- DERIVED FLOOD IMPACT ASSESSMENT



Batticaloa District, Eastern Province, Sri Lanka

 Status: Floods observed

 Further action(s): Continue monitoring



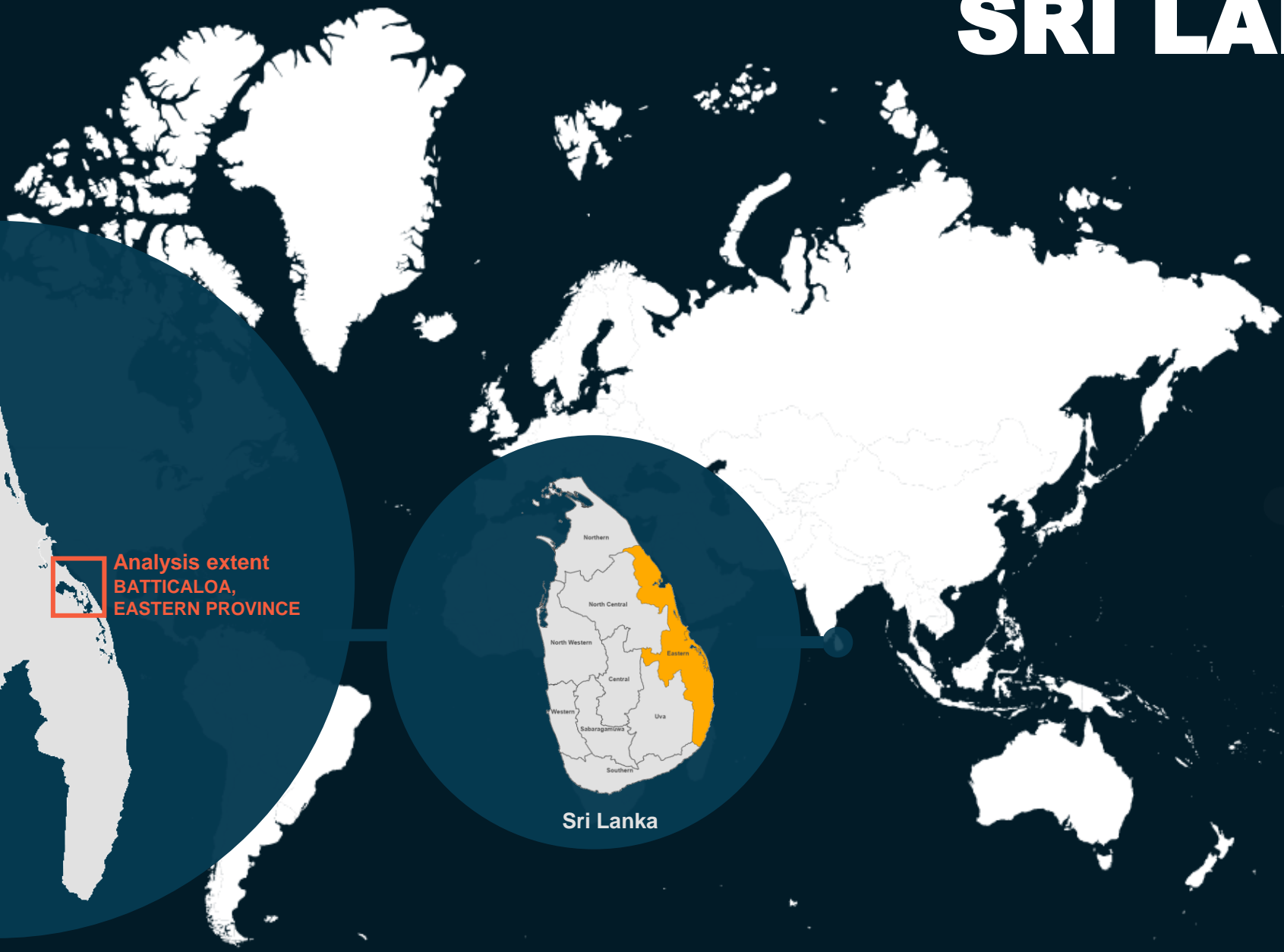
SRI LANKA

Eastern Province



Analysis extent
BATTICALOA,
EASTERN PROVINCE

Sri Lanka



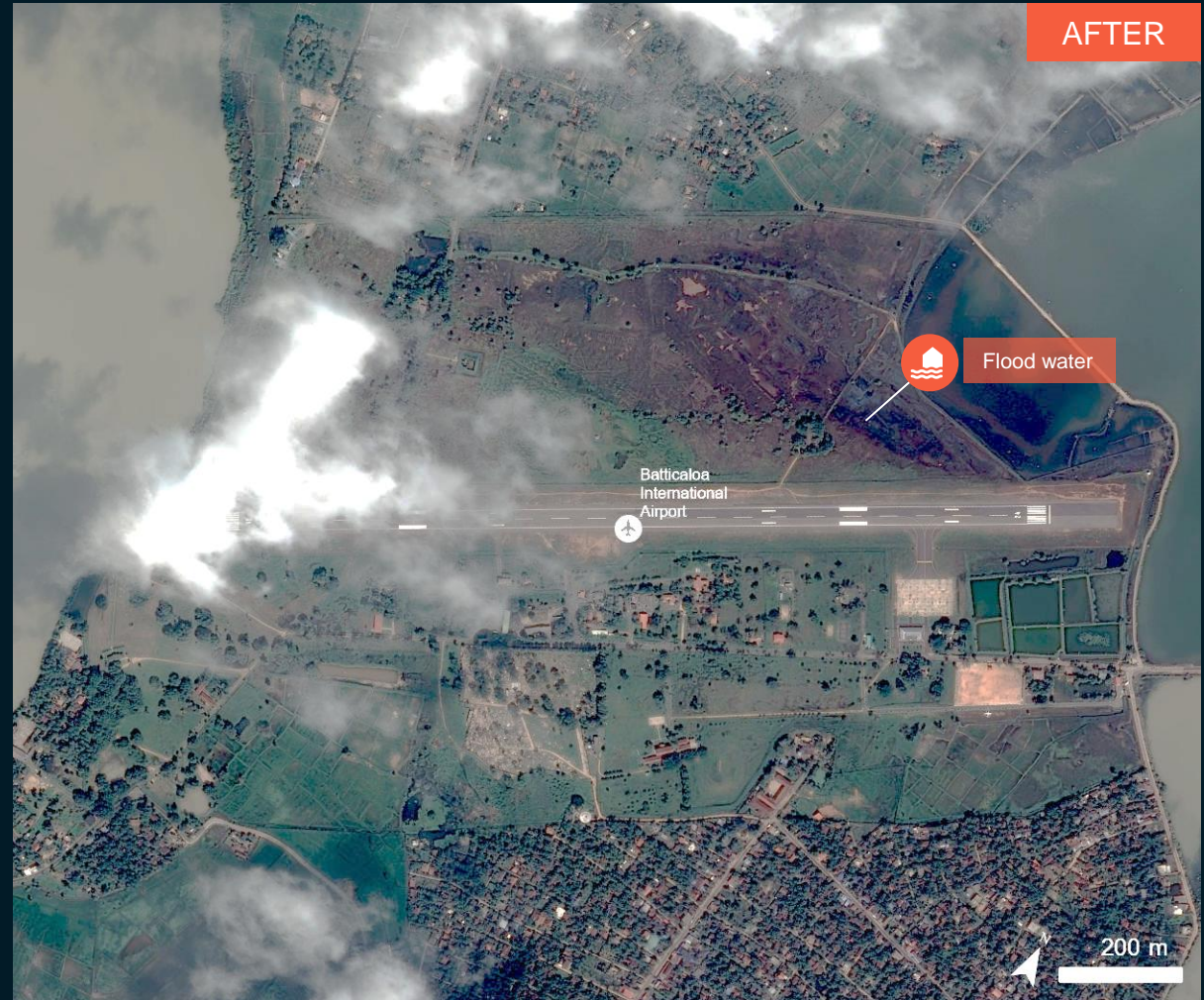
AOI 1 : MANMUNAI NORTH, BATTICALOA, EASTERN PROVINCE

Floodwater was observed near the runway.

Image center:
81°40'39"E
7°42'17"N



GeoEye-1 / 19 May 2023



Pléiades / 3 December 2024

AOI 2 : MANMUNAI NORTH, BATTICALOA, EASTERN PROVINCE

No major floodwater affected the railway station

Image center:
81°41'54"E
7°43'31"N



GeoEye-1 / 19 May 2023



Pléiades / 3 December 2024

AOI 3 : MANMUNAI NORTH, BATTICALOA, EASTERN PROVINCE

Inundated agricultural areas

Image center:
81°39'28"E
7°44'44"N



GeoEye-1 / 19 May 2023

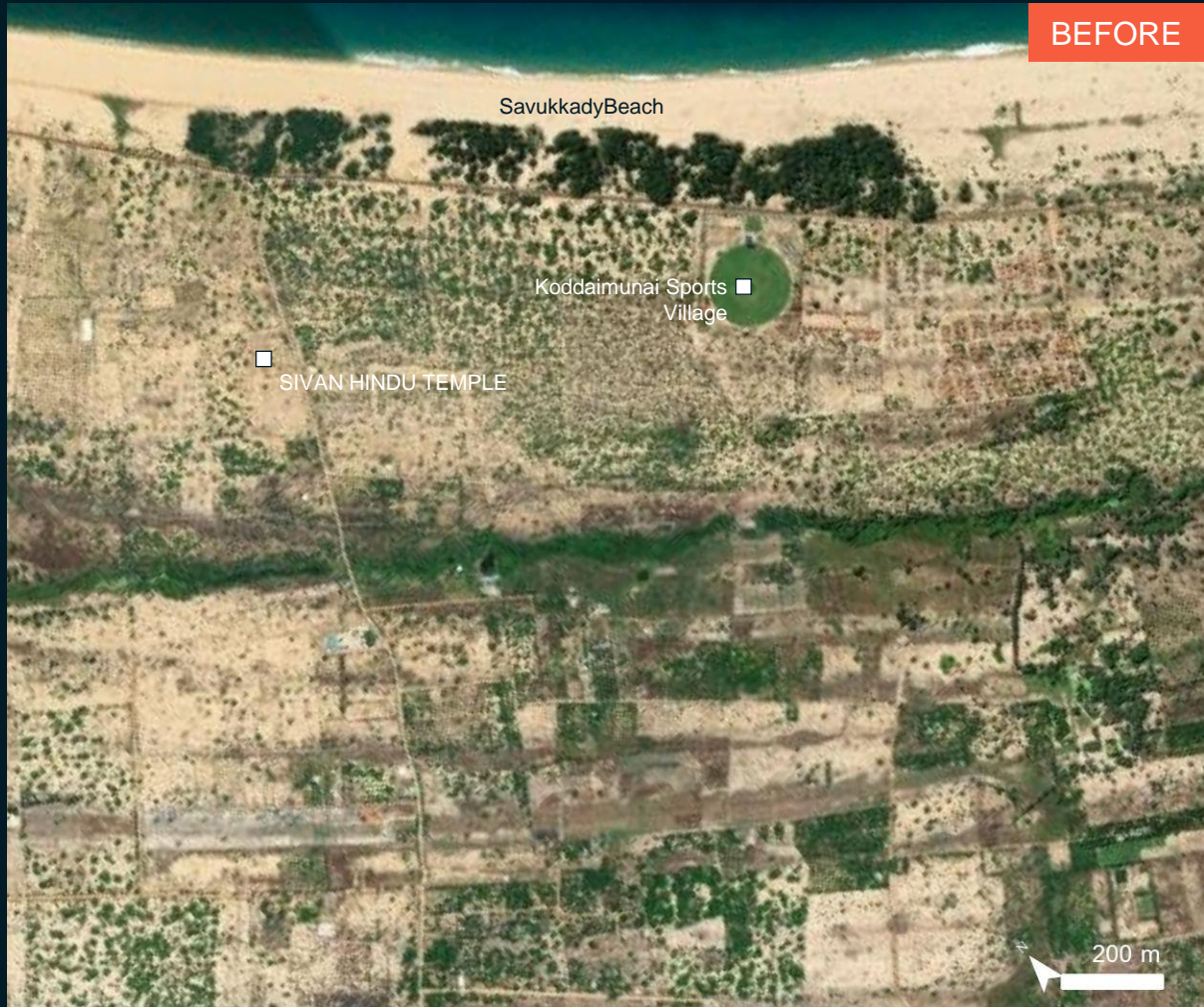


Pléiades / 3 December 2024

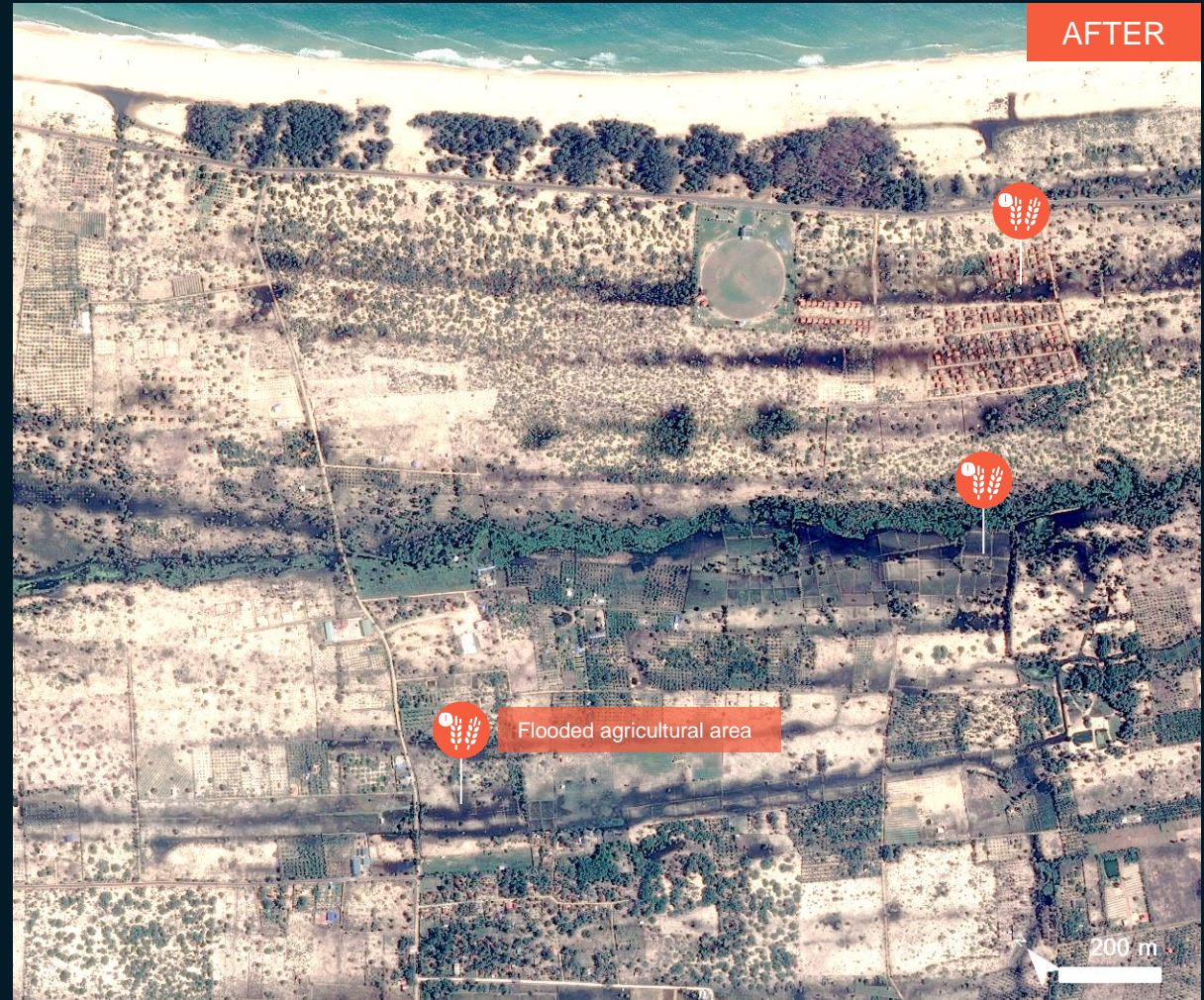
AOI 4 : MANMUNAI NORTH, BATTICALOA, EASTERN PROVINCE

Inundated agricultural areas along the shoreline

Image center:
81°38'47"E
7°46'24"N



GeoEye-1 / 19 May 2023



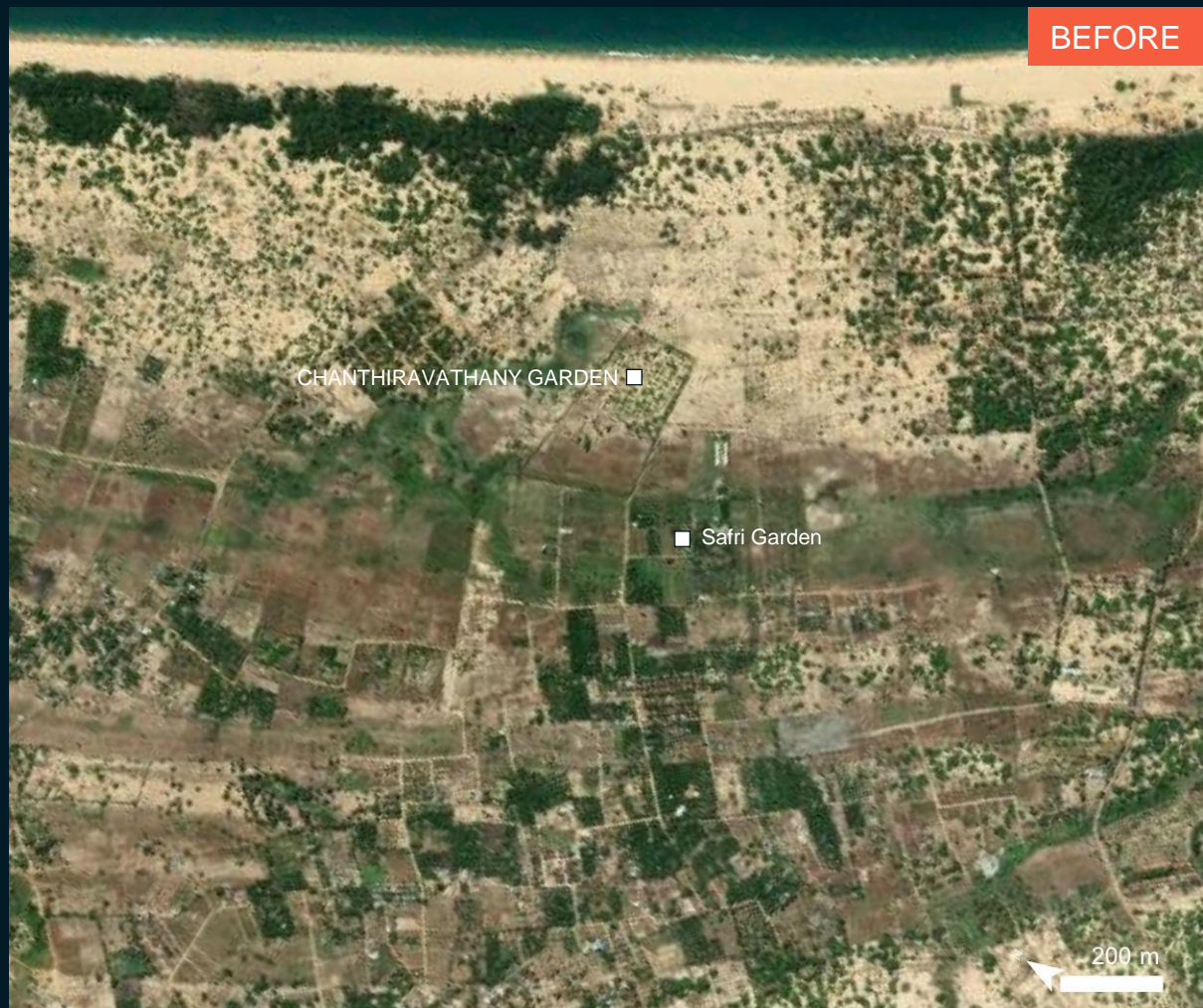
Pléiades / 3 December 2024

AOI 5 : ERAVUR PATTU, BATTICALOA, EASTERN PROVINCE

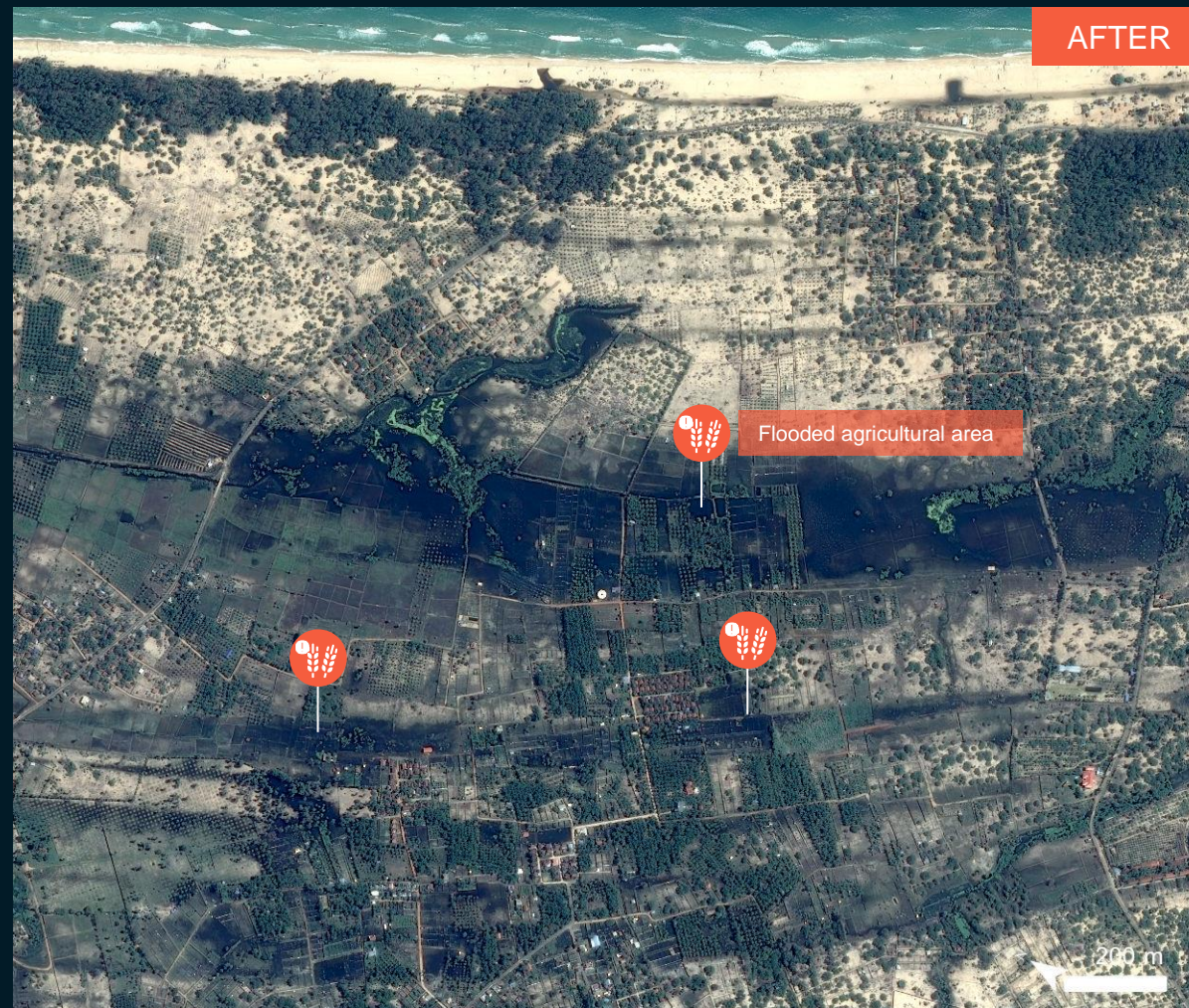
Inundated agricultural areas along the shoreline



Image center:
81°37'40"E
7°47'45"N



GeoEye-1 / 19 May 2023

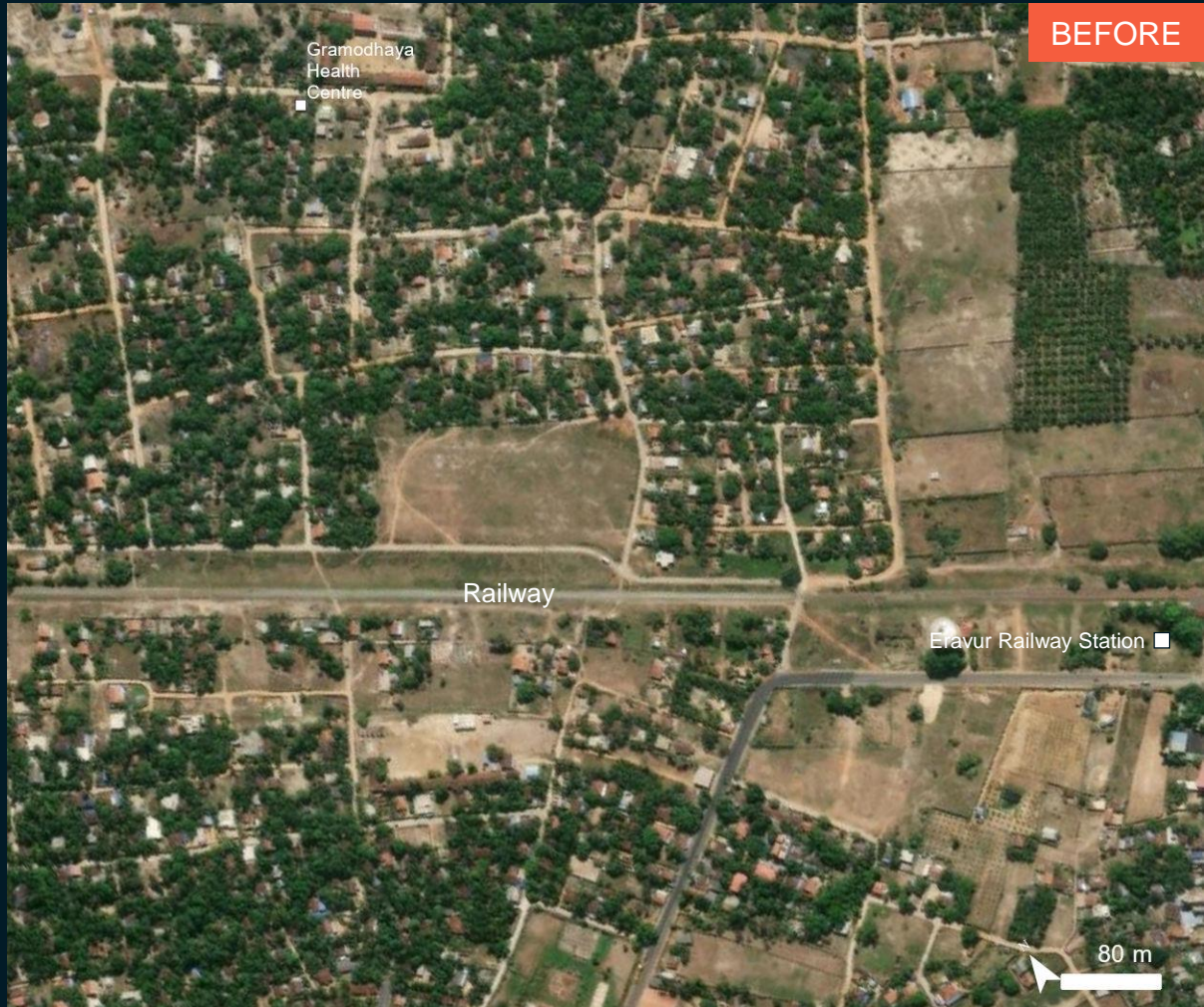


Pléiades / 3 December 2024

AOI 6 : ERAVUR PATTU, BATTICALOA, EASTERN PROVINCE

Floodwaters along the railway and in the agricultural area

Image center:
81°36'4"E
7°47'18"N



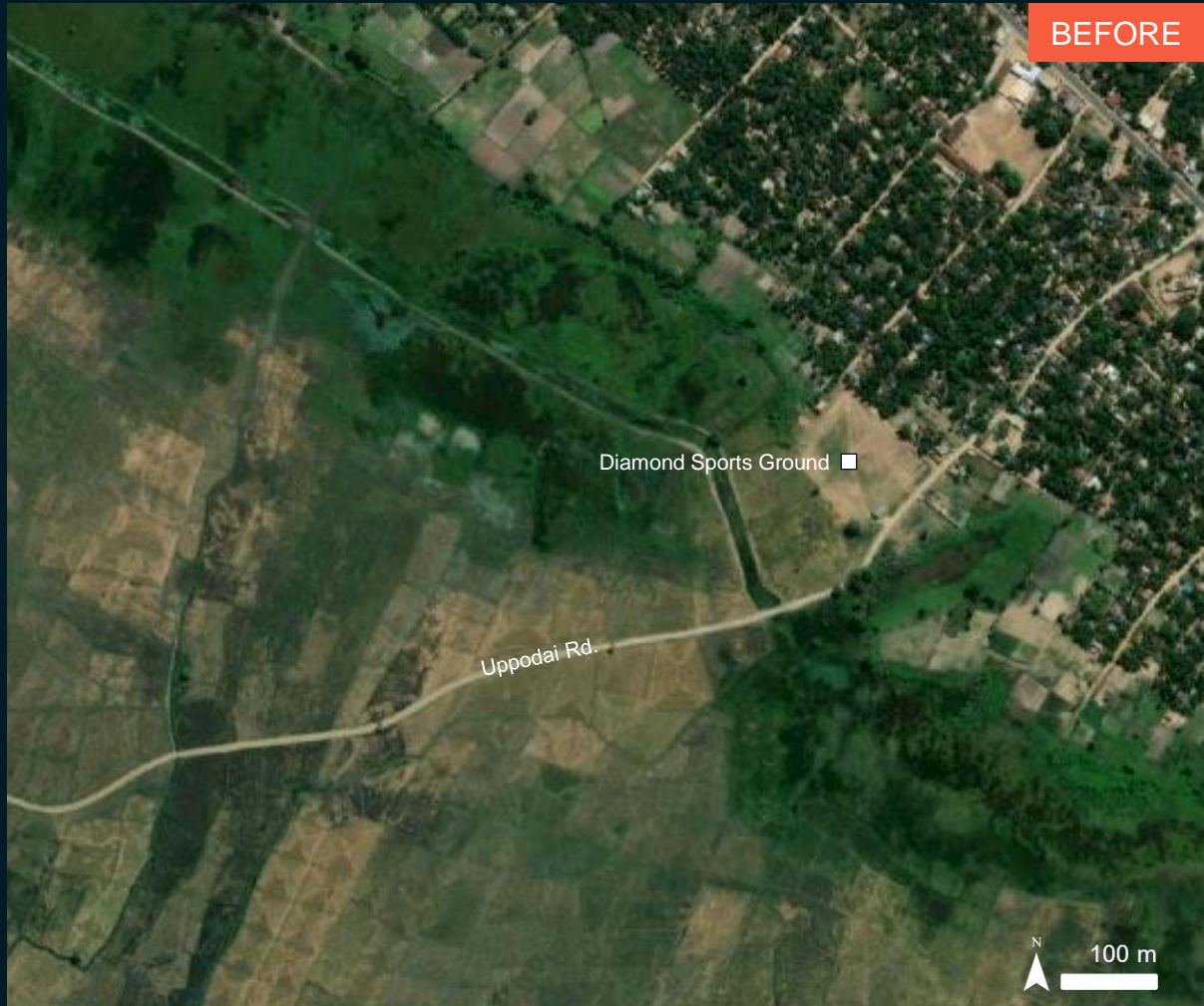
GeoEye-1 / 19 May 2023

Pléiades / 3 December 2024

AOI 7 : ERAVUR PATTU, BATTICALOA, EASTERN PROVINCE

Inundated agricultural areas

Image center:
81°34'2"E
7°47'58"N



GeoEye-1 / 19 May 2023



Pléiades / 3 December 2024

AOI 8 : ERAVUR TOWN, BATTICALOA, EASTERN PROVINCE

Inundated agricultural areas



Image center:
81°36'25"E
7°46'20"N



GeoEye-1 / 19 May 2023



Pléiades / 3 December 2024

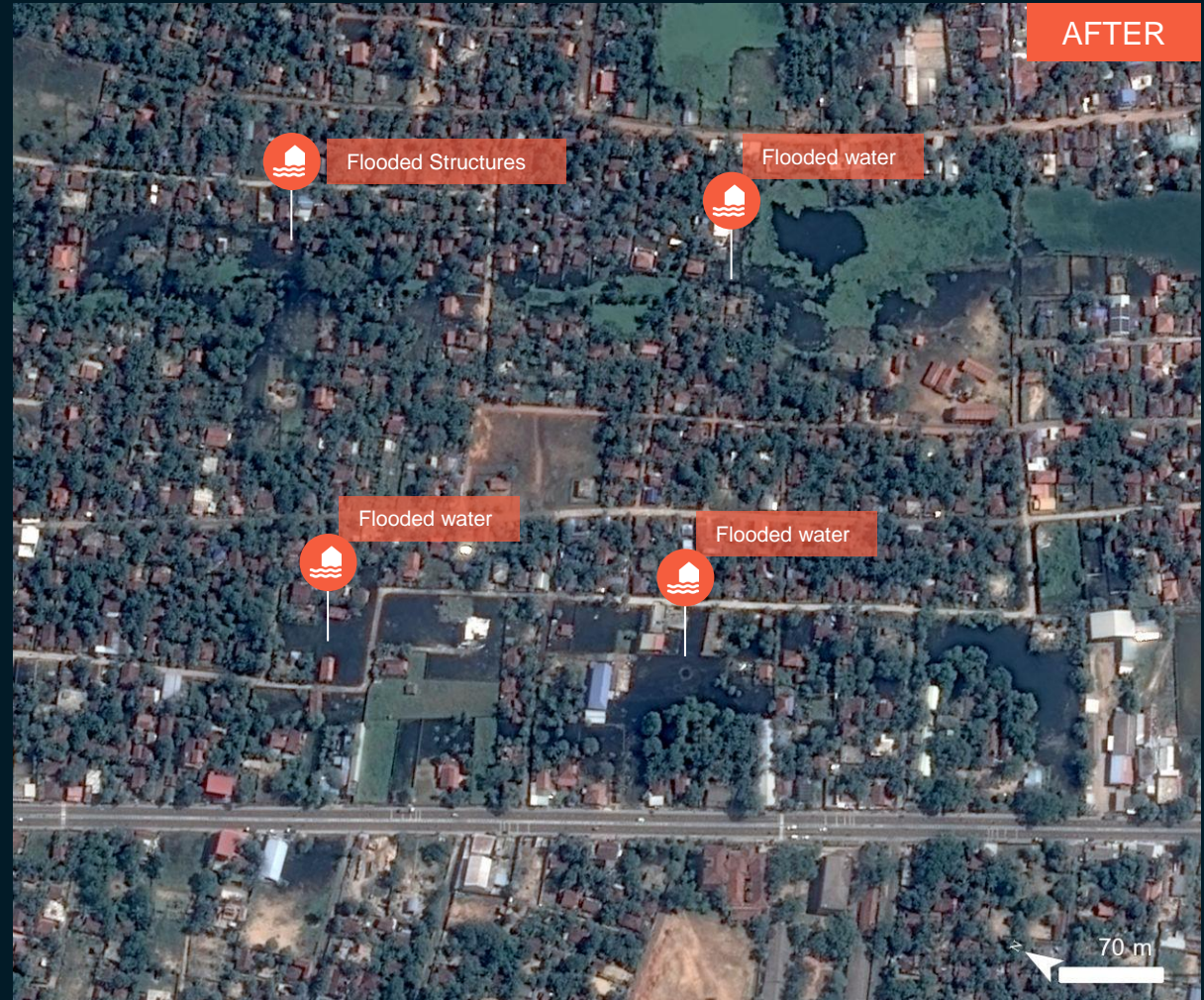
AOI 9 : MANMUNAI NORTH, BATTICALOA, EASTERN PROVINCE

Floodwater in urban area

Image center:
81°43'25"E
7°41'36"N



BEFORE



AFTER

GeoEye-1 / 19 May 2023

Pléiades / 3 December 2024

AOI 10 : KATTANKUDY, BATTICALOA, EASTERN PROVINCE

No major flood observed

Image center:
81°43'35"E
7°40'47"N



GeoEye-1 / 19 May 2023



Pléiades / 3 December 2024

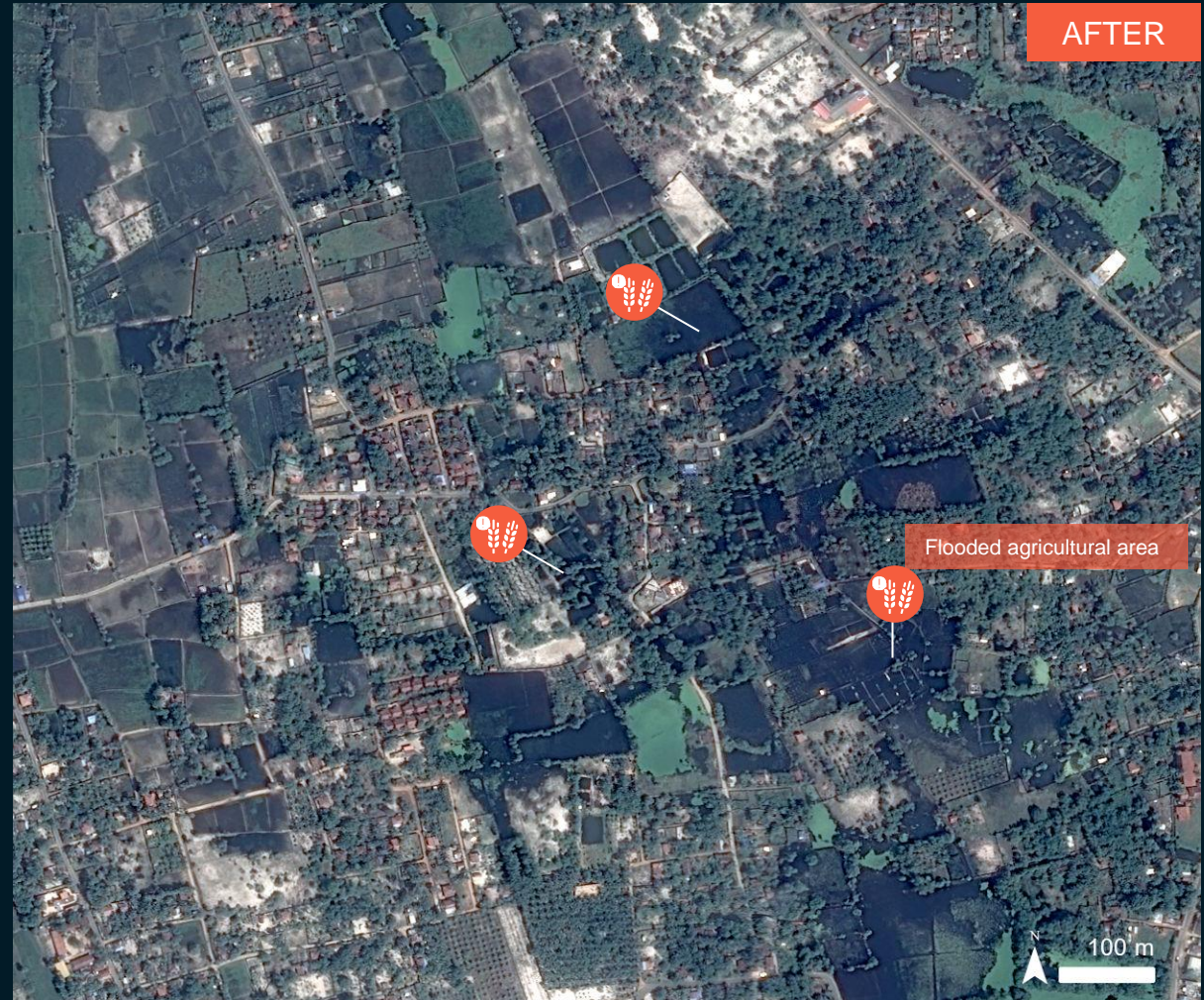
AOI 11 : MANMUNAI PATTU, BATTICALOA, EASTERN PROVINCE

Inundated agricultural areas

Image center:
81°44'4"E
7°39'18"N



GeoEye-1 / 19 May 2023



Pléiades / 3 December 2024

SUMMARY OF FINDINGS

MANMUNAI NORTH

- No major floodwater in Batticaloa International Airport and Batticaloa Railway Station has been observed as of 03 December 2024;
- Inundated agricultural areas has been observed along the lake and shoreline as of 03 December 2024;
- Flooded structures has been observed as of 03 December 2024.

ERAVUR PATTU

- Inundated agricultural areas has been observed along the shoreline as of 03 December 2024;
- Floodwaters has been observed along the railway as of 03 December 2024;
- Potentially affected railway has been observed as of 03 December 2024.

ERAVUR TOWN

- Minor flood extent has been observed as of 03 December 2024.

KATTANKUDY

- No major floodwater has been observed as of 03 December 2024.

MANMUNAI PATTU

- Inundated agricultural areas has been observed as of 03 December 2024.

COPYRIGHTS & SOURCES

Data sources:

(1) Satellite Imagery (Post) : Pléiades

Imagery Date: 03 December 2024

Resolution : 50 cm

Copyright: Includes Pléiades material © CNES (2024), Distribution Airbus D&S

Source: Airbus D&S

(2) Satellite Imagery (Pre) : GeoEye-1

Imagery Date: 19 May 2023

Resolution : 50 cm

Copyright: © 2023 Maxar

Source: ESRI Basemap

(3) Ancillary data

Administrative boundaries: Survey Department of Sri Lanka,
contributed by UNOCHA (ROAP) via HDX

Populated place: OpenStreetMap

Waterway: OpenStreetMap

Analysis: United Nations Satellite Centre (UNOSAT)

Production: United Nations Satellite Centre (UNOSAT)



@UNOSAT



@UNITAR.unosat



/UNOSAT



unitar

United Nations
Institute for Training and Research



UNOSAT
United Nations
Satellite Centre

UNOSAT, United Nations Institute for Training
and Research (UNITAR)
7 bis, Avenue de la Paix, CH-1202 Geneva 2,
Switzerland

T +41 22 917 4720
E unosat@unitar.org
www.unosat.org