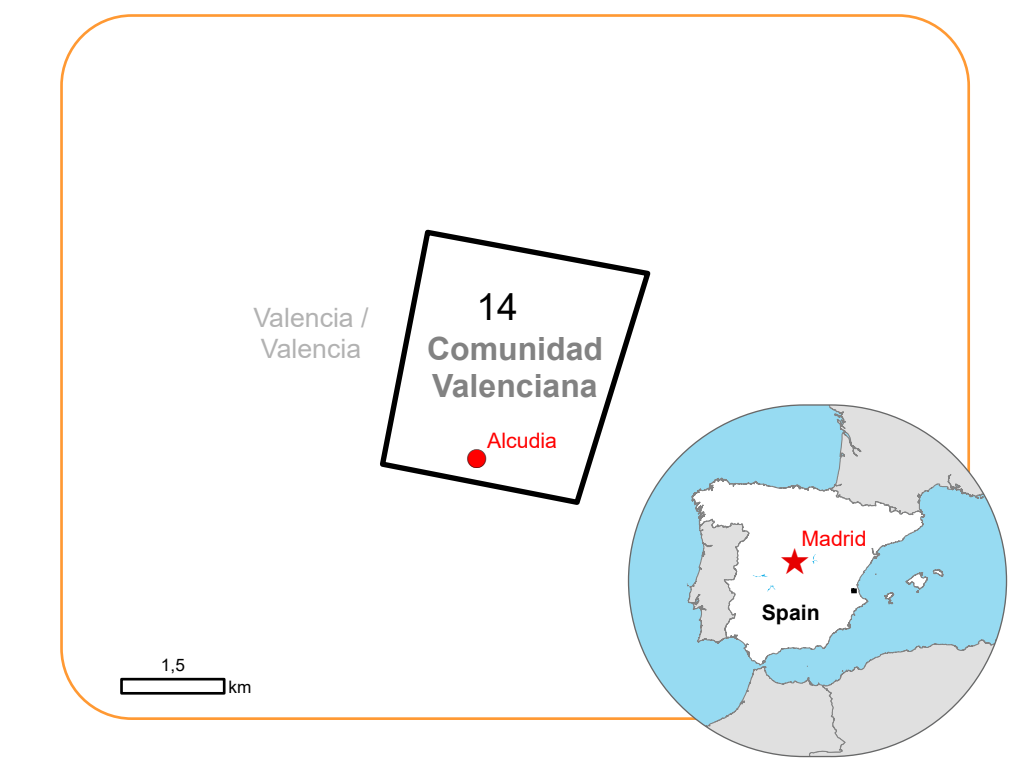


**EMSR773 - AO14**  
Flood in Spain  
ALCUDIA

**Situation as of 10/11/2024 10:39 UTC**  
Grading - Overview map 01



**Flooded area 0.7 ha**  
**Flood trace 79.7 ha**  
**Potentially affected population ~1,500**

**Affected Built-up and Transportations**

**Built-Up 378 No.**  
**Railway 0.1 km**  
**Road 24.2 km**

- Crisis Information**
  - Flooded Area
  - Flood trace
- Built Up Grading**
  - Damaged
  - Possibly damaged
- Facilities Grading**
  - Damaged
  - Possibly damaged
- Transportation Grading**
  - Road, Destroyed
  - Road, Possibly damaged
  - Bridge, elevated highway, tunnel and subway, Possibly damaged
  - Highway, No visible damage
- Main road, No visible damage**
- Local road, No visible damage**
- Track, No visible**
- Subway, No visible damage**
- General Information**
  - Area of Interest
  - Not Analysed
- Administrative Boundaries**
  - Municipality
- Placenames**
  - Placename
- Hydrography**
  - Lake, River

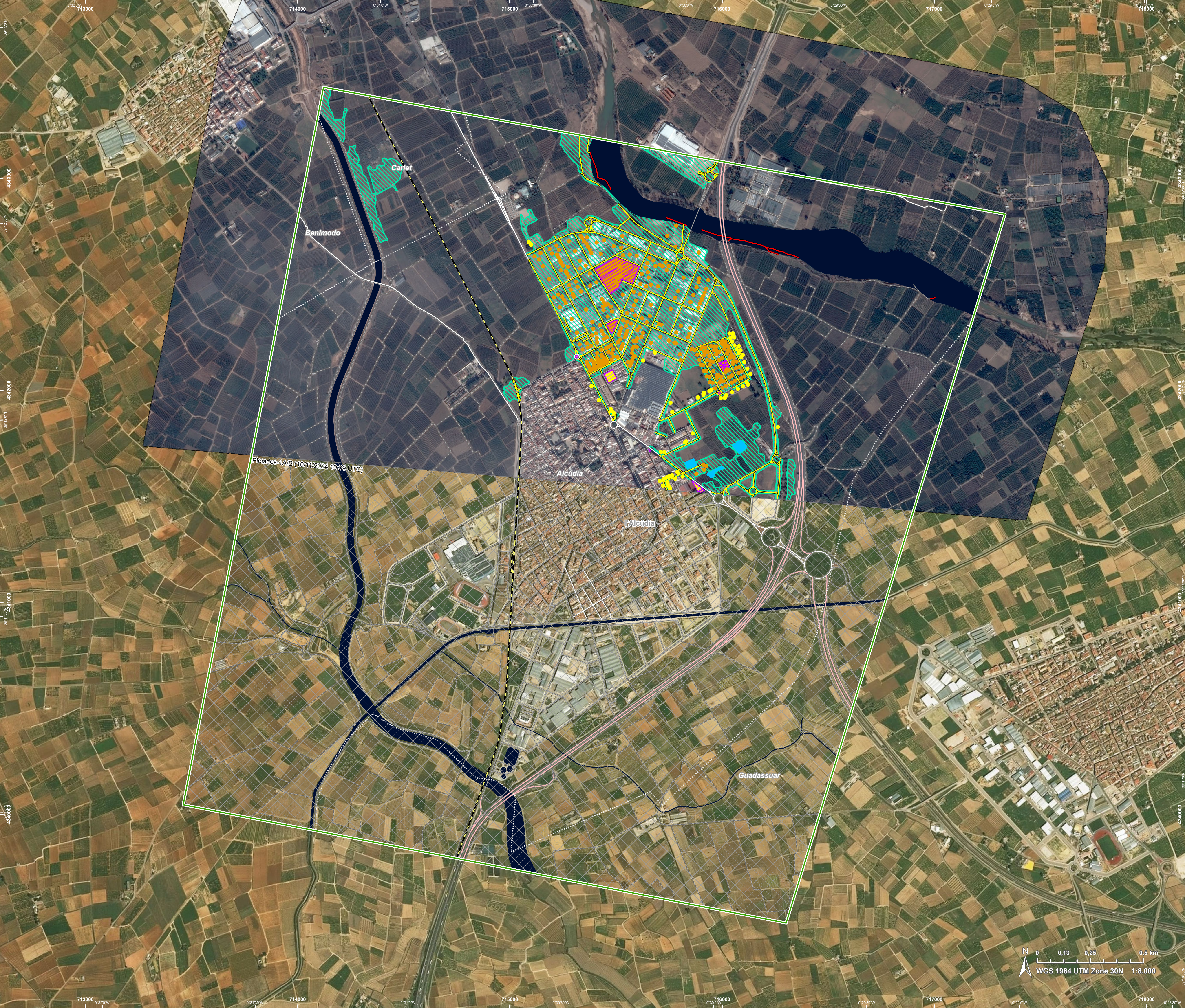
**Event:** On 29 October 2024 at 14:30 UTC, an extraordinary rainfall event affected the Valencia region. High water levels in rivers caused flooding in Ribera Alta, Horta, La Plana de Utiel and Letur river. On 31 October 2024, extraordinary precipitation caused flooding in the Castellon Province area. Copernicus EMS Rapid Mapping is requested to provide emergency mapping of flood extent, Monitoring and classification damages emergency mapping.

**Data sources and analysis:** Pre-event image: WorldView-2 © Maxar Technologies, Inc. (2024), (acquired on 15/03/2024 at 10:38 UTC, resolution 0.5 m).  
Post-event image: Pléiades-1A/B © CNES (2024), distributed by Airbus DS (acquired on 10/11/2024 at 10:39 UTC, resolution 0.5 m).  
This image is used as background image.  
All images are provided under COPERNICUS by the European Union and ESA, all rights reserved.

The thematic layer has been derived from post-event satellite image by means of visual interpretation.

Map produced by e-GEOS released by e-GEOS on the 11/11/2024.

Details on this activation and service conditions available through the QR code or at the link: <https://rapidmapping.emergency.copernicus.eu/EMSR773>





Consequences within the AOI							
	Unit of measurement	Destroyed	Damaged	Possibly damaged*	Total affected**	Total in AOI	
Flood trace	ha					79,7	
Flooded area	ha					0,7	
Estimated population	Number of inhabitants				~ 1.500	~ 10.000	
Built-up	Residential Buildings	No.	0	82	39	121	2.522
	Office buildings	No.	0	4	2	6	29
	Wholesale and retail trade buildings	No.	0	10	2	12	58
	Industrial buildings	No.	0	170	4	174	385
	School, university and research buildings	No.	0	0	0	0	8
	Non-residential farm buildings	No.	0	3	2	5	36
	Buildings used as places of worship and for religious activities	No.	0	0	0	0	3
	Historic or protected monuments	No.	0	0	0	0	1
	Hotel buildings	No.	0	0	0	0	2
	Communication buildings, stations, terminals and associated buildings	No.	0	0	0	0	2
	Unclassified	No.	0	44	16	60	254
Transportation	Highways	km	0	0	0,1	0,1	11,8
	Primary Road	km	0	0	1,2	1,2	7,6
	Local Road	km	0	0	13,9	13,9	56,9
	Cart Track	km	0,9	0	1,4	2,3	66,9
	No Driveway	km	1,3	0	5,5	6,8	6,8
	Subway	km	0	0	0,1	0,1	4,1
Facilities	Settling Basin	ha	0	0	0	0	1,7
	Sport and recreation constructions	ha	0	2,6	0,3	2,9	16,2
	Long-distance pipelines, communication and electricity lines	km	0	0	0	0	7,5
	Dams	km	0	0	0	0	0,1
Land use	Other	ha				62,9	290,1
	Heterogeneous agricultural areas	ha				9,9	33,6
	Permanent crops	ha				4,9	709,5
	Shrub and/or herbaceous vegetation association	ha				2,6	33,2

\* Presence of damage proxies and proximity with destroyed/damaged asset  
 \*\* Sum of all damage classes

**Disclaimer:**

Full disclaimer and other helpful information available in the online manual:  
<https://emergency.copernicus.eu/mapping/ems/online-manual-rapid-mapping-products>  
 © European Union / Copernicus Emergency Management Service

**Data Access:**

All data displayed on the map(s), as well as the Physiography and Land Use - Land Cover layers, are available in the Crisis Information Package and the Base Layer Package (for reference data). The table above is available in editable format in the Crisis Information Package. All products and data are also available for download on the portal.

**Estimated Population:**

Estimated population is based on Copernicus Global Human Settlement Layer (GHSL) dataset. Additional population datasets and analysis are available in the summary table.

**Data Sources:**

Base Vector Layers: OpenStreetMap © OpenStreetMap contributors (2024), Wikimapia.org, GeoNames 2015, Corine Land Cover (CLC) 2018, EuroBoundaryMap 2017 ©EuroGeographics.  
 Inset Maps: JRC 2013, GISCO 2010 © EuroGeographics, Natural Earth 2012, CCM River DB © EUJRC2007, GeoNames 2015.  
 Digital Elevation Model: Spain National DTM 2m (2015)

Access to the portal

