



مركز محمد بن راشد
للفضاء
MOHAMMED BIN RASHID SPACE CENTRE

PRELIMINARY SATELLITE-DERIVED FLOOD DAMAGE ASSESSMENT

Flood impact assessment in Valencia,

SPAIN



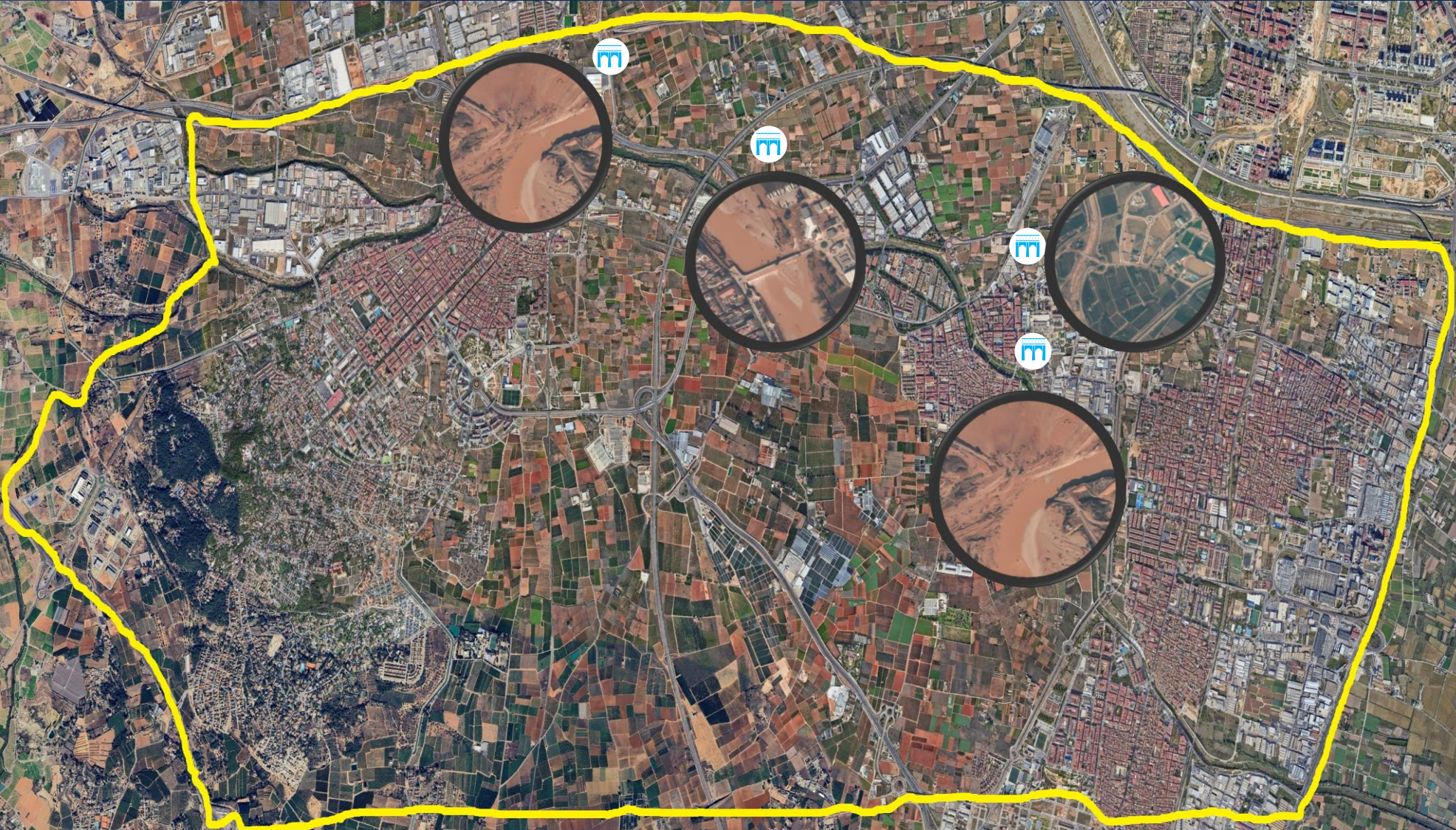
08 November 2024

Satellite Imagery Source: 2024 Maxar Technologies Provided by European Space Imaging

CENTRAL EASTERN SPAIN PROVINCE OF VALENCIA



مركز محمد بن راشد
للفضاء
MOHAMMED BIN RASHID SPACE CENTRE




217
Number of deaths

89
Missing people

400
Displaced people

(Source: Reuters06th
November 2024)

 Flood affected area

 Bridges Destroyed

Destroyed Bridges & Buildings

Image center

0°25'10.20"W
39°25'54.84"N



مركز محمد بن راشد
للفضاء
MOHAMMED BIN RASHID SPACE CENTRE



Before



After

Maxar : August 11th 2022

Pre event: Maxar's imagery

Maxar : October 31st 2024

Post event: Maxar's imagery

Ancillary Data

Administrative boundaries: <https://www.diva-gis.org/gdata>

Disclaimer

Accuracy of the product is not validated by ground truth data



Satellite Imagery © 2024 Maxar Technologies Provided by European Space Imaging

Destroyed Bridges & Buildings

Image center

0°26'38.39"W
39°26'20.03"N



مركز محمد بن راشد
للفضاء
MOHAMMED BIN RASHID SPACE CENTRE



Before



After

Maxar : August 11th 2022

Pre event: Maxar's imagery

Maxar : October 31st 2024

Post event: Maxar's imagery

Ancillary Data

Administrative boundaries: <https://www.diva-gis.org/gdata>

Disclaimer

Accuracy of the product is not validated by ground truth data



Satellite Imagery © 2024 Maxar Technologies Provided by European Space Imaging

Destroyed Bridges & Roads

Image center

0°27'28.16"W
39°26'39.20"N



مركز محمد بن راشد
للفضاء
MOHAMMED BIN RASHID SPACE CENTRE



Before



After

Maxar : August 11th 2022

Pre event: Maxar's imagery

Maxar : October 31st 2024

Post event: Maxar's imagery

Ancillary Data

Administrative boundaries: <https://www.diva-gis.org/gdata>

Disclaimer

Accuracy of the product is not validated by ground truth data



Satellite Imagery © 2024 Maxar Technologies Provided by European Space Imaging

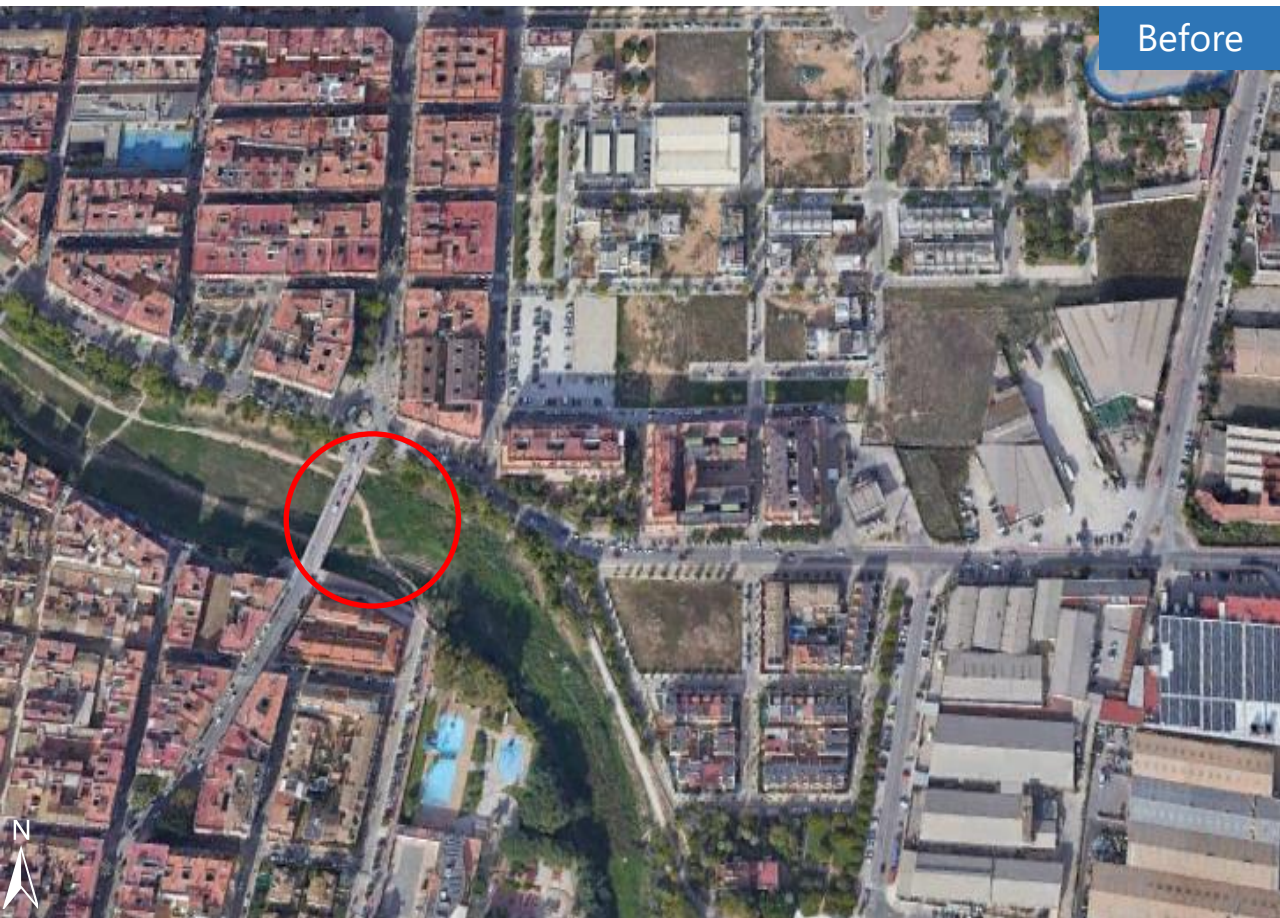
Destroyed Bridges & Buildings

Image center

0°24'48.85"W
39°25'36.42"N



مركز محمد بن راشد
للفضاء
MOHAMMED BIN RASHID SPACE CENTRE



Before



After

Maxar : August 11th 2022

Pre event: Maxar's imagery

Maxar : October 31st 2024

Post event: Maxar's imagery

Ancillary Data

Administrative boundaries: <https://www.diva-gis.org/gdata>

Disclaimer

Accuracy of the product is not validated by ground truth data



Satellite Imagery © 2024 Maxar Technologies Provided by European Space Imaging