



12 September 2024

PRELIMINARY SATELLITE-DERIVED FLOOD IMPACT ASSESSMENT



Brahmanbaria City, Brahmanbaria District, Chattogram Division and Habiganj City, Habiganj District, Sylhet Division - Bangladesh

 Status: Inundated structures and cropland observed


 Further action(s): Continue monitoring

Bangladesh



AOI-1 Habiganj City,
Habiganj District,

AOI-2 Brahmanbaria City,
Brahmanbaria District

 Area of interest



HABIGANJ CITY, HABIGANJ DISTRICT, SYLHET DIVISION

Inundated structures and cropland observed



Habiganj

-  Inundated agricultural area
-  Inundated urban area
-  Inundated road

Pleiades image acquired on 30 August 2024 at 05:02 UTC
Image center: 91°24'45"E 24°23'33"N



AOI1- HABIGANJ CITY, HABIGANJ DISTRICT, SYLHET DIVISION

Receded flood water

Image center:
91°23'59"E
24°22'42"N



Pleiades / 30 August 2024

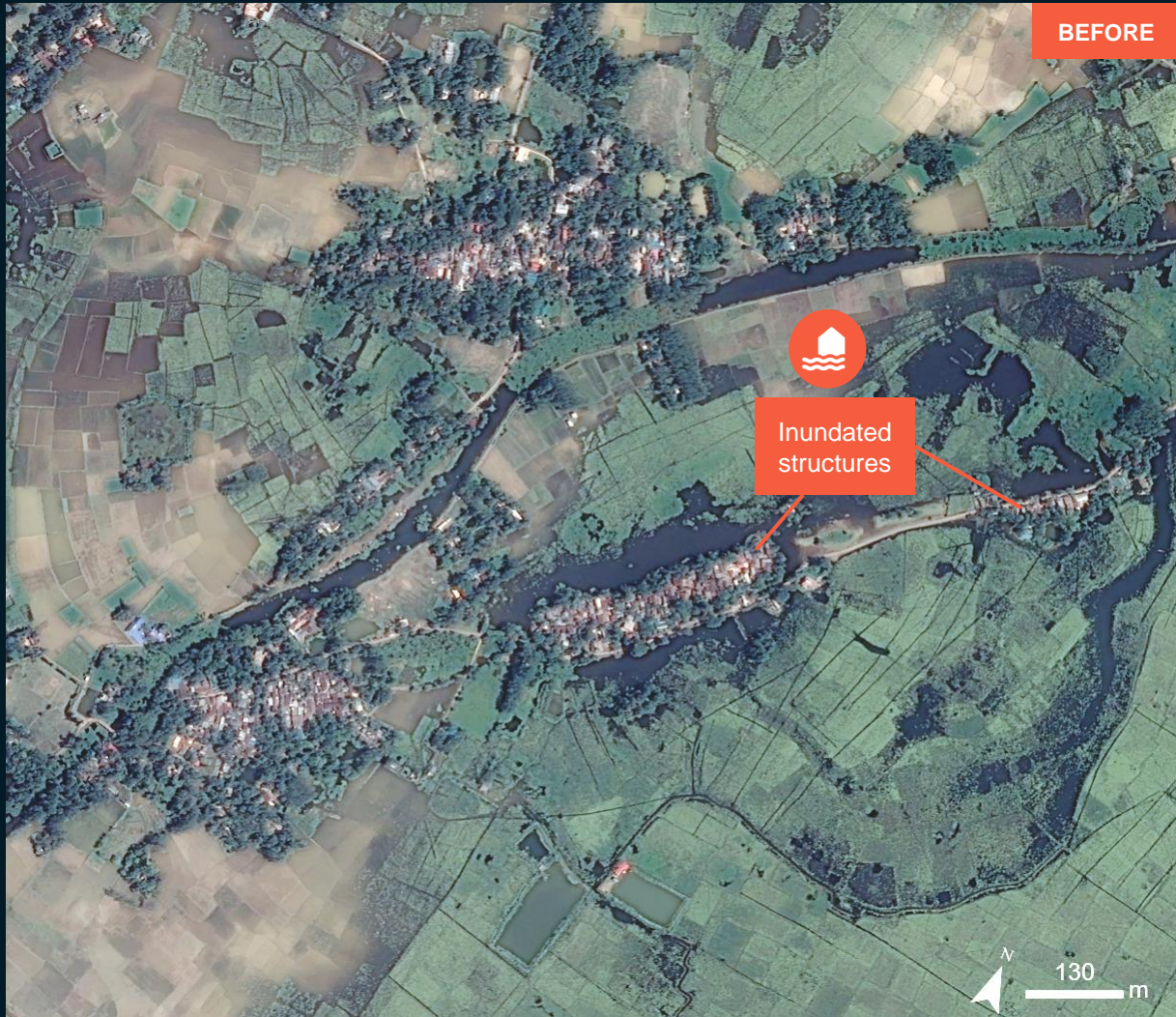


WorldView-2 / 10 September 2024

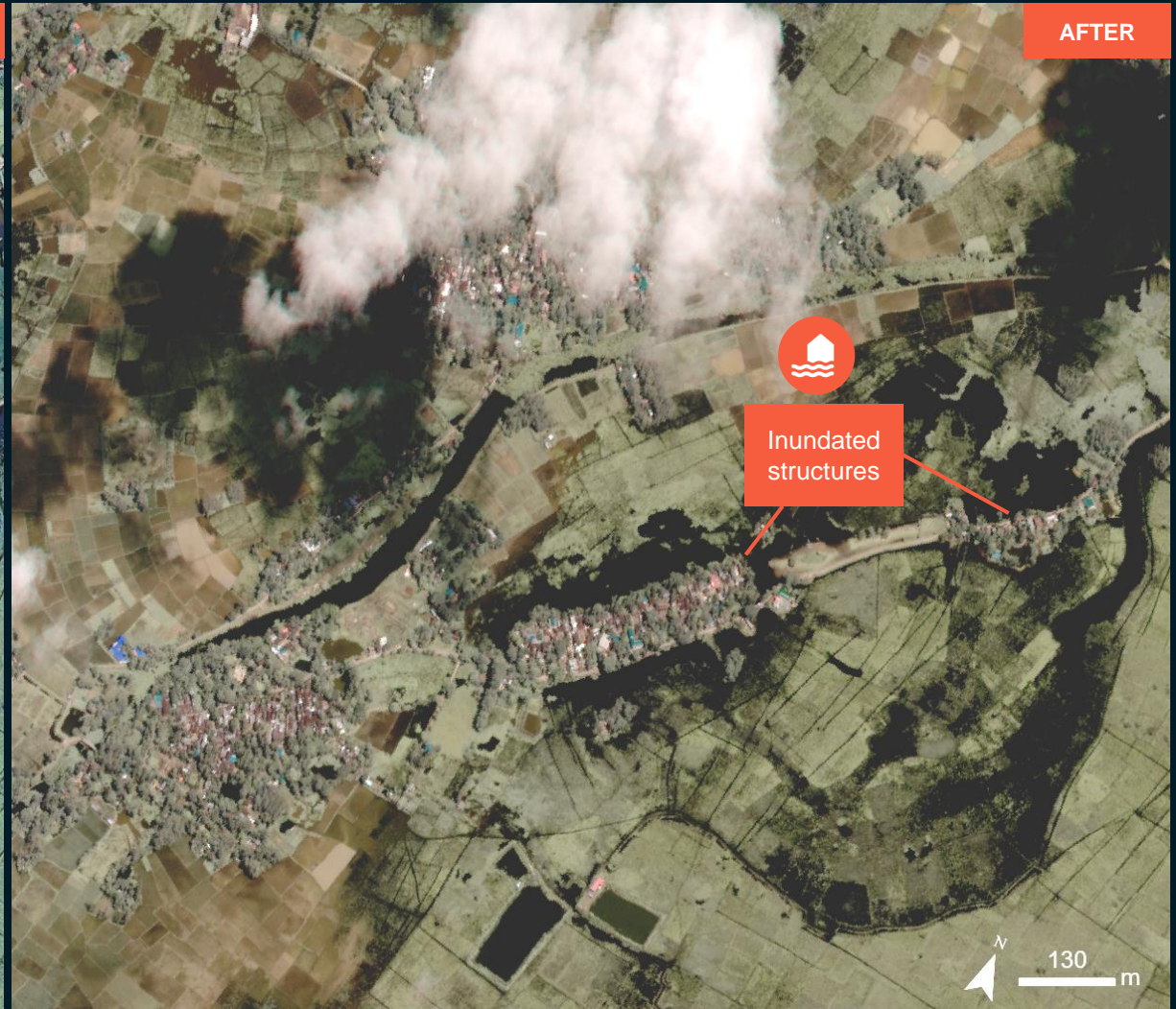
AOI2- HABIGANJ CITY, HABIGANJ DISTRICT, SYLHET DIVISION

Receded flood water

Image center:
91°25'51"E
24°24'5"N



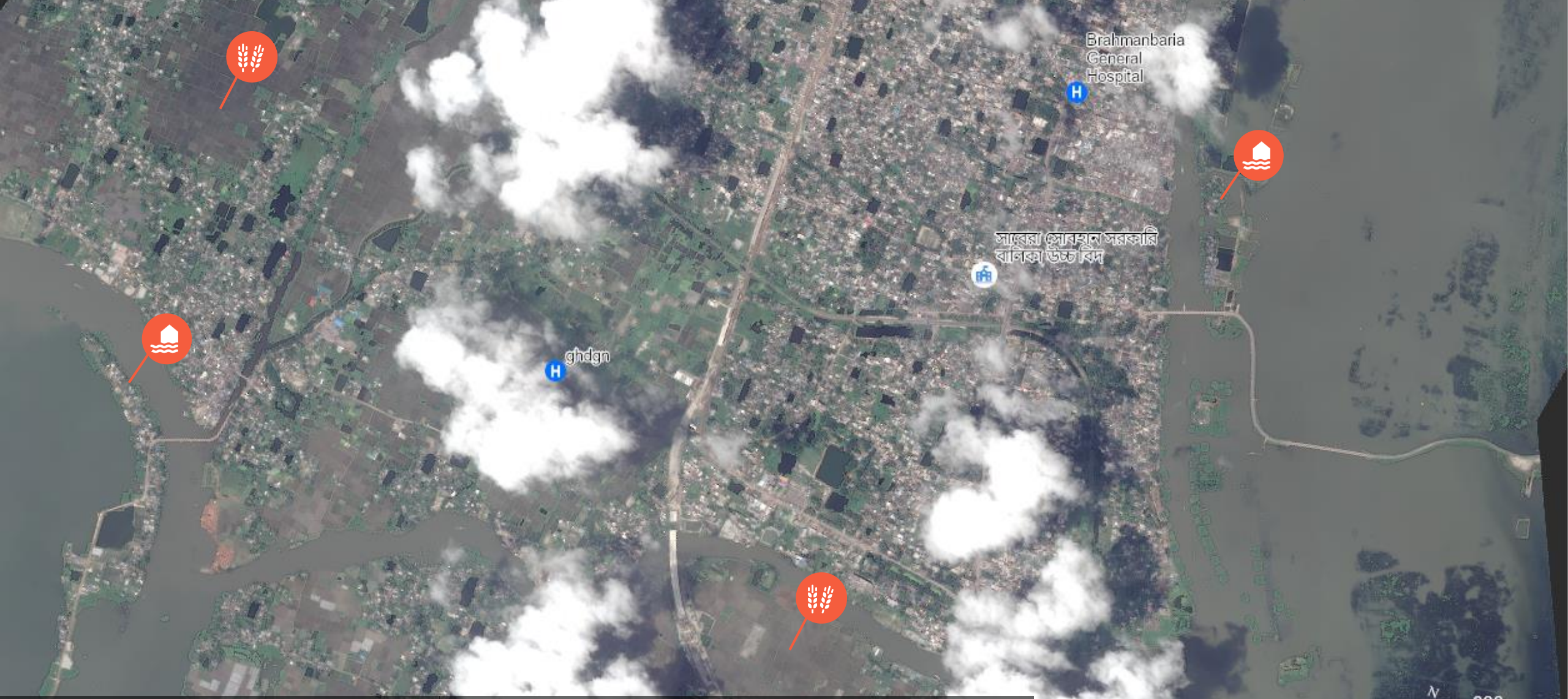
Pleiades / 30 August 2024



WorldView-2 / 10 September 2024

BRAHMANBARIA CITY, BRAHMANBARIA DISTRICT, CHATTOGRAM DIVISION

Inundated structures and cropland observed



Pleiades image acquired on 4 September 2024 at 04:23 UTC
Image center: 91°6'4"E 23°57'51"N

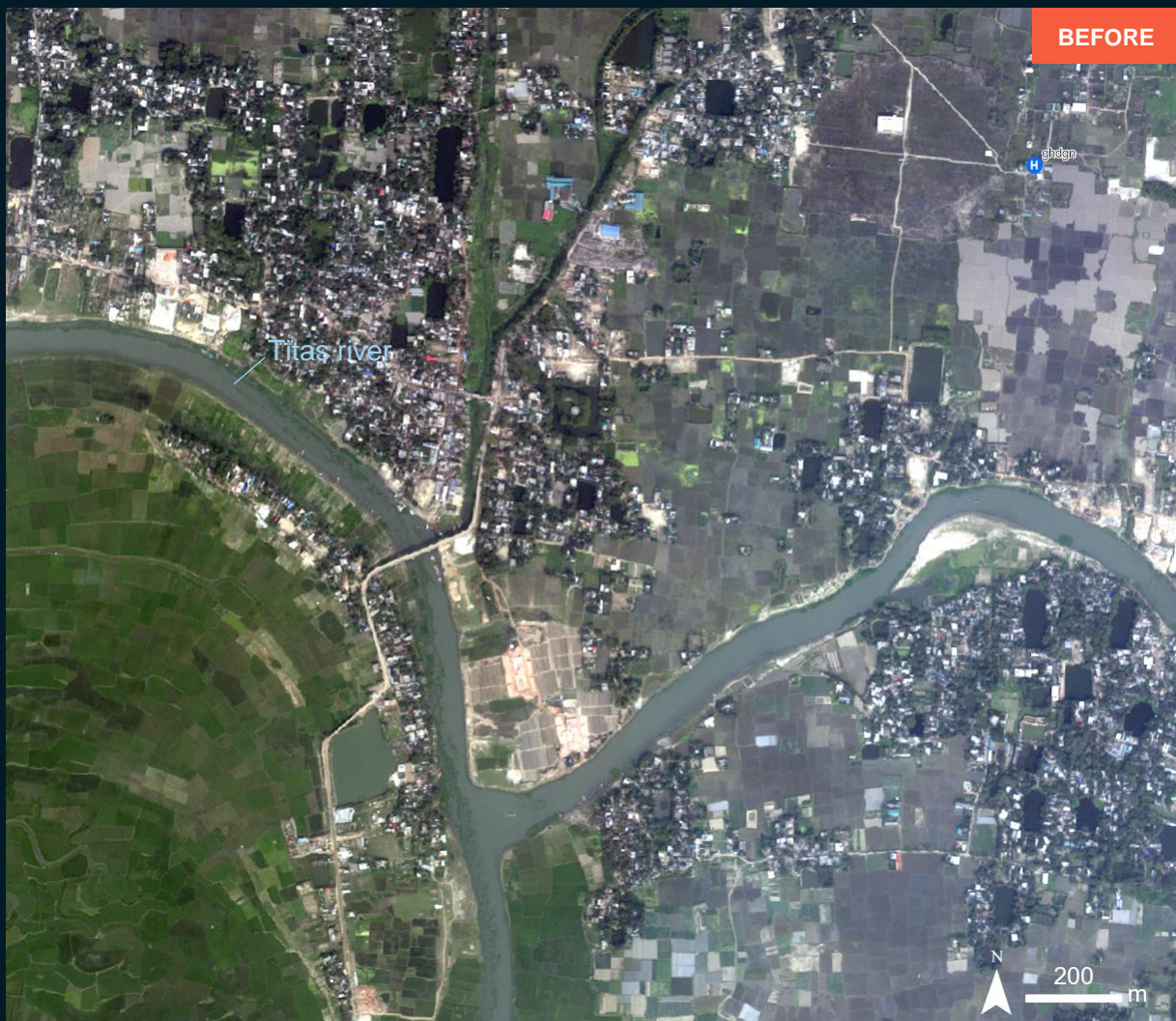
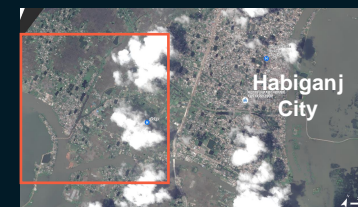
- Inundated agricultural area
- Inundated urban area
- Inundated road



AOI2-1 BRAHMANBARIA CITY, BRAHMANBARIA DISTRICT, CHATTOGRAM DIVISION

Inundated structures and cropland observed

Image center:
91°5'13"E
23°57'11"N



WorldView-2 / 05 February 2024

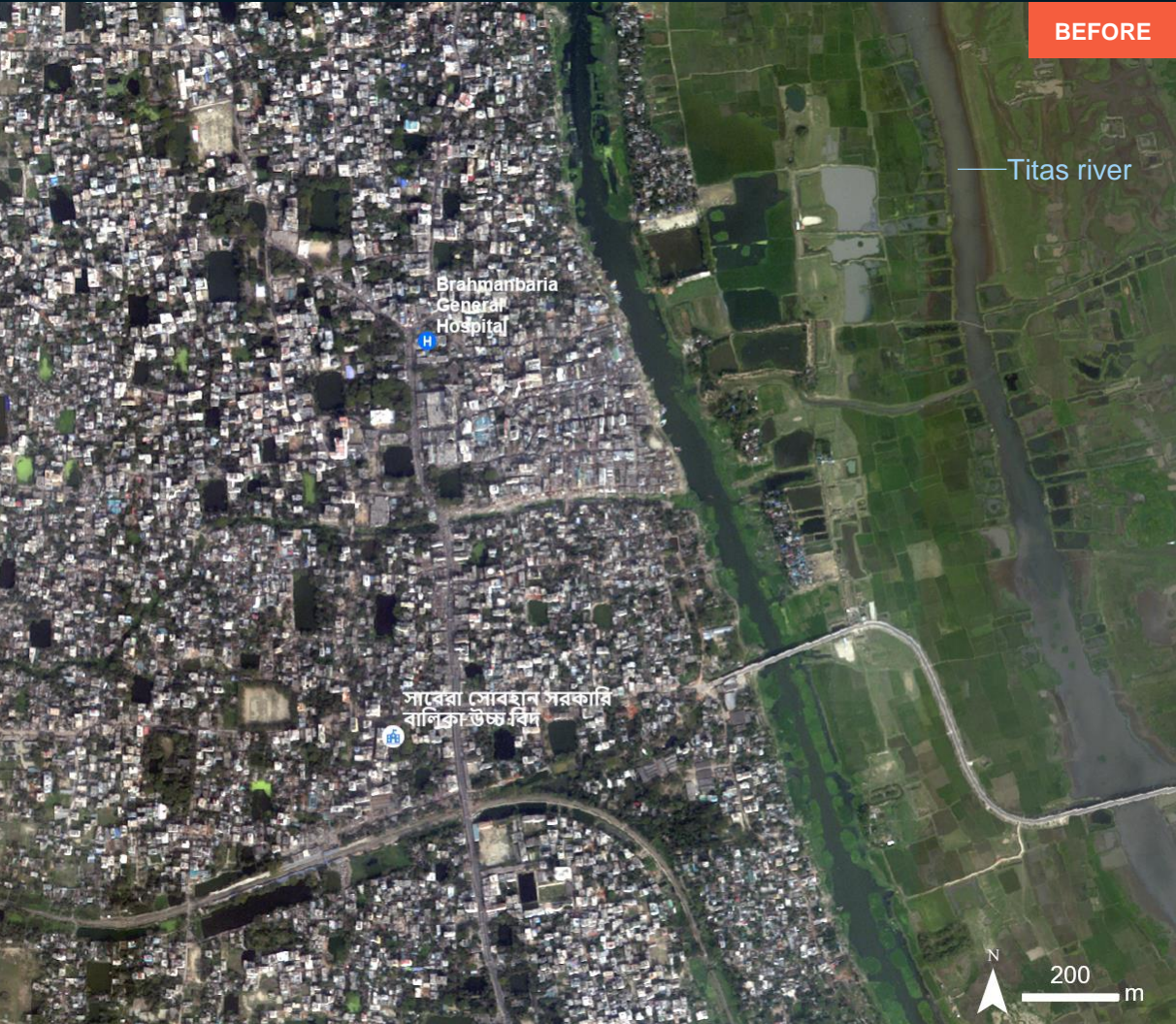
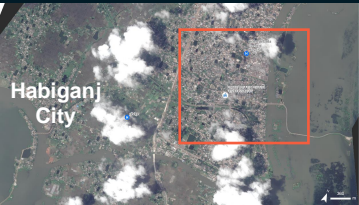


Pleiades / 4 September 2024

AOI2-2 BRAHMANBARIA CITY, BRAHMANBARIA DISTRICT, CHATTOGRAM DIVISION

Inundated structures and cropland observed

Image center:
91°6'50"E
23°58'24"N



WorldView-2 / 05 February 2024

Pleiades / 4 September 2024

SUMMARY OF FINDINGS

- Inundated structures observed in Habiganj City, Habiganj District, Sylhet Division as of 10 September 2024;
- Inundated cropland observed in Habiganj City, Habiganj District, Sylhet Division as of 10 September 2024;
- Receded floodwaters were observed in Habiganj City, Habiganj District, Sylhet Division as of 10 September 2024, compared to imagery from 30 August 2024.
- Inundated cropland observed in Brahmanbaria City, Brahmanbaria District, Chattogram Division as of 4 September 2024;
- Inundated structures observed in Brahmanbaria City, Brahmanbaria District, Chattogram Division as of 4 September 2024;

COPYRIGHTS & SOURCES

Data sources:

(1) Post image

Satellite Data: Pleiades

Imagery Dates: 30 August and 04 September 2024

Resolution : 50cm

Copyright : Includes Pleiades material © CNES (2022), Distribution Airbus D&S

Source : Airbus D&S

(2) Post image

Satellite Data: WorldView-2

Imagery Dates: 10 September 2024

Resolution : 50cm

Copyright: © 2024 Maxar

(3) Pre-image

Satellite Data: WorldView-2

Imagery Dates: 05 February 2024

Resolution : 50cm

Copyright: © 2024 Maxar

(4) Ancillary data

Boundary data: Bangladesh Bureau of Statistics (BBS)

Populated place: OpenStreetMap

Waterways: OpenStreetMap

Analysis: United Nations Satellite Centre (UNOSAT)

Production: United Nations Satellite Centre (UNOSAT)

 **@UNOSAT**

 **@UNITAR.unosat**

 **/UNOSAT**



UNOSAT, United Nations Institute for Training
and Research (UNITAR)
7 bis, Avenue de la Paix, CH-1202 Geneva 2,
Switzerland

T +41 22 917 4720
E unosat@unitar.org
www.unosat.org