



3 September 2024

# PRELIMINARY SATELLITE-DERIVED FLOOD IMPACT ASSESSMENT

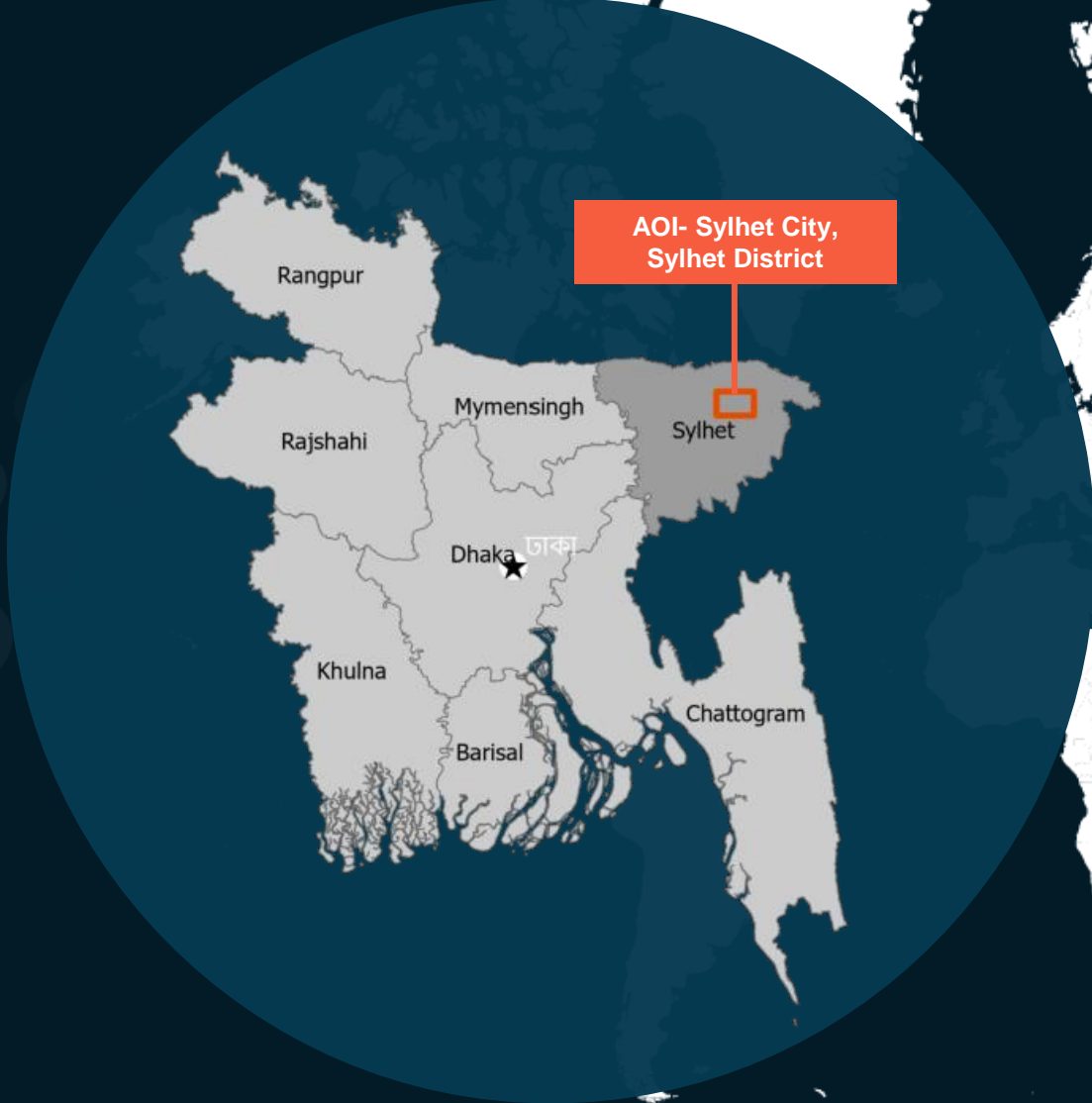


Sylhet City, Sylhet District, Sylhet Division, Bangladesh


 Status: No major flood in the City of Sylhet, inundated cropland observed in surrounding areas

 Further action(s): Continue monitoring

# Bangladesh



AOI- Sylhet City,  
Sylhet District

 Area of interest

# SYLHET CITY, SYLHET DISTRICT, SYLHET DIVISION

No major flood in the City of Sylhet, inundated cropland observed in surrounding areas



Pleiades image acquired on 30 August 2024 at 04:11 UTC  
Image center: 91°53'55"E 24°54'4"N

- Inundated road
- Inundated urban area
- Inundated agricultural area



# AOI1- SYLHET CITY, SYLHET DISTRICT, SYLHET DIVISION

No major flood observed

Image center:  
91°51'19"E  
24°53'15"N



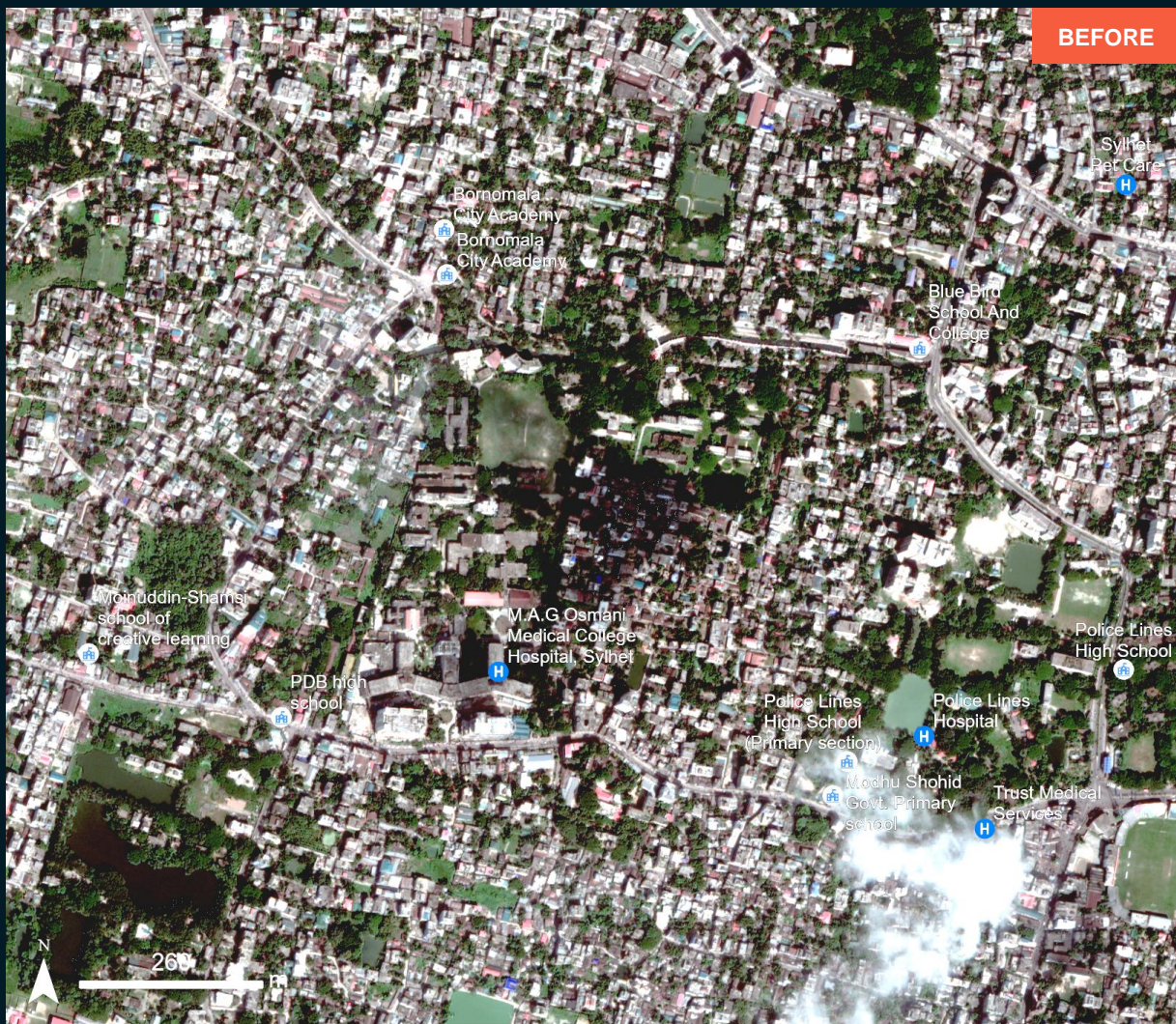
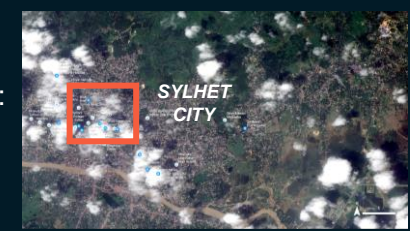
GEOEYE-1 / 30 October 2023

Pleiades / 30 August 2024

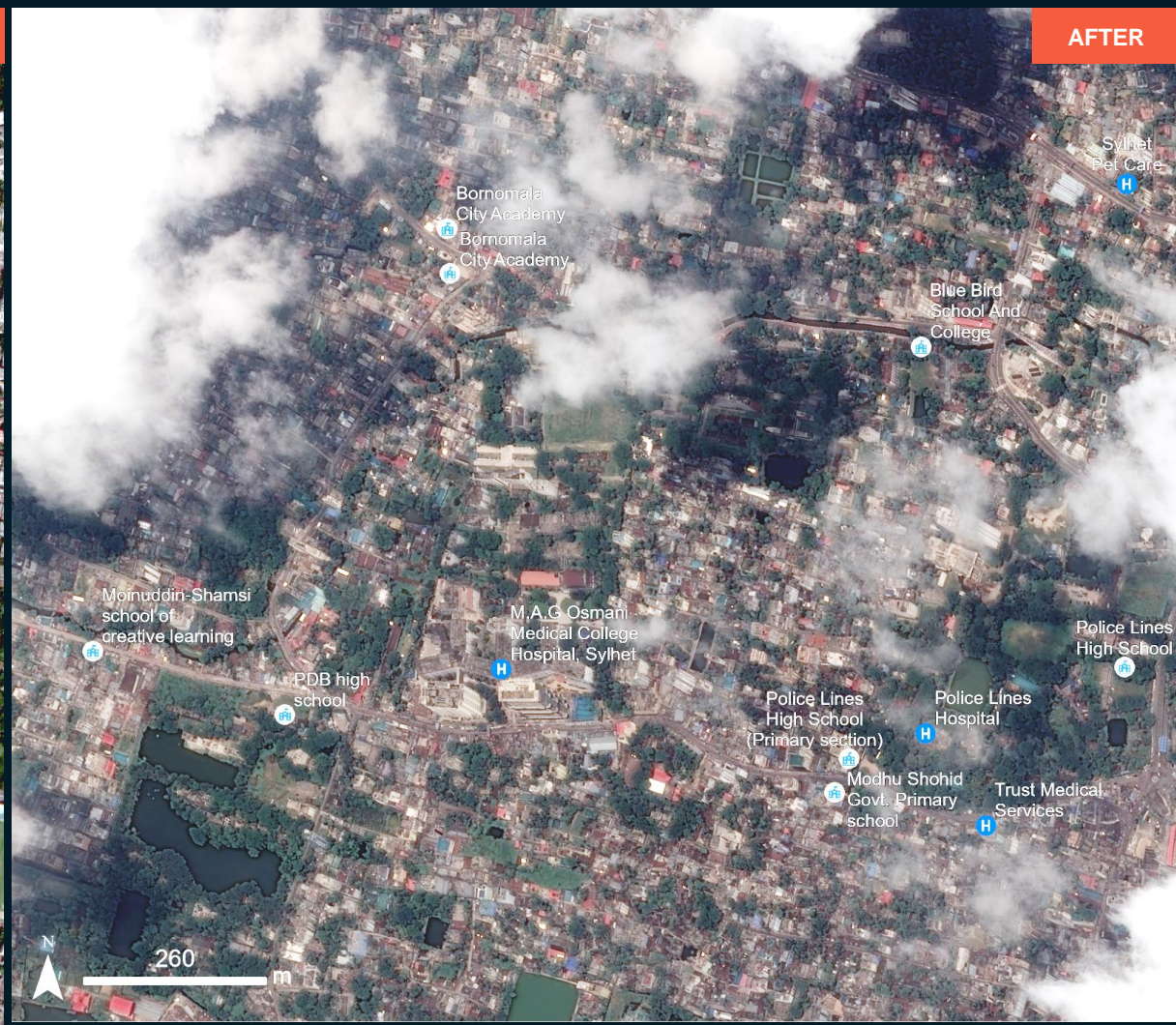
# AOI2- SYLHET CITY, SYLHET DISTRICT, SYLHET DIVISION

No major flood observed

Image center:  
91°51'17"E  
24°54'8"N



BEFORE



AFTER

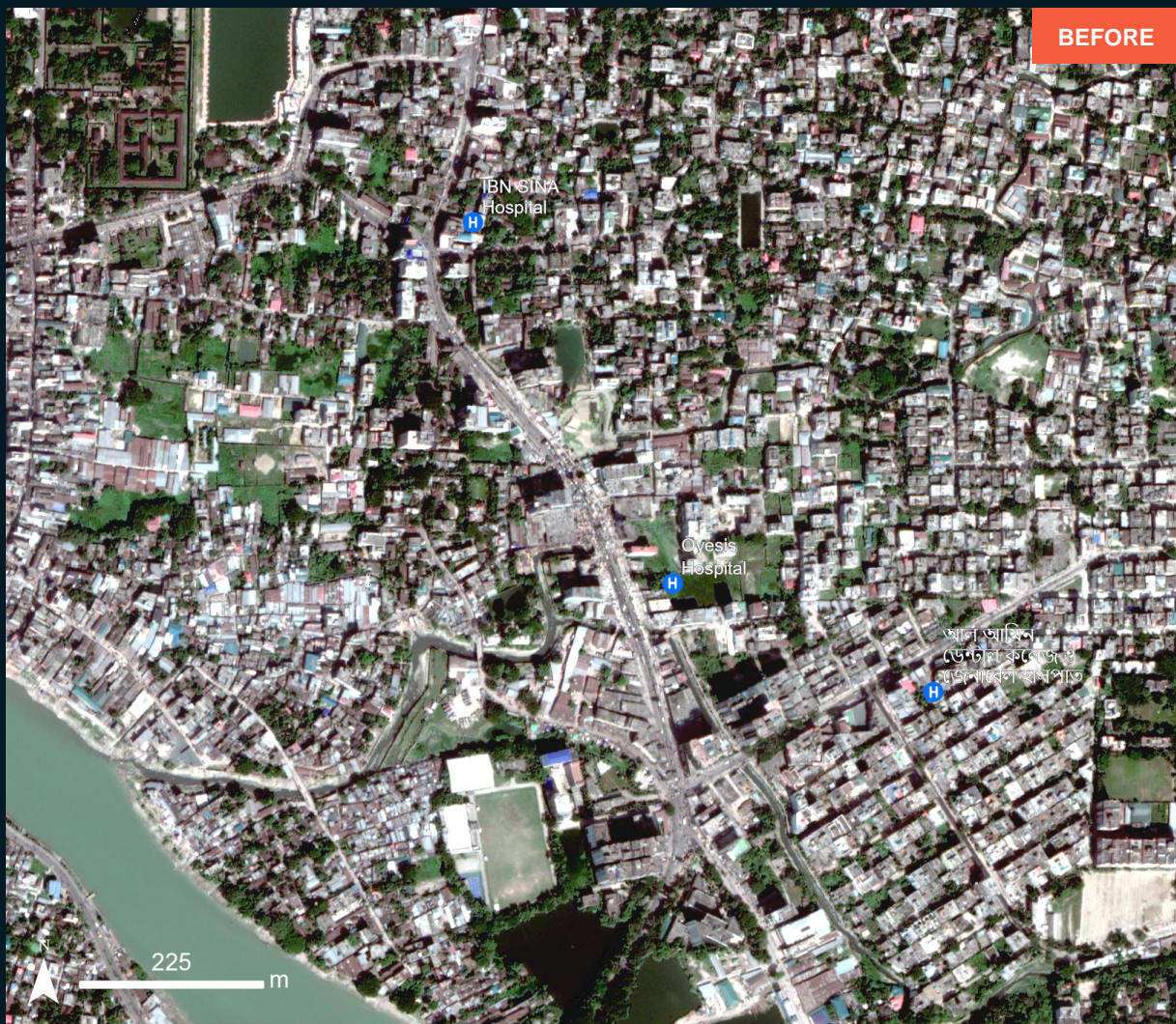
GEOEYE-1 / 30 October 2023

Pleiades / 30 August 2024

# AOI3- SYLHET CITY, SYLHET DISTRICT, SYLHET DIVISION

No major flood observed

Image center:  
91°52'48"E  
24°53'18"N



BEFORE



AFTER

GEOEYE-1 / 30 October 2023

Pleiades / 02 September 2024

# AOI4 - SYLHET CITY, SYLHET DISTRICT, SYLHET DIVISION

No major flood observed

Image center:  
91°54'8"E  
24°52'50"N



GEOEYE-1 / 30 October 2023

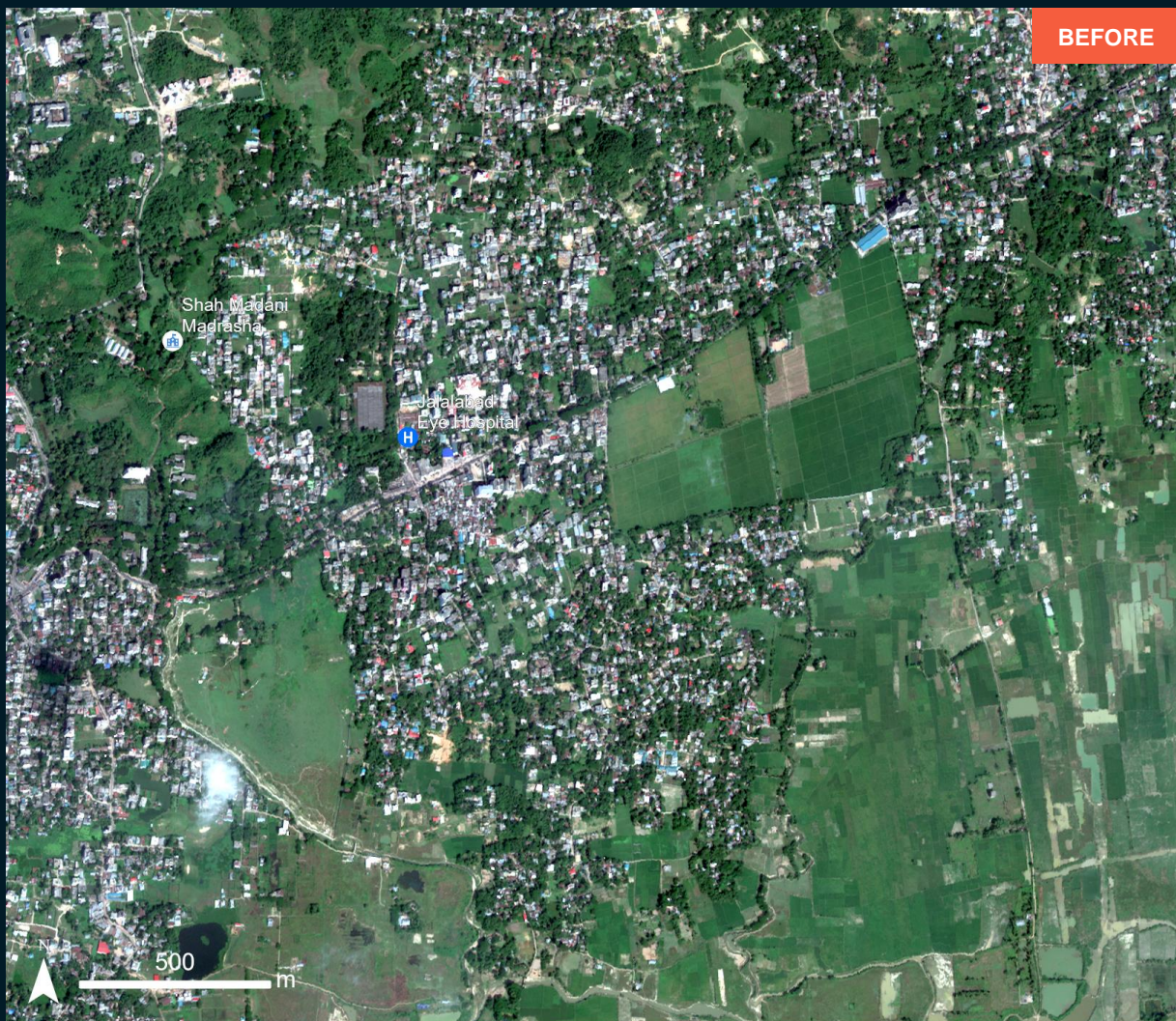


Pleiades / 02 September 2024

# AOI5 - SYLHET CITY, SYLHET DISTRICT, SYLHET DIVISION

Inundated structures and cropland

Image center:  
91°54'54"E  
24°53'55"N



GEOEYE-1 / 30 October 2023

Pleiades / 30 August 2024



# summary of findings

---

- No major flood in the City of Sylhet, inundated cropland observed in surrounding areas

# COPYRIGHTS & SOURCES

## Data sources:

### (1) Post image

Satellite Data: Pleiades

Imagery Dates: 30 August 2024 at 04:11 UTC and 2 September 2024 at 04:38 UTC

Resolution : 50cm

Copyright : CNES (2024), distribution Airbus D&S

Source : Airbus D&S

### (2) Pre-image

Satellite Data : GEOEYE-1

Imagery Dates: 30 October 2023

Resolution : 50 cm

Copyright: © (2024) DigitalGlobe, Inc., Longmont CO USA 80503.

DigitalGlobe and the DigitalGlobe logos are trademarks of DigitalGlobe, Inc.

The use and/or dissemination of this data and/or of any product in any way derived there from are restricted. Unauthorized use and/or dissemination is prohibited

Source: USGS

### (3) Ancillary data

Boundary data: Bangladesh Bureau of Statistics (BBS)

Populated place: OpenStreetMap

Waterways: OpenStreetMap

Analysis: United Nations Satellite Centre (UNOSAT)

Production: United Nations Satellite Centre (UNOSAT)

 **@UNOSAT**

 **@UNITAR.unosat**

 **/UNOSAT**



**UNOSAT**, United Nations Institute for Training  
and Research (UNITAR)  
7 bis, Avenue de la Paix, CH-1202 Geneva 2,  
Switzerland

T +41 22 917 4720  
E [unosat@unitar.org](mailto:unosat@unitar.org)  
[www.unosat.org](http://www.unosat.org)