



29 August 2024

# PRELIMINARY SATELLITE- DERIVED IMPACT ASSESSMENT ON HEALTH FACILITIES



Tawkar Locality, Red Sea State, Sudan

 Status: flood water detected

 Further action(s): continue monitoring

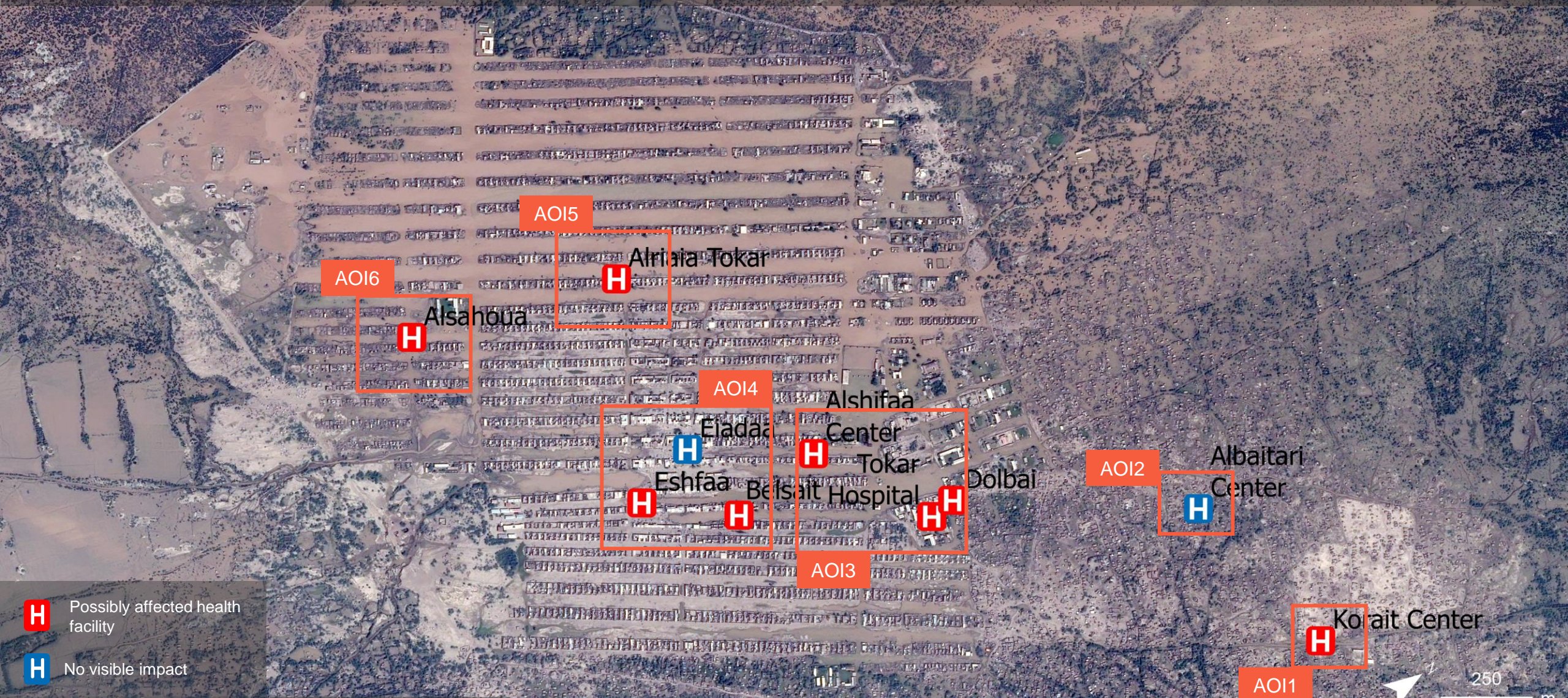
# Sudan

29 August 2024



# AOI : Tokar Town, Tawkar Locality, Red Sea State

Tokar town flooded – Some health facilities appear to be affected by flood waters



**H** Possibly affected health facility  
**H** No visible impact



# AOI 1: Korai Center, Tokar Town

Korai Center potentially affected

Image center:  
18°26'11"N  
37°44'48"E



GeoEye-1 / 13 April 2021



Pleiades / 29 August 2024

# AOI 2: Albaitari Center, Tokar Town

Image center:  
18°26'08"N  
37°44'30"E



No floods observed in the vicinity of Albaitari Center



GeoEye-1 / 13 April 2021



Pleiades / 29 August 2024

# AOI 3: Dolbai / Tokar Hospital / Alshifaa Center, Tokar Town

Dolbai, Tokar Hospital & Alshifaa Center affected

Image center:  
18°25'47"N  
37°44'12"E



BEFORE

GeoEye-1 / 13 April 2021



AFTER

Alshifaa Center affected

Dolbai affected

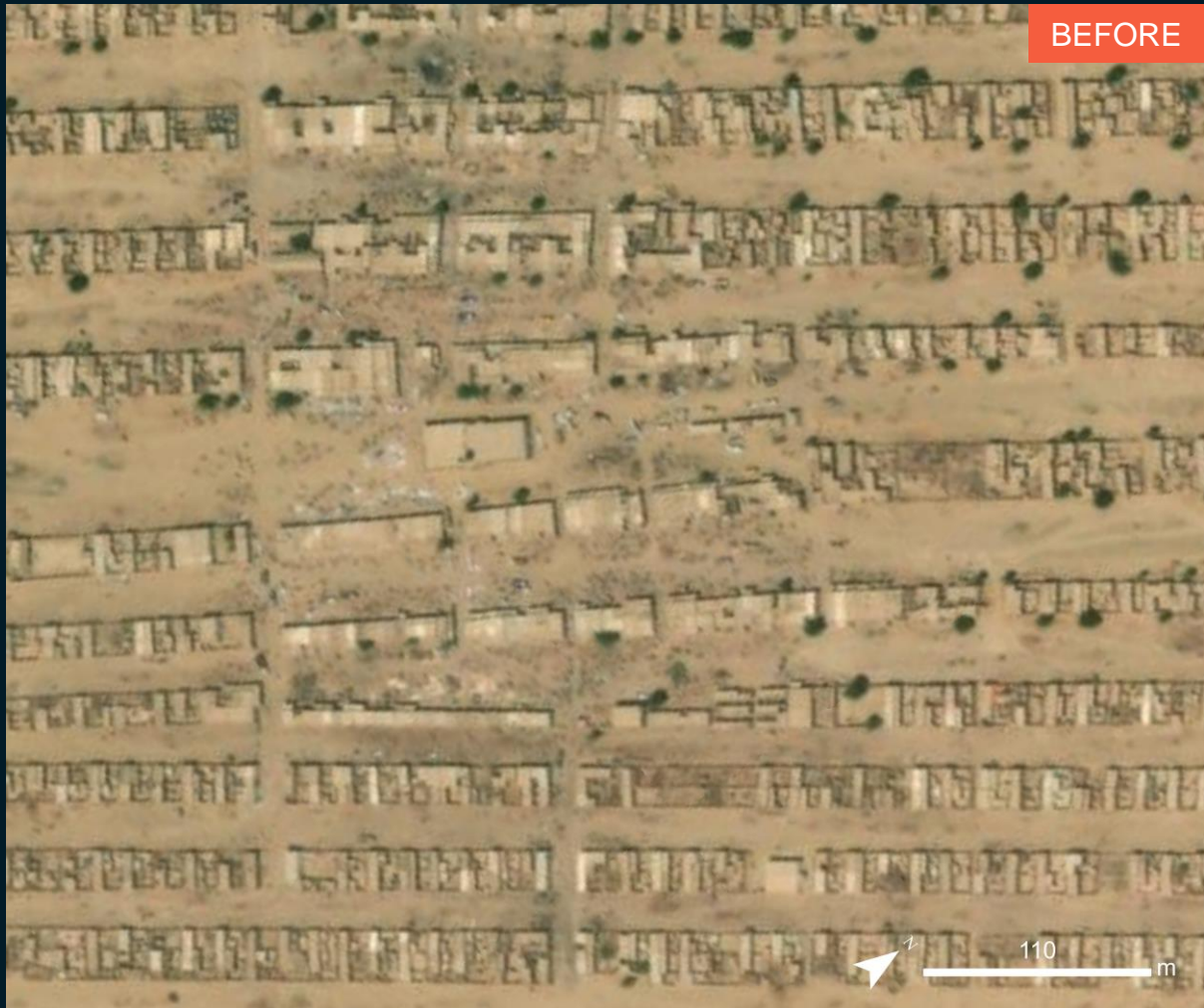
Tokar Hospital affected

Pleiades / 29 August 2024

# AOI 4: Belsait / Eshfaa / Eiadaa, Tokar Town

Belsait & Eshfaa affected

Image center:  
18°25'32"N  
37°44'02"E



BEFORE



AFTER

Eiadaa not affected



Eshfaa affected



Belsait affected



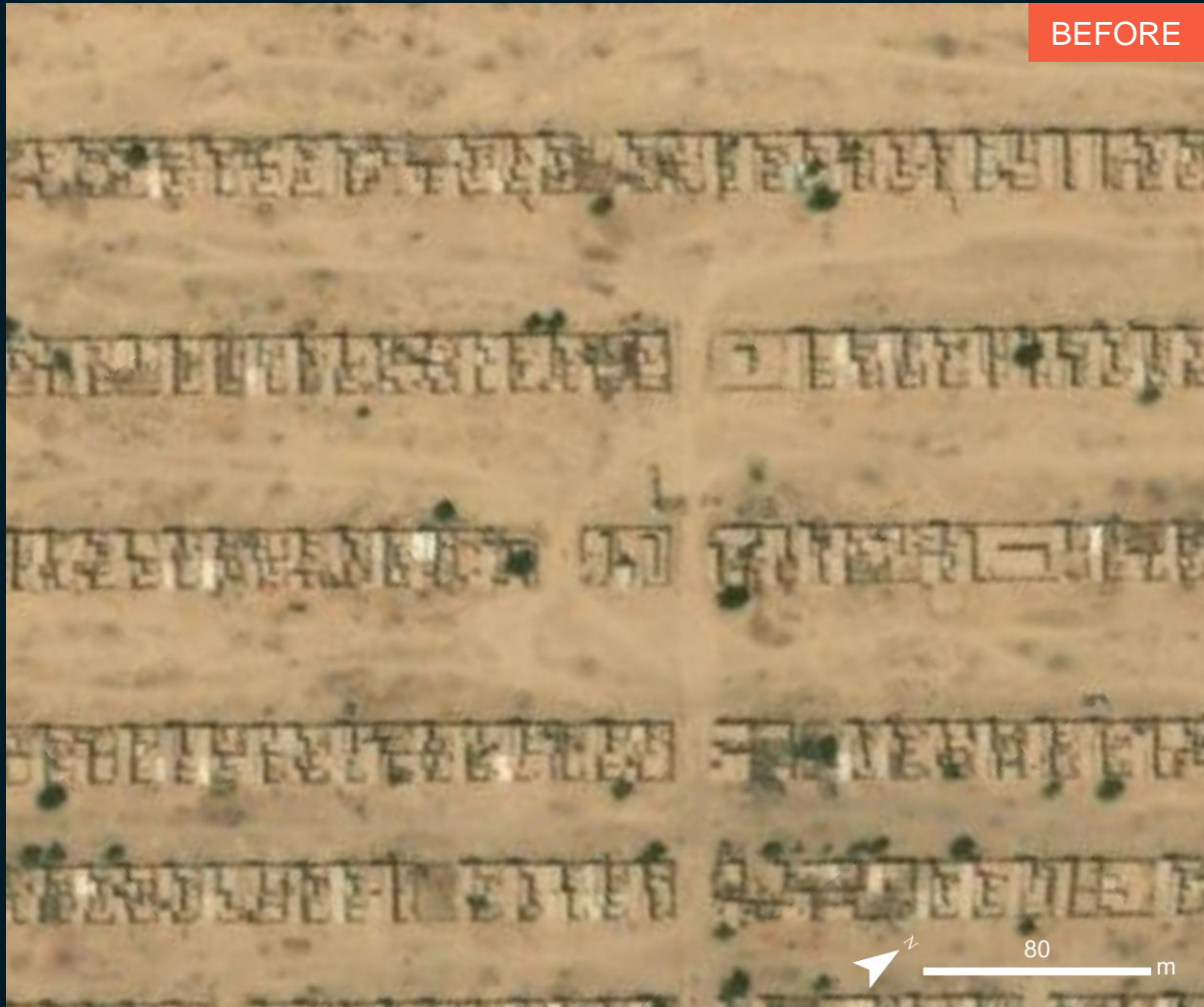
GeoEye-1 / 13 April 2021

Pleiades / 29 August 2024

# AOI 5: Alriaia Tokar, Tokar Town

Alriaia Tokar affected

Image center:  
18°25'37"N  
37°43'42"E



GeoEye-1 / 13 April 2021



Pleiades / 29 August 2024



# AOI 6: Alshoua, Tokar Town

Alshoua affected

Image center:  
18°25'21"N  
37°43'36"E



BEFORE

GeoEye-1 / 13 April 2021



AFTER

Pleiades / 29 August 2024

# SUMMARY OF FINDINGS

---

- Flood waters observed in Tokar Town, Tokar Locality, Red Sea State as of 29 August 2024;
- Albaitari Center & Eiadaa appears to be not affected by floods waters as of 29 August 2024;
- Korait Center, Dolbai, Tokar Hospital, Alshifaa Center, Belsait, Eshfaa, Alriaia Tokar & Alsahoua are likely affected by flood waters.

# COPYRIGHTS & SOURCES

## Data sources:

(1) Satellite Image (Post-event): Pléiades

Acquisition date : 29 August 2024, 08:27 UTC

Resolution: 50cm

Copyright: Includes Pleiades material © CNES (2024), Distribution

Airbus DS

Source: Airbus D&S

(2) Satellite Image (Pre-event):

ESRI Basemap

(3) Ancillary data

Administrative boundaries: UNOCHA

Health facilities: World Health Organisation

Populated place: OpenStreetMap

Waterway: OpenStreetMap

Road data: OpenStreetMap

Analysis: United Nations Satellite Centre (UNOSAT)

Production: United Nations Satellite Centre (UNOSAT)



**@UNOSAT**



**@UNITAR.unosat**



**/UNOSAT**



---

**United Nations Satellite Centre (UNOSAT),**  
United Nations Institute for Training and  
Research (UNITAR)  
7 bis, Avenue de la Paix, CH-1202 Geneva 2,  
Switzerland

T +41 22 917 4720  
E [unosat@unitar.org](mailto:unosat@unitar.org)  
[www.unosat.org](http://www.unosat.org)