


17 JULY 2024

# PRELIMINARY SATELLITE-DERIVED DAMAGE ASSESSMENT



Westmoreland, Saint Elizabeth & Manchester  
Parishes, Jamaica

 Status: No widespread damage observed

 Further action(s): continue monitoring

# JAMAICA

17 July 2024

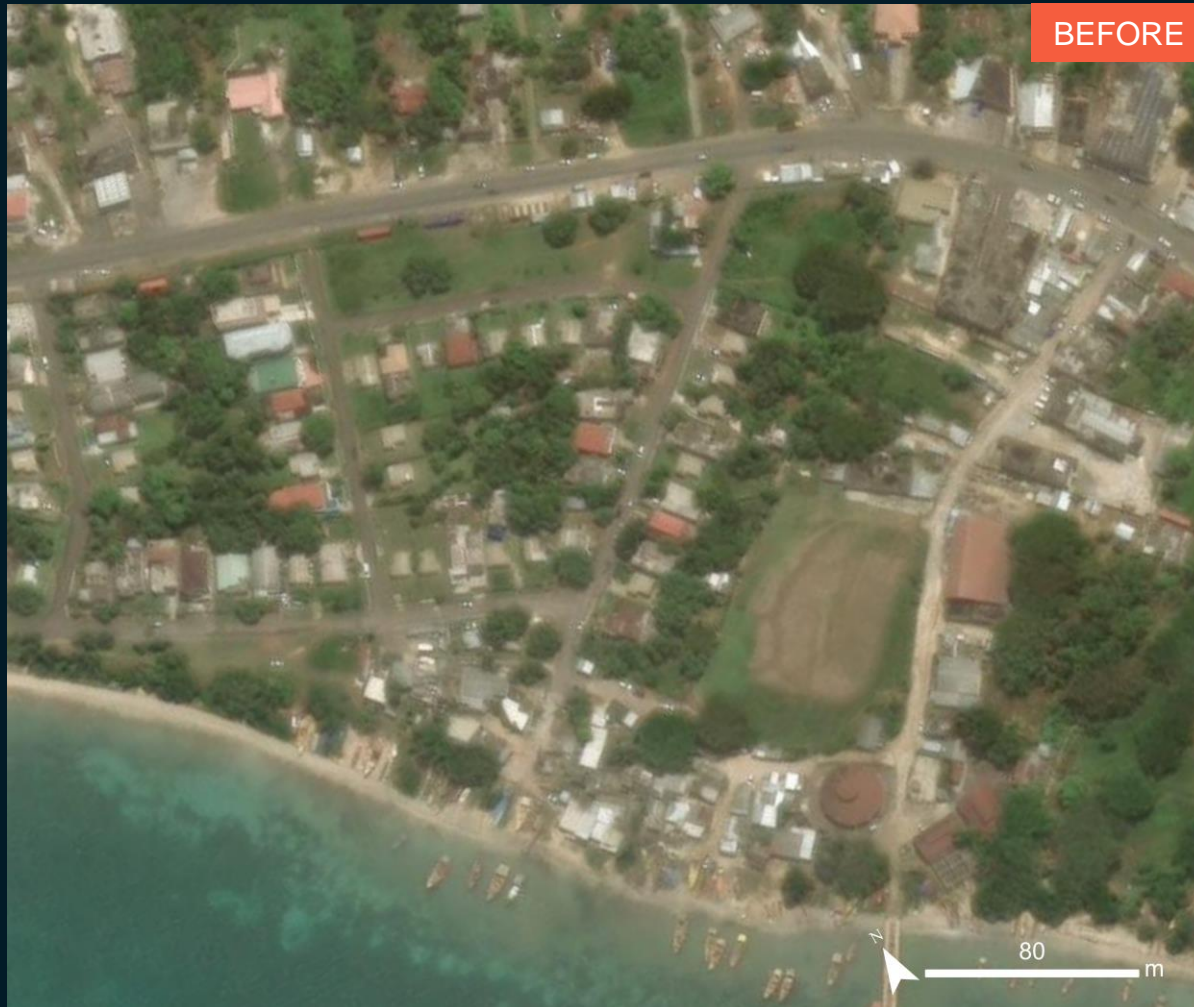




# AOI 1 : Whitehouse Village, Westmoreland Parish

No major damage observed

Image center:  
77°58'02"W  
18°05'23"N



GeoEye-1 / 21 September 2023



WorldView-3 / 09 July 2024



# AOI 1 : Black River Village, Saint Elizabeth Parish

No major damage observed

Image center:  
77°50'52"W  
18°01'29"N



GeoEye-1 / 21 September 2023



WorldView-3 / 09 July 2024



## AOI 2 : Santa Cruz Town, Saint Elizabeth Parish

No major damage observed

Image center:  
77°41'37"W  
18°02'33"N



WorldView-2 / 20 October 2023



WorldView-2 / 12 July 2024



# AOI 2 : Develders Pass Hamlet, Saint Elizabeth Parish

Potentially affected structure

Image center:  
77°45'01"W  
18°00'48"N



BEFORE

WorldView-3 / 18 March 2021



AFTER

Potentially  
affected  
structure

WorldView-2 / 12 July 2024



## AOI 2 : Prospect Hamlet, Manchester Parish

No major damage observed

Image center:  
77°34'48"W  
17°59'02"N



WorldView-3 / 28 December 2022



WorldView-2 / 12 July 2024

# SUMMARY OF FINDINGS

---

- No major damage observed in Westmoreland & Saint Elizabeth Parishes as of 09 July 2024;
- No major damage observed in Saint Elizabeth & Manchester Parishes as of 12 July 2024.



# COPYRIGHTS & SOURCES

## Data sources:

(1) Satellite Image (Post-event): WorldView-2  
Acquisition date : 12 July 2024  
Resolution: 50 cm  
Copyright: © 2024 Maxar  
Source: USGS

(2) Satellite Image (Pre-event): WorldView-3  
Acquisition date : 09 July 2024  
Resolution: 30 cm  
Copyright: © MAXAR (2024)  
Source: USGS

## (3) Ancillary data

Administrative boundaries: GADM contributed to HDX by OCHA (FISS)  
Cyclone path and location : EC-JRC, GDACS  
Populated place: OpenStreetMap  
Index map : World Topographic Map

Analysis: United Nations Satellite Centre (UNOSAT)  
Production: United Nations Satellite Centre (UNOSAT)



 **@UNOSAT**

 **@UNITAR.unosat**

 **/UNOSAT**



**UNOSAT**, United Nations Institute for Training  
and Research (UNITAR)  
7 bis, Avenue de la Paix, CH-1202 Geneva 2,  
Switzerland

T +41 22 917 4720  
E [unosat@unitar.org](mailto:unosat@unitar.org)  
[www.unosat.org](http://www.unosat.org)