


05 JULY 2024

PRELIMINARY SATELLITE-DERIVED DAMAGE ASSESSMENT

Kingston, JAMAICA

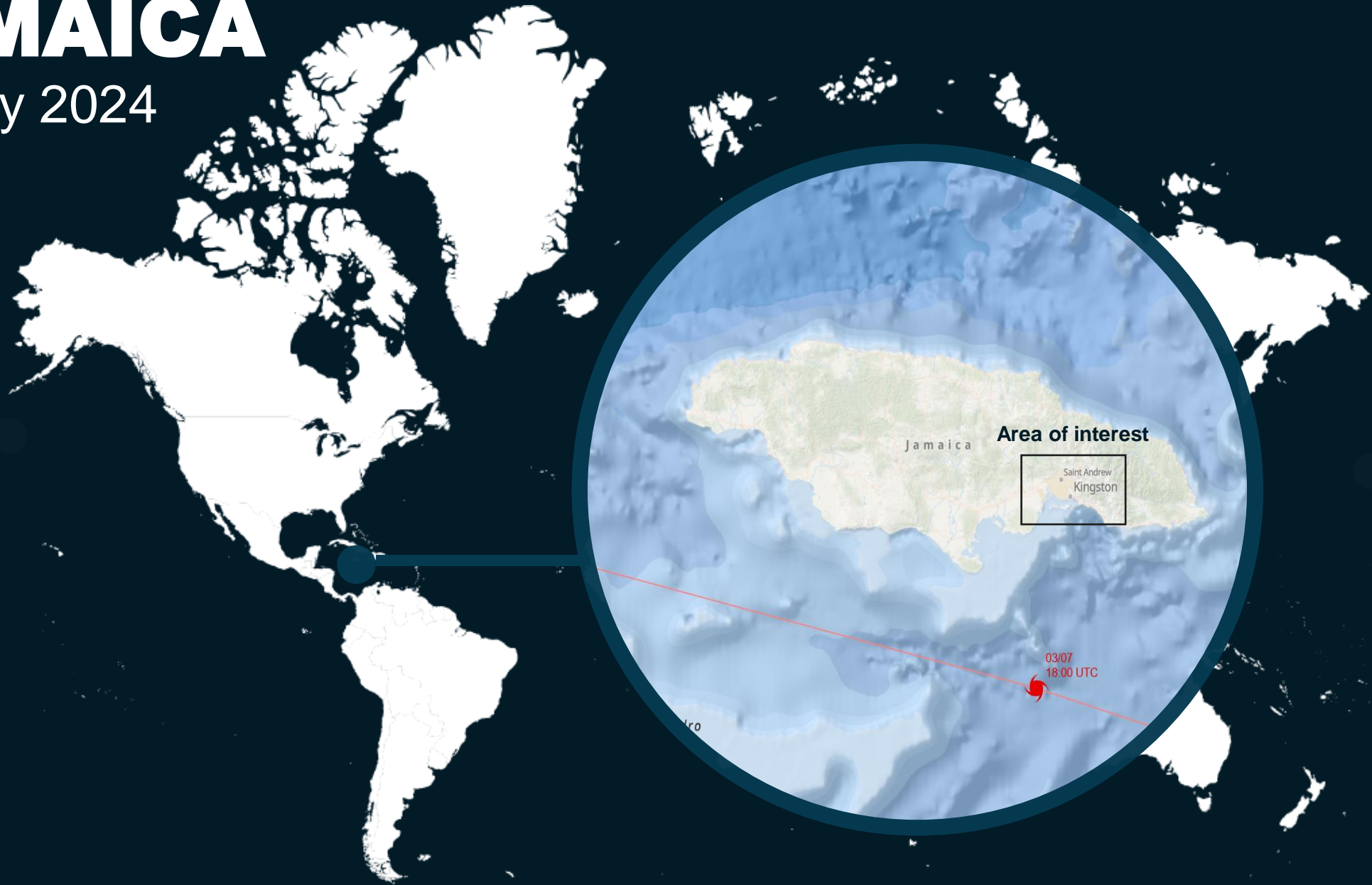
 Status: Potentially damaged structures observed

 Further action(s): continue monitoring



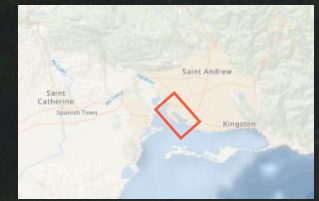
JAMAICA

05 July 2024



AOI 1 : Port of Kingston, Saint Andrew Parish, Jamaica

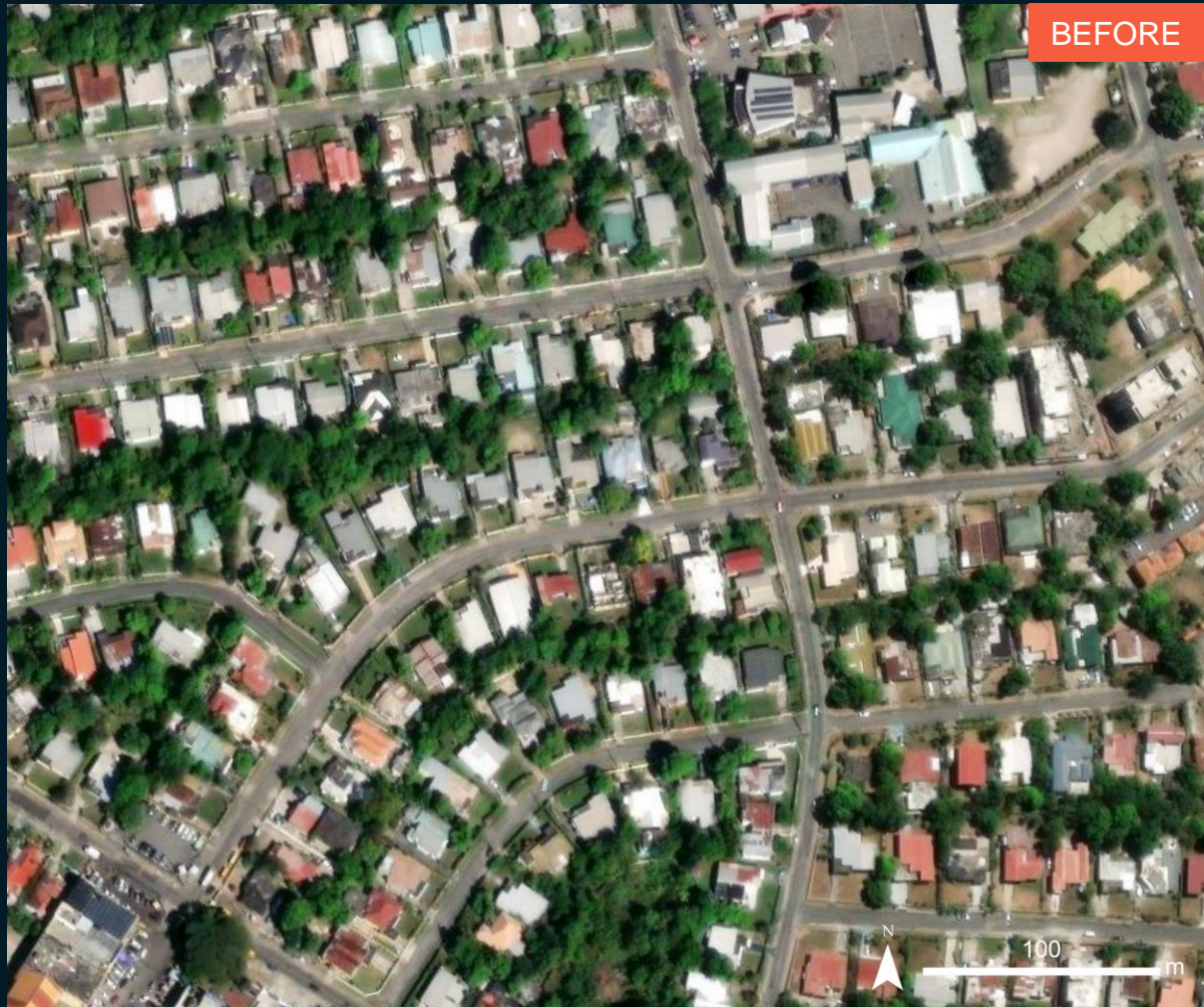
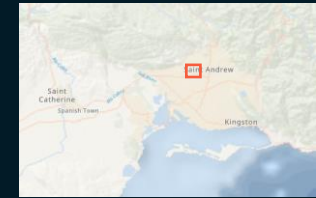
No major damage observed



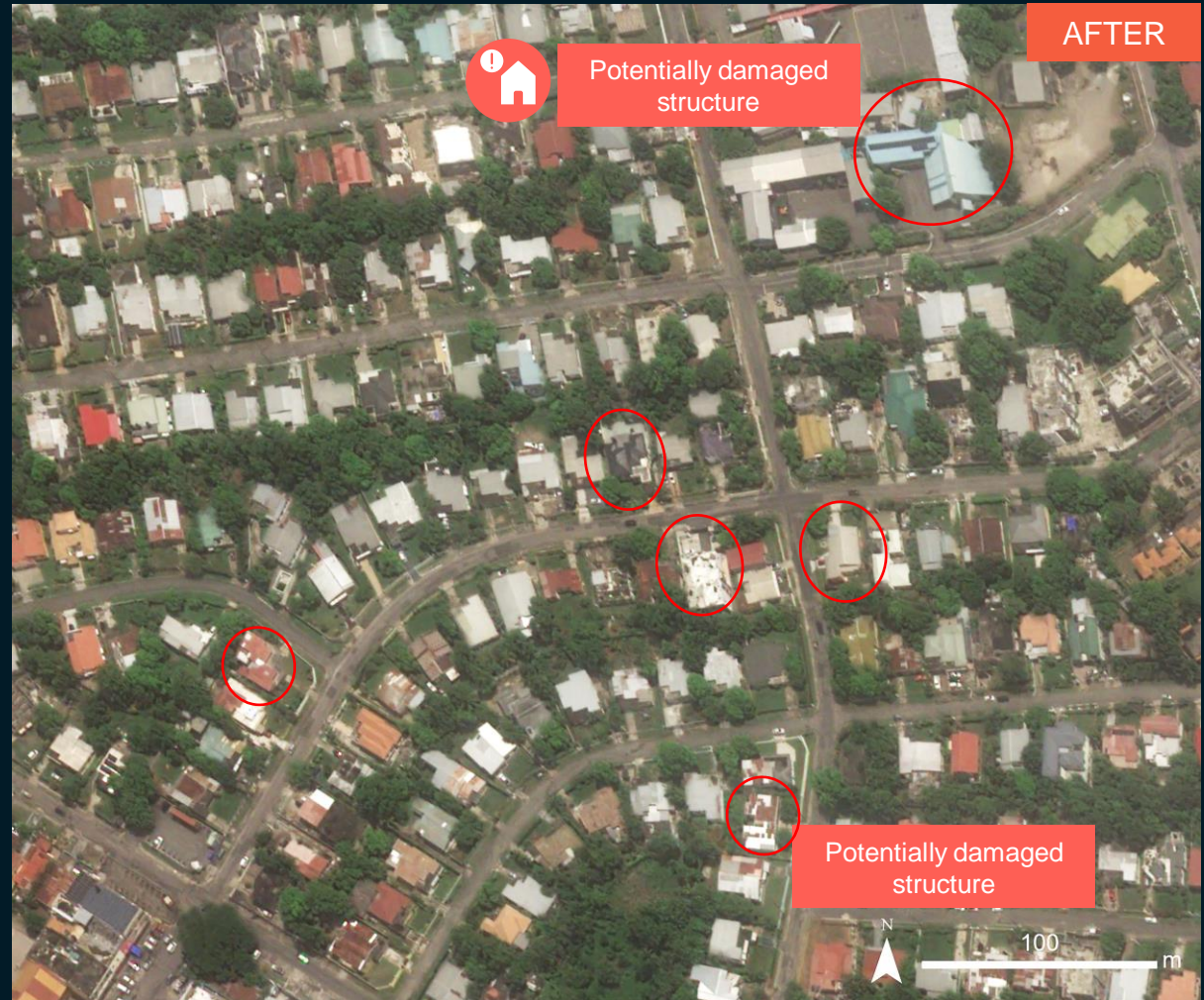
AOI 2 : Meadowbrook, Saint Andrew Parish, Jamaica

Potentially damaged structures

Image center:
76°48'52"W
18°2'48"N



WorldView-2 / 17 March 2023

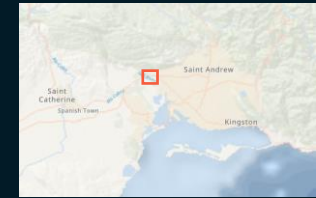


Pleiades NEO / 4 July 2024

AOI 3 :, Saint Andrew Parish, Jamaica

Increased water level in rivers and wetlands and potentially affected structures

Image center:
76°50'56"W
18°0'42"N



WorldView-2 / 17 March 2023

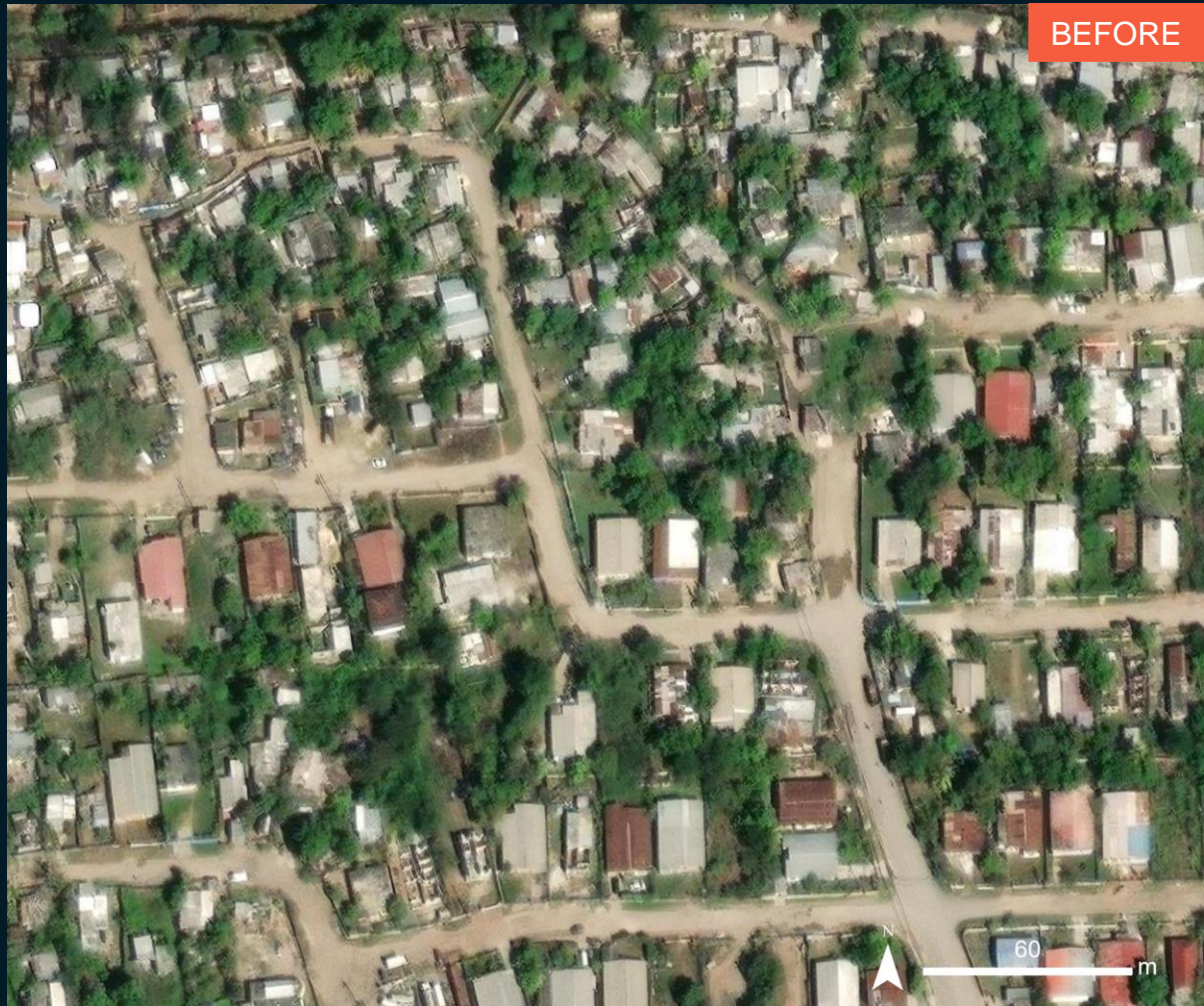
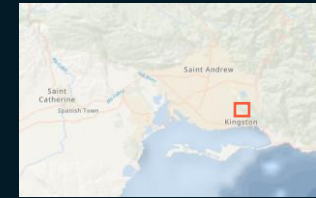


Pleiades NEO / 4 July 2024

AOI 4 :, New Haven, Saint Andrew Parish, Jamaica

Standing floodwater and affected roads

Image center:
76°51'19"W
18°1'55"N



WorldView-2 / 17 Mach 2023



Pleiades NEO / 4 July 2024

AOI 5 : Saint Catherine Parish, Jamaica

Damaged structures

Image center:
76°55'W
17°56'10"N



WorldView-3 / 1 July 2024

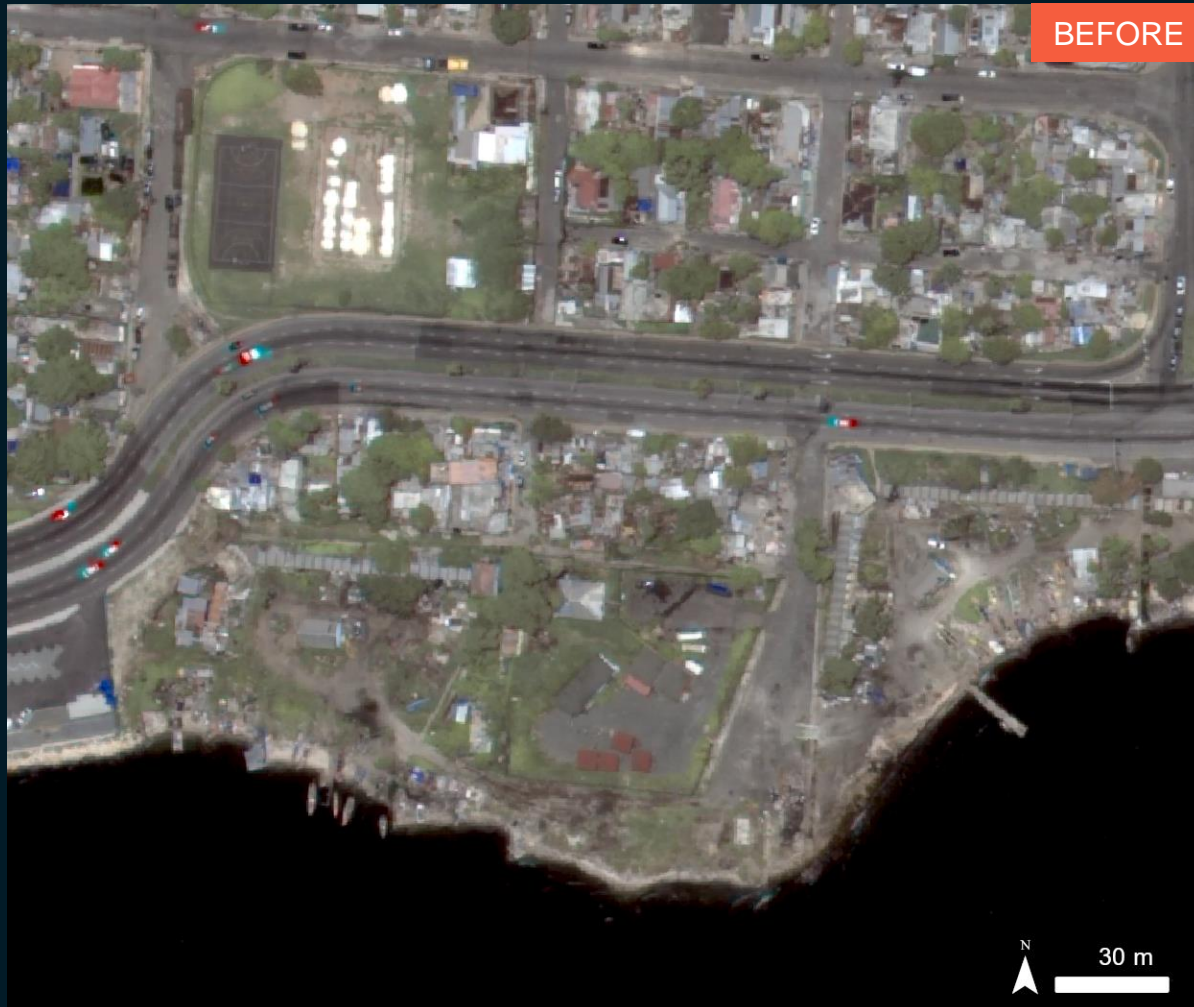
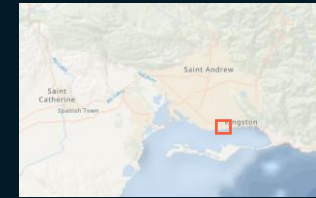


Pleiades NEO / 4 July 2024

AOI 6 : Rae Town, Kingston Parish, Jamaica

Potentially damaged structures

Image center:
76°46'38"W
17°57'55"N



WorldView-3 / 1 July 2024

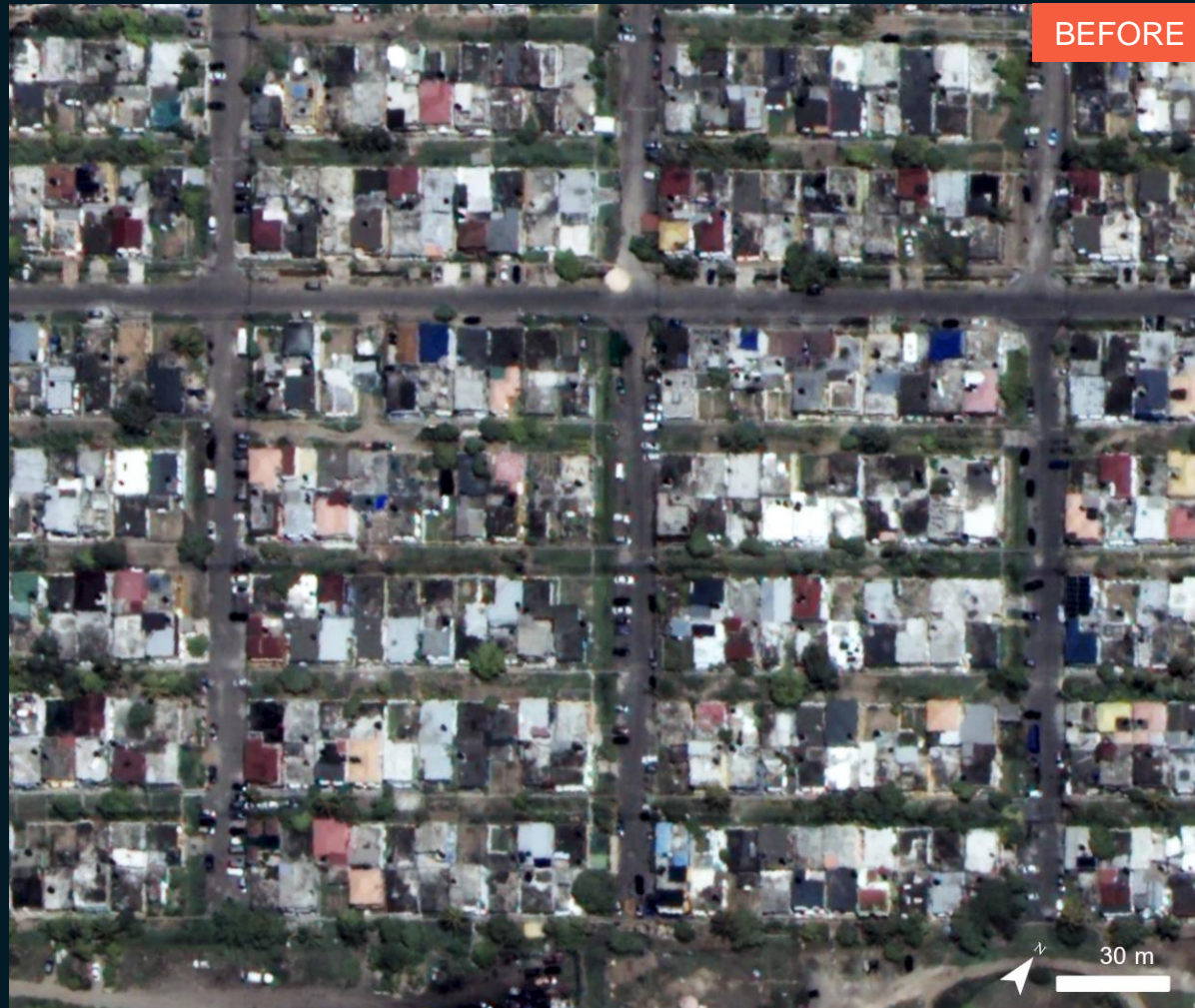


Pleiades NEO / 4 July 2024

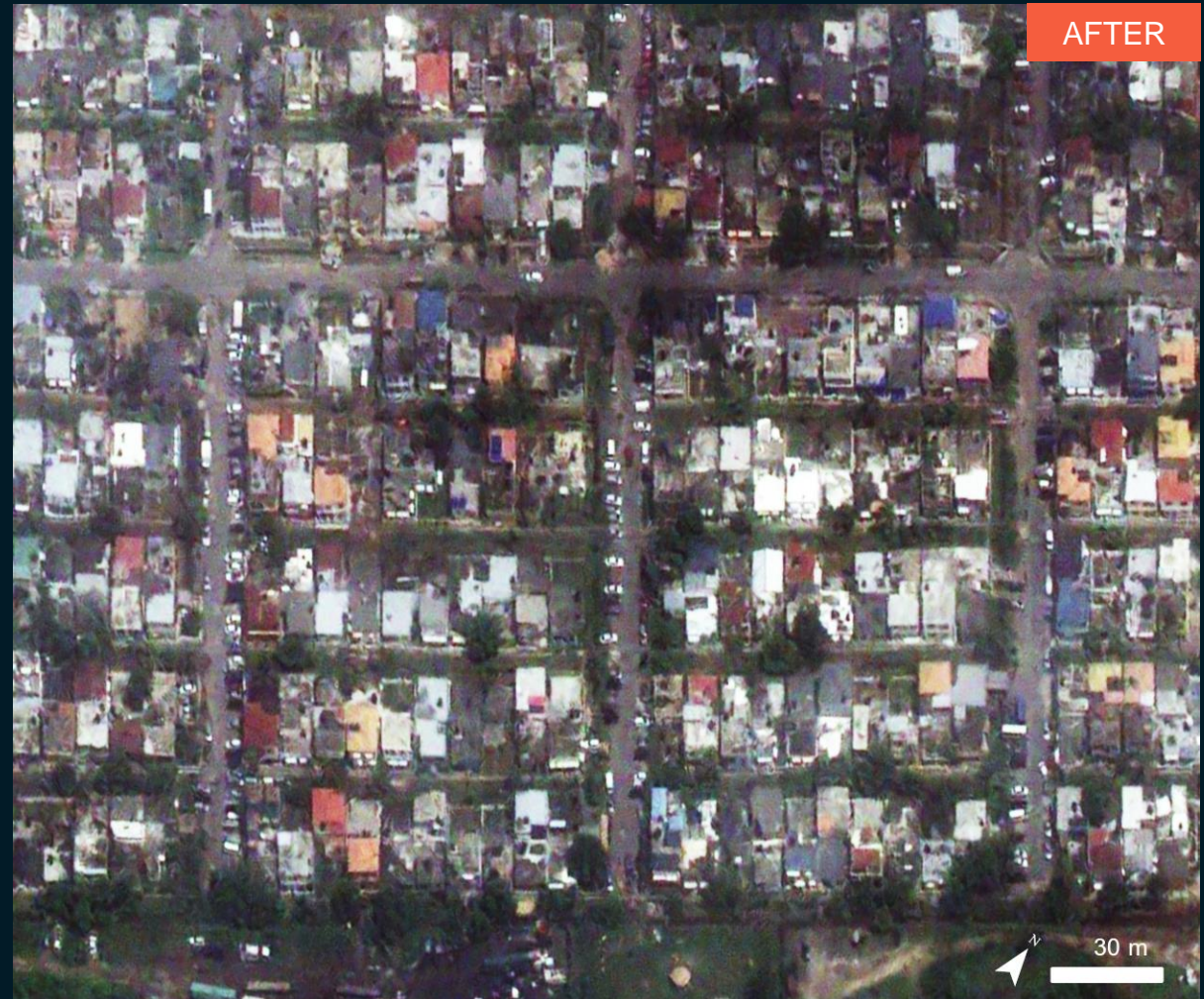
AOI 7 : Greater Portmore, Saint Catherine Parish, Jamaica

No major damaged structures

Image center:
76°54'16"W
17°55'58"N



WorldView-3 / 1 July 2024



Pleiades NEO / 4 July 2024

SUMMARY OF FINDINGS

- No major damage observed in the Port of Kingston, Jamaica as of 04 July 2024.
- Potentially damaged structures observed in Saint Andrew Parish, Kingston Parish and Saint Catherine Parishes, Jamaica as of 04 July 2024;
- Flooded areas, inundated roads and potentially affected structures observed in Saint Andrew Parish as of 04 July 2024.

COPYRIGHTS & SOURCES

Data sources:

(1) Satellite Image (Post-event): Pleiades neo

Acquisition date : 4 July 2024

Resolution: 50 cm

Copyright: © AIRBUS D&S (2024)

Source: AIRBUS D&S

(2) Satellite Image (Pre-event): WorldView-3

Acquisition date : 1 July 2024

Resolution: 30 cm

Copyright: © MAXAR (2024)

Source: USGS

(3) Satellite Image (Post-event): WorldView-2

Acquisition date : 17 March 2013

Resolution: 50 cm

Copyright: © MAXAR (2013)

Source: ESRI Base map

(3) Ancillary data

Administrative boundaries: GADM contributed to HDX by OCHA (FISS)

Cyclone path and location : EC-JRC, GDACS

Index map : World Topographic Map

Analysis: United Nations Satellite Centre (UNOSAT)

Production: United Nations Satellite Centre (UNOSAT)



@UNOSAT



@UNITAR.unosat



/UNOSAT



UNOSAT, United Nations Institute for Training
and Research (UNITAR)
7 bis, Avenue de la Paix, CH-1202 Geneva 2,
Switzerland

T +41 22 917 4720
E unosat@unitar.org
www.unosat.org