


04 JULY 2024

# PRELIMINARY SATELLITE-DERIVED DAMAGE ASSESSMENT

Carriacou, GRENADA

 Status: Widespread damage observed

 Further action(s): continue monitoring



# GRENADA

04 July 2024





# AOI 1 : Lauriston/Carriacou Airport, Carriacou Parishe, Grenada

Potentially damaged building observed in the airport.  
Widespread damage detected surrounding the airport.



WorldView-2 image acquired on 2 July 2024, 14:55 UTC  
Image Center : 61°28'29"W 12°28'29"N



# AOI 1 – 1 : Carriacou Parishe, Grenada

Widespread damage to structures in the vicinity of the airport

Image center:  
 $61^{\circ}28'28''\text{W}$   
 $12^{\circ}28'30''\text{N}$



GeoEye-1 / 8 May 2023



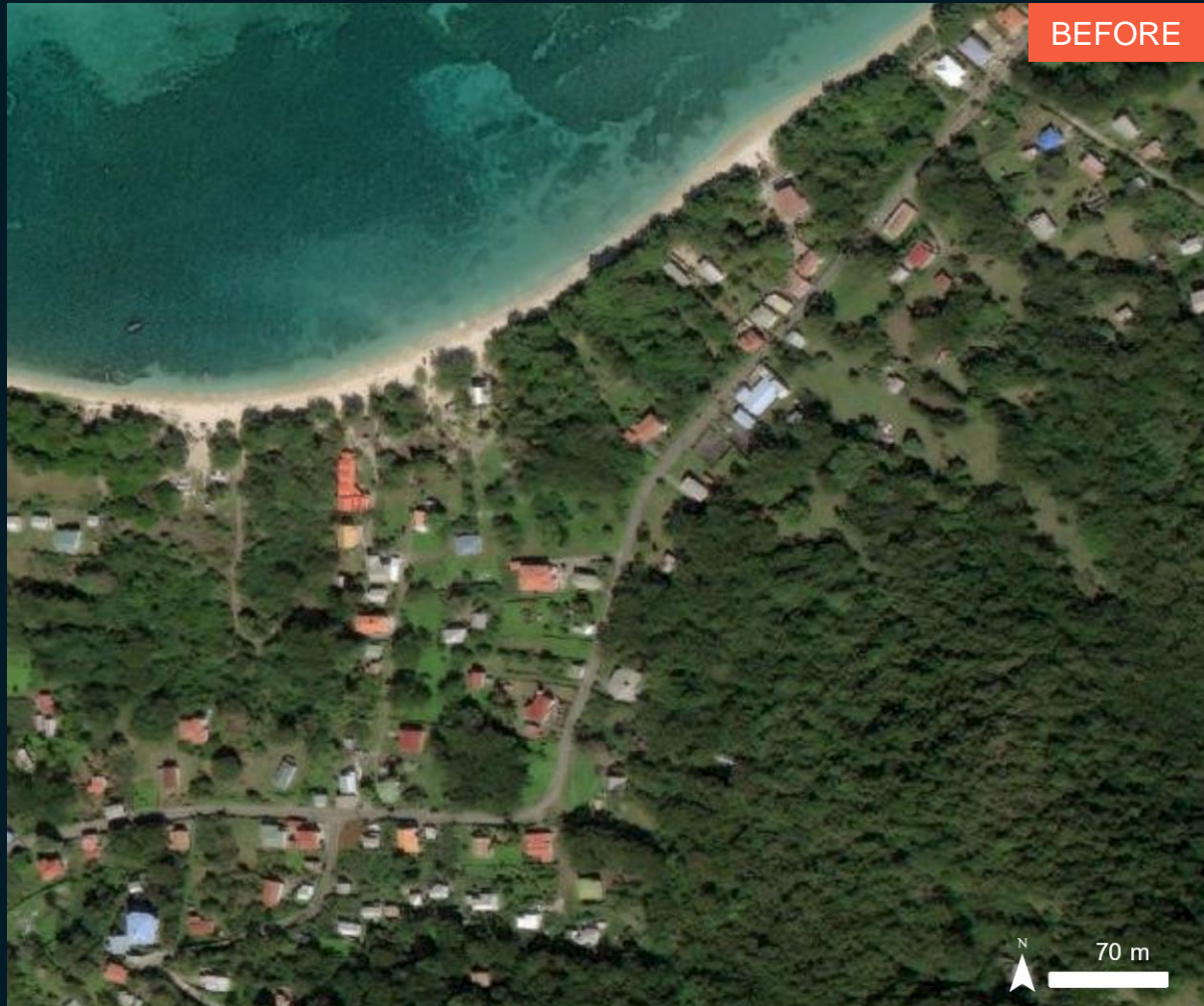
WorldView-2 / 2 July 2024



## AOI 2 : Carriacou Parishe, Grenada

Widespread damage

Image center:  
61°28'48"W  
12°28'20"N



WorldView-2 / 14 January 2014



WorldView-2 / 2 July 2024



# AOI 3 : Tyrell Bay, Carriacou Parishe, Grenada

Damaged structures observed in Tyrrel Bay Port

Image center:  
61°29'02"W  
12°27'42"N



GeoEye-1 / 8 May 2023



WorldView-2 / 2 July 2024



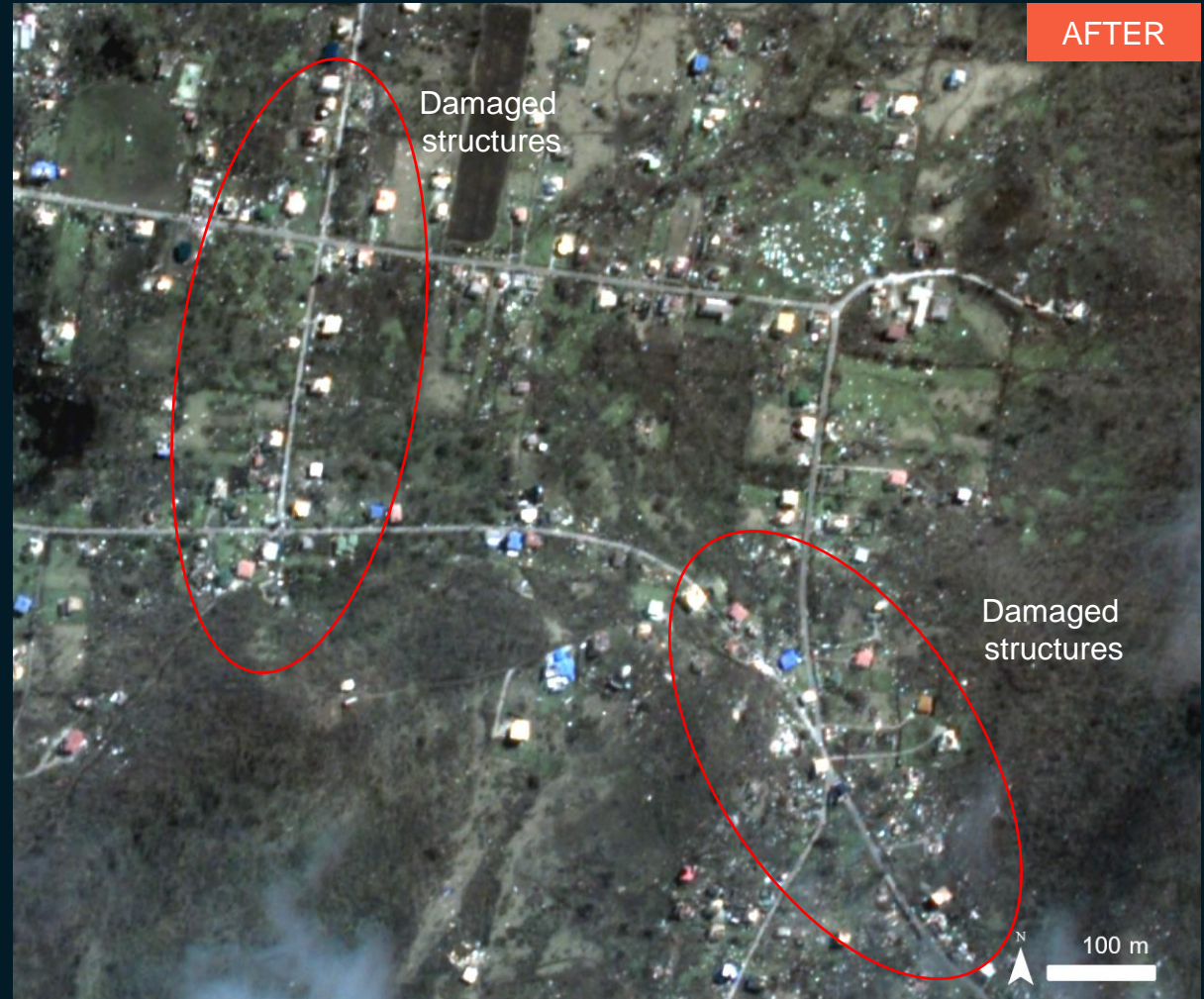
# AOI 4 : Tyrell Bay, Carriacou Parishe, Grenada

Widespread damaged structures observed in Tyrrel Bay Port

Image center:  
61°28'40"W  
12°27'21"N



GeoEye-1 / 8 May 2023



WorldView-2 / 2 July 2024



# AOI 5 : Carriacou Parishe, Grenada

Widespread damaged structures

Image center:  
61°27'29"W  
12°28'55"N



GeoEye-1 / 8 May 2023



WorldView-2 / 2 July 2024



# AOI 6 : Carriacou Parishe, Grenada

Widespread damaged structures

Image center:  
61°25'54"W  
12°30'20"N



GeoEye-1 / 8 May 2023



WorldView-2 / 2 July 2024



# SUMMARY OF FINDINGS

---

- Widespread damage to structures observed in Carriacou Island (Grenada) as of 02 July 2024.
- The airport building is potentially damaged;
- Runway of Carriacou airport appears to do not be damaged a as of 02 July 2024;
- Potentially damaged harbor observed at Tyrrel Bay Port as of 02 July 2024;



# COPYRIGHTS & SOURCES

## Data sources:

(1) Satellite Image (Post-event): WorldView-2

Acquisition date : 2 July 2024

Resolution: 50 cm

Copyright: © MAXAR 2024

Source: USGS

(2) Satellite Image (Pre-event): Geoeye-1

Acquisition date : 8 May 2023

Resolution: 50 cm

Copyright: © MAXAR 2023

Source: USGS

(3) Satellite Image (Post-event): WorldView-2

Acquisition date : 14 January 2014

Resolution: 50 cm

Copyright: © MAXAR 2014

Source: ESRI Base map

## (3) Ancillary data

Administrative boundaries: GADM contributed to HDX by OCHA (FISS)

Cyclone path and location : EC-JRC, GDACS

Index map : World Topographic Map

Analysis: United Nations Satellite Centre (UNOSAT)

Damage analysis: Copernicus EMS

Production: United Nations Satellite Centre (UNOSAT)



 **@UNOSAT**

 **@UNITAR.unosat**

 **/UNOSAT**