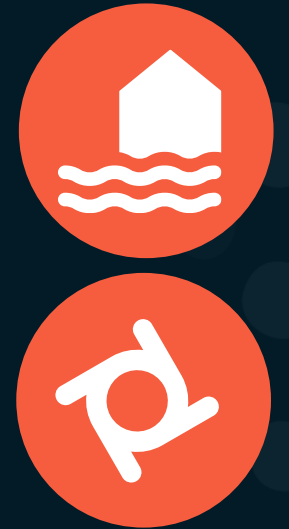




3 June 2024

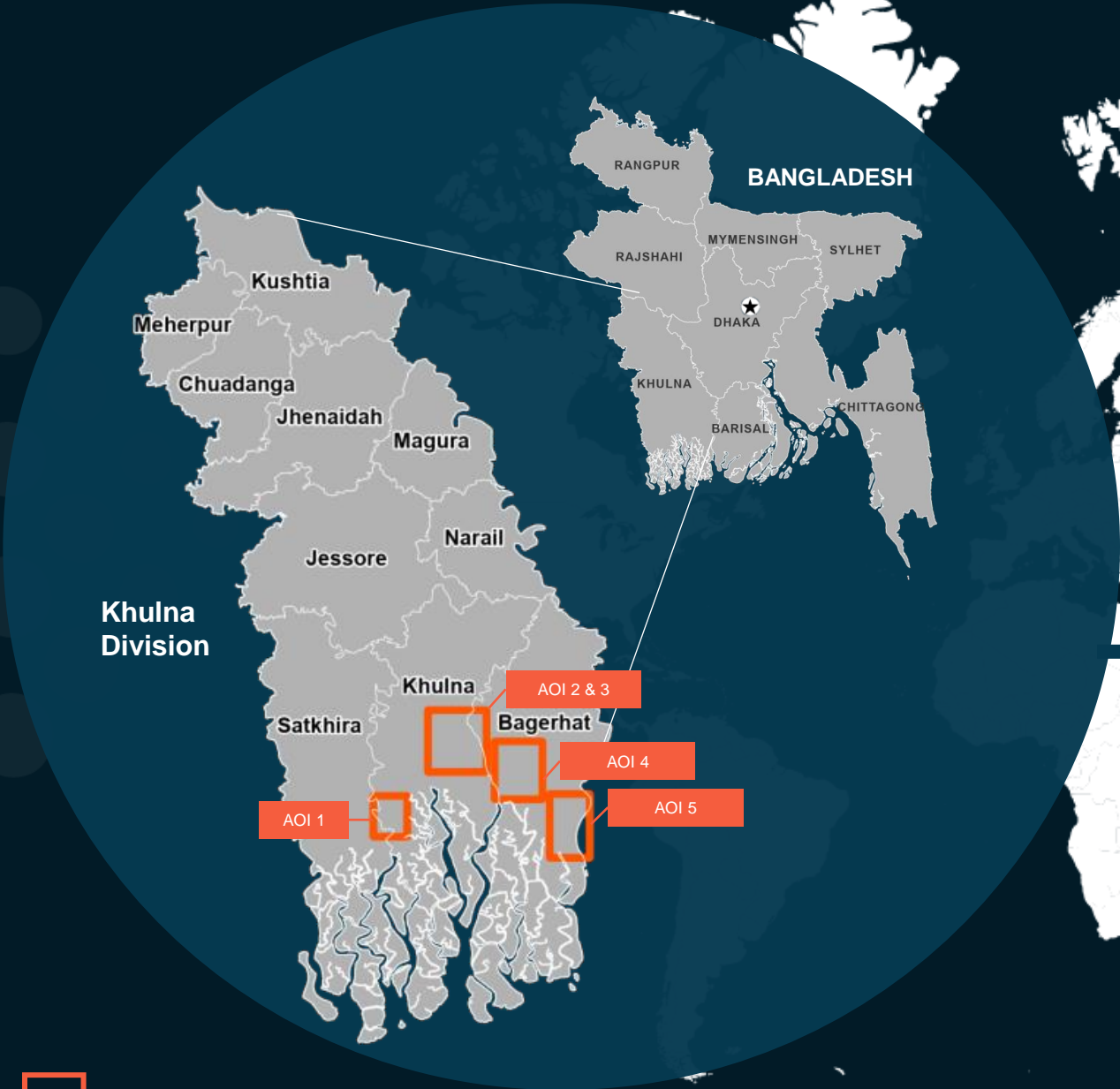
# PRELIMINARY SATELLITE-DERIVED FLOOD IMPACT ASSESSMENT


Khulna Division, Bangladesh



-  Status: Widespread flooding observed
-  Further action(s): Continue monitoring

# BANGLADESH



 Area of interest



# AOI 1 : KOYRA SUB-DISTRICT, KHULNA DISTRICT, KHULNA DIVISION

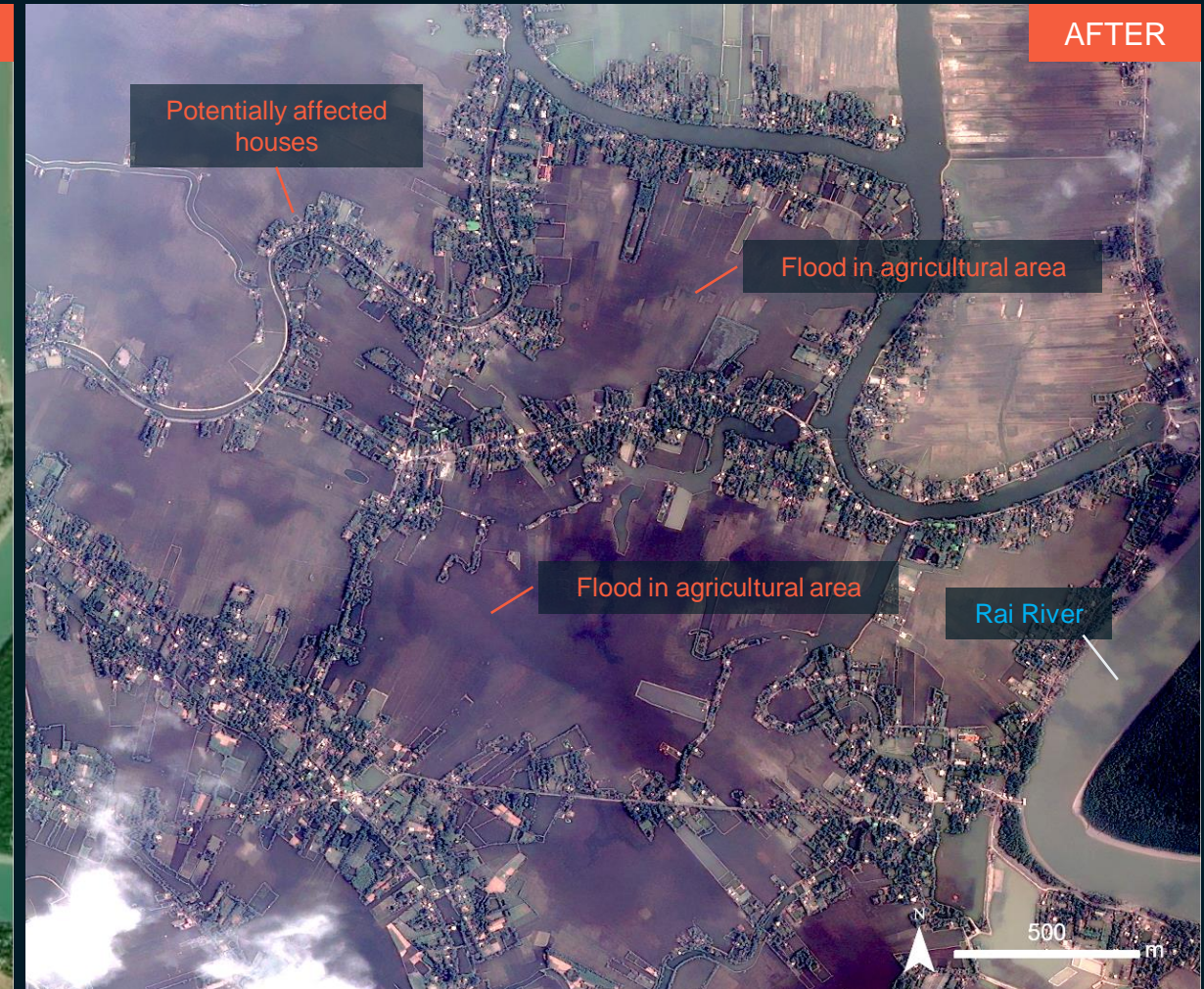
Flood in agricultural area and potentially affected structures

Image center:  
89°19'E  
22°20'46"N

Khulna  
Division



WorldView-3 / 16 December 2022



Pleiades / 30 May 2024



# AOI 2 : PAIKGACHHA SUB-DISTRICT, KHULNA DISTRICT, KHULNA DIVISION

Flood in agricultural area and potentially affected structures

Image center:  
89°26'25"E  
22°37'45"N

Khulna  
Division



GeoEye-1 / 10 April 2023



Pleiades / 30 May 2024



# AOI 3 : DACOPE SUB-DISTRICT, KHULNA DISTRICT, KHULNA DIVISION

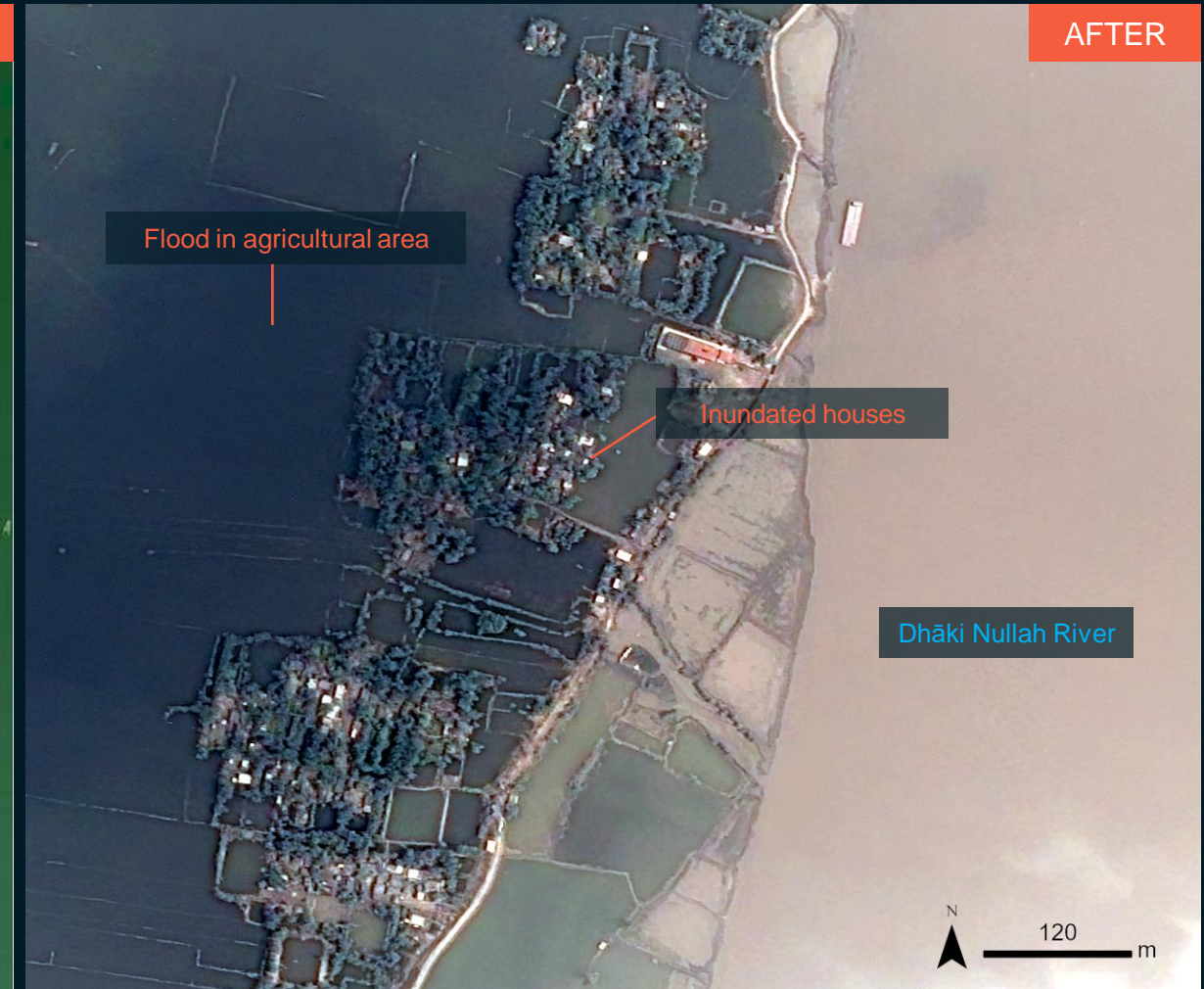
Flood in agricultural area and potentially affected structures

Image center:  
89°26'20"E  
22°31'28"N

Khulna  
Division



GeoEye-1 / 10 April 2023



Pleiades / 30 May 2024



# AOI 4 : RAMPAL SUB-DISTRICT, BAGERHAT DISTRICT, KHULNA DIVISION

Flood in agricultural area and potentially affected structures

Image center:  
89°40'17"E  
22°32'21"N

Khulna  
Division



WorldView-3 / 16 February 2022



Pleiades / 30 May 2024

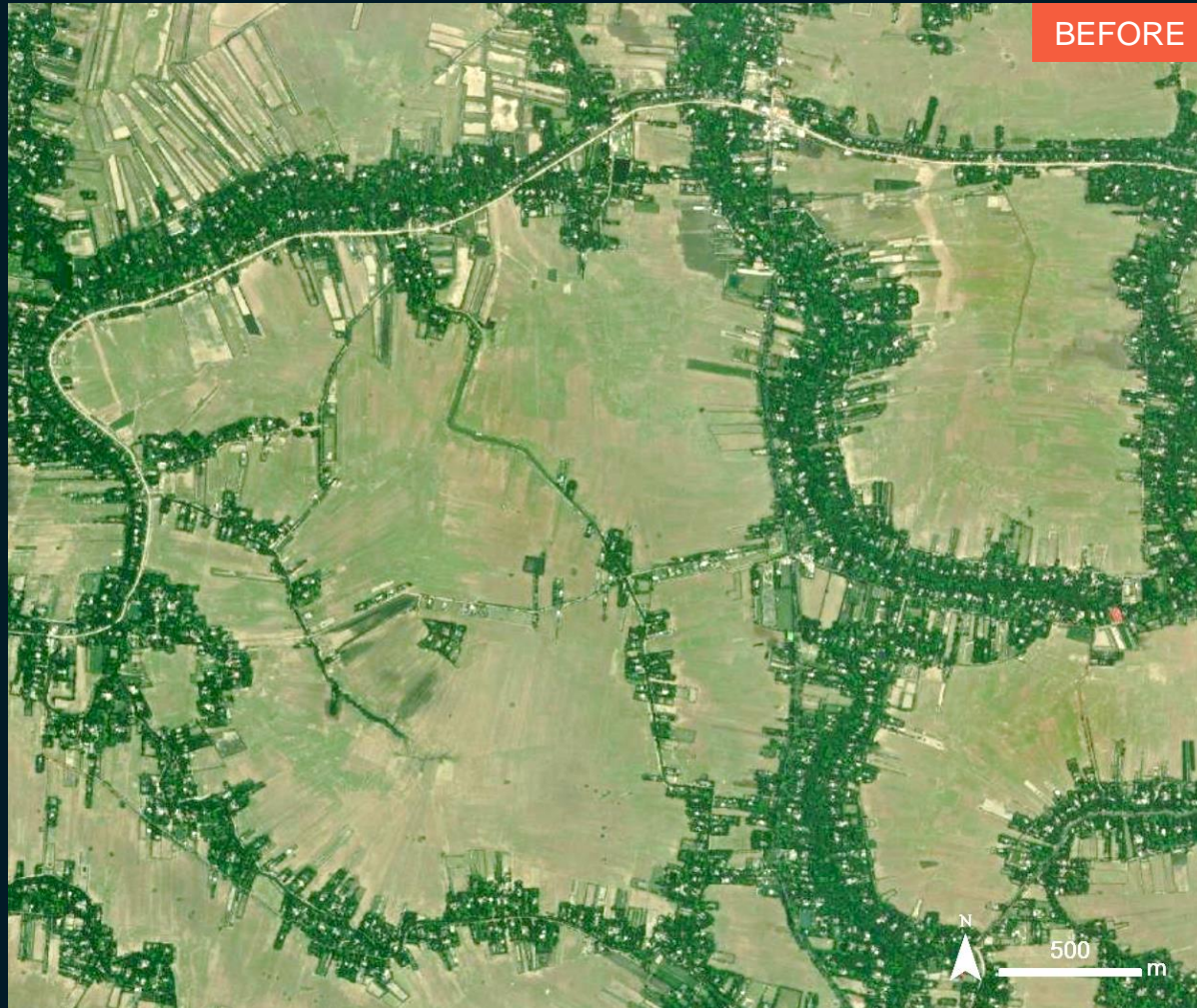


# AOI 5 : SARANKHOLA SUB-DISTRICT, BAGERHAT DISTRICT, KHULNA DIVISION

Flood in agricultural area and potentially affected structures

Image center:  
89°48'32"E  
22°22'47"N

Khulna  
Division



BEFORE

WorldView-3 / 9 April 2023



AFTER

Pleiades / 30 May 2024



# SUMMARY OF FINDINGS

---

- Widespread flooding in agricultural areas including flooded houses are observed in Koyra, Paikgachha and Dacope Sub-districts of Khulna District and Rampal and Sarankhola Sub-districts of Bagerhat District of Khulna Division as of 30 May 2024.



# COPYRIGHTS & SOURCES

## Data sources:

### (1) Satellite Data (Post-event): Pleiades

Imagery Dates: 30 May 2024

Resolution: 50 cm

Copyright: Includes Pleiades material © CNES (2024),  
Distribution Airbus DS.

Source: Airbus Defence and Space

### (2) Satellite Data (Pre-event): GeoEye-1

Imagery Date: 10 April 2023,

Resolution: 50 cm

Copyright: © CNES (2023)

Source: ESRI Basemap

### (3) Satellite Data (Pre-event): WorldView-3

Imagery Date: 16 February 2022, 9 April 2023  
and 16 December

Resolution: 50 cm

Copyright: © CNES (2023)

Source: ESRI Basemap

### (4) Ancillary data

Boundary data: Bangladesh Bureau of Statistics (BBS) contributed to OCHA  
Regional Office for Asia and the Pacific (ROAP), HDX  
Populated place: OpenStreetMap

Analysis: United Nations Satellite Centre (UNOSAT)

Production: United Nations Satellite Centre (UNOSAT)



 **@UNOSAT**

 **@UNITAR.unosat**

 **/UNOSAT**



**UNOSAT**, United Nations Institute for Training  
and Research (UNITAR)  
7 bis, Avenue de la Paix, CH-1202 Geneva 2,  
Switzerland

T +41 22 917 4720  
E [unosat@unitar.org](mailto:unosat@unitar.org)  
[www.unosat.org](http://www.unosat.org)