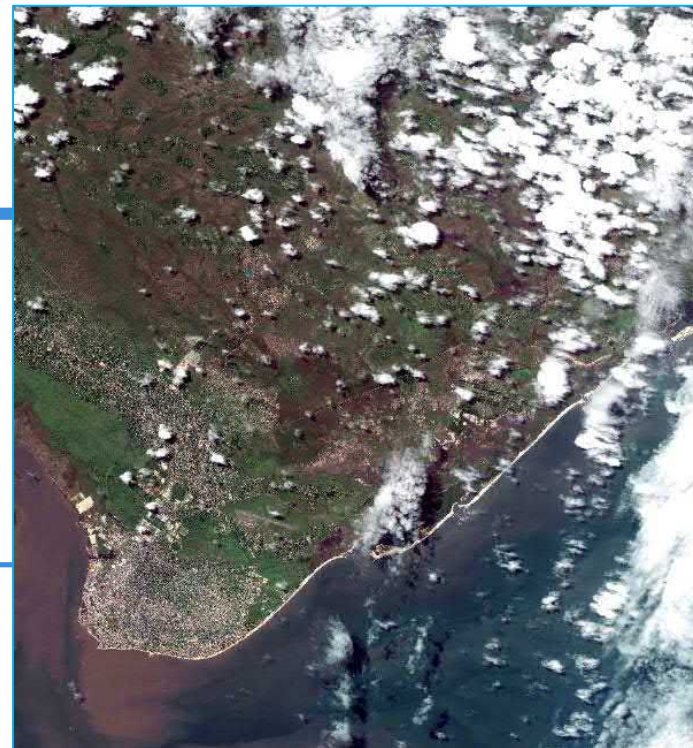


Estimation of potentially affected buildings
Cidade Da Beira District,
Sofala Province, Mozambique
19 March 2019



GeoEye-1 image collected on 13 March 2019
Copyright: © 2019 DigitalGlobe, Inc.



20 March 2019

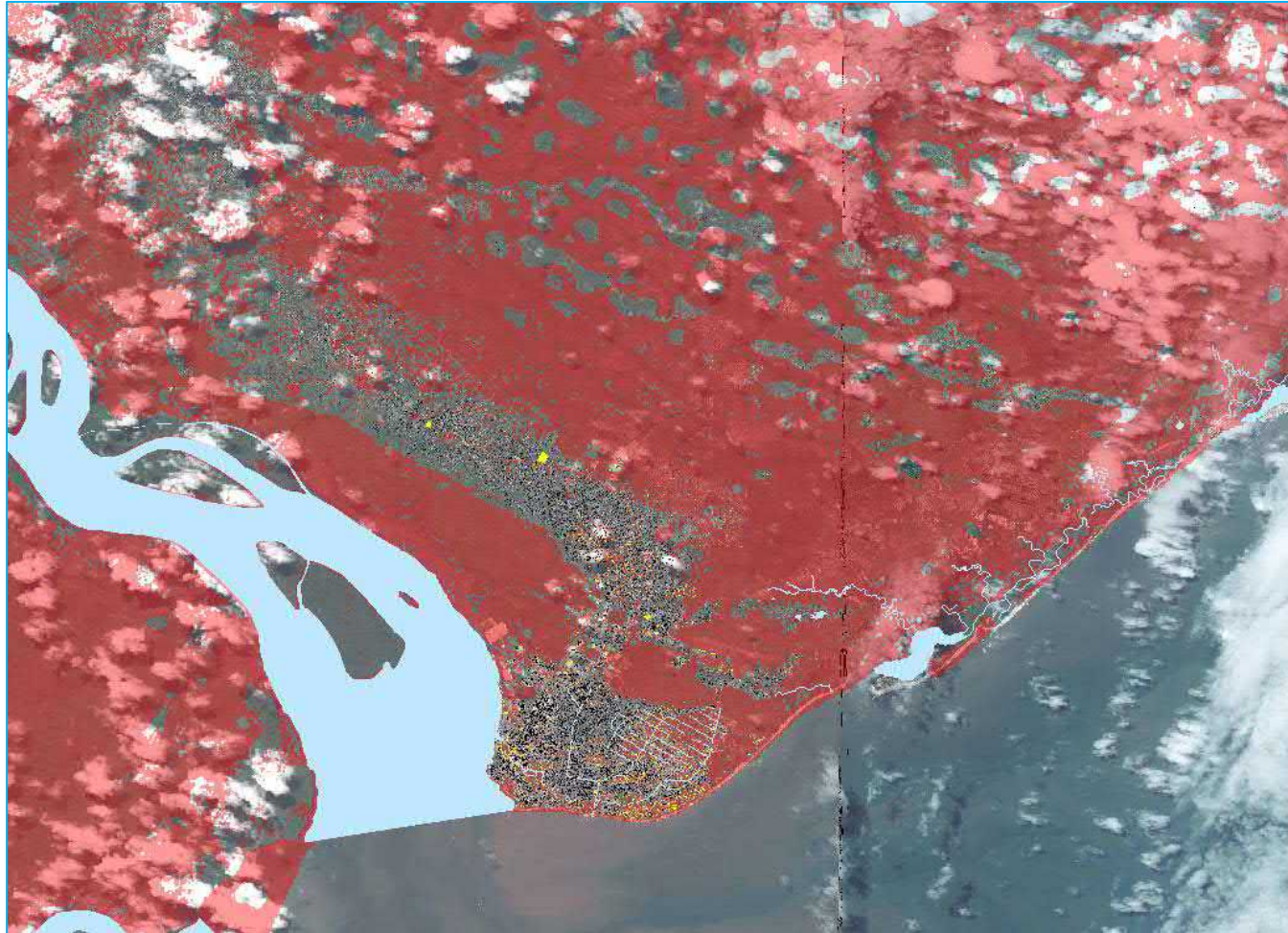
UNITAR – UNOSAT has performed an estimation of potentially affected buildings in Cidade Da Beira District, Sofala Province, Mozambique, using the following data:

- Two GeoEye-1 data images acquired on 13 March 2019 as pre-event image ;
- The latest building footprint OSM, within Cidade Da Beira District in Sofala Province ;
- The satellite detected waters extent as of 19 March 2019, extracted from Sentinel-1 data (10m of resolution), produced by UNITAR – UNOSAT.



Imagery Copyright: DigitalGlobe, Inc

This is a preliminary analysis and has not yet been validated in the field. Please send ground feedback to UNITAR - UNOSAT.



Imagery Copyright: DigitalGlobe, Inc

- Within Cidade Da Beira District: **100,366 buildings**
- Potentially affected by the satellite detected waters extent as of 19 March: **17,446 buildings**



Imagery Copyright: DigitalGlobe, Inc

UNITAR Operational Satellite Application Programme (UNOSAT)

Contact information:

www.unitar.org/unosat

unosat@unitar.org

T +41 22 767 4020



unitar

United Nations Institute for Training and Research

United Nations Institute for Training and Research

Institut des Nations Unies pour la formation et la recherche

Instituto de las Naciones Unidas para Formación Profesional e Investigaciones

Учебный и научно-исследовательский институт

Организации Объединенных Наций

معهد الأمم المتحدة للتدريب والبحث

联合国训练研究所

Palais des Nations, CH-1211

Geneva 10, Switzerland

T +41 22 917 8400

F +41 22 917 8047

www.unitar.org