



16 Sep. 2022

# PRELIMINARY SATELLITE DERIVED FLOOD EVOLUTION ASSESSMENT

Islamic Republic of Pakistan



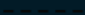
 Status: Overall decreasing flood waters observed

 Further action(s): continue monitoring



# PAKISTAN



-  International boundary
-  Provincial boundary
-  Line of Control

Dotted line represents approximately the Line of Control in Jammu and Kashmir agreed upon by India and Pakistan. The final status of Jammu and Kashmir has not been agreed upon by the parties.  
The boundaries and names shown, and the designations used on this map do not imply official endorsement or acceptance by the United Nations. The United Nations Satellite Centre - UNOSAT is not responsible for the misuse or misrepresentation of the map.

# EVOLUTION OF CUMULATIVE FLOOD IMPACT ASSESSMENT

[01 to 07 Sep. 2022] Vs [08 to 14 Sep. 2022]



**08 to 14 Sep. 22**

**~53,000 km<sup>2</sup>**  
Flood extent

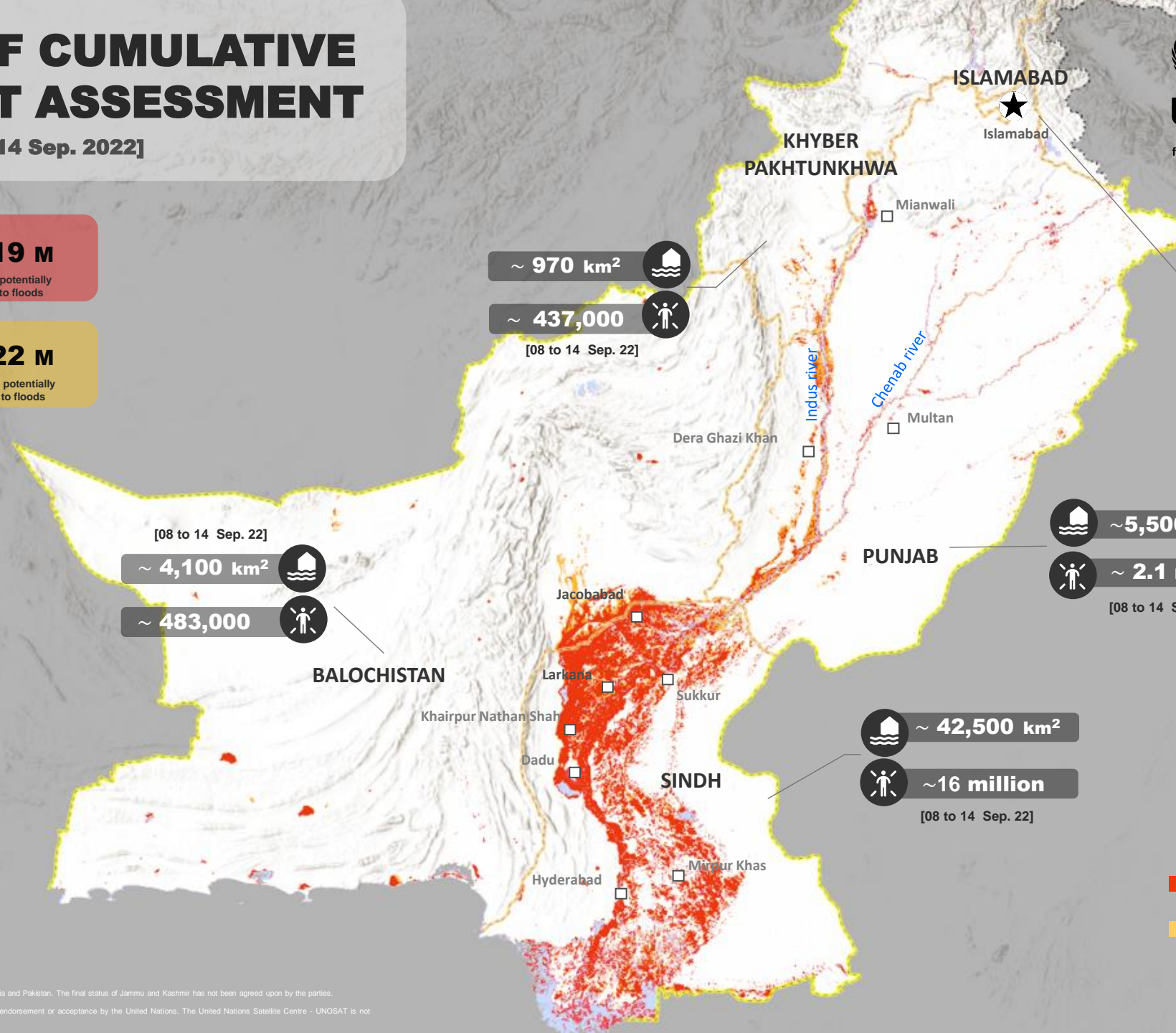
**~19 M**  
Population potentially exposed to floods

---

**01 to 07 Sep. 22**

**~60,000 km<sup>2</sup>**  
Flood extent

**~22 M**  
Population potentially exposed to floods



**~ 970 km<sup>2</sup>**

**~ 437,000**

[08 to 14 Sep. 22]

**~4 km<sup>2</sup>**

**~6,200**

[08 to 14 Sep. 22]

[08 to 14 Sep. 22]

**~ 4,100 km<sup>2</sup>**

**~ 483,000**

**~5,500 km<sup>2</sup>**

**~ 2.1 million**

[08 to 14 Sep. 22]

**~ 42,500 km<sup>2</sup>**

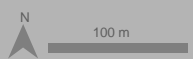
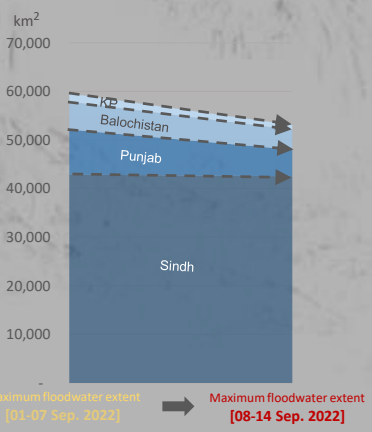
**~16 million**

[08 to 14 Sep. 22]

■ Maximum floodwater extent [08 - 14 Sep. 2022]

■ Maximum floodwater extent [01 - 07 Sep. 2022]

Evolution of maximum floodwater extent [01 to 07 Sep. 2022] Vs [08 to 14 Sep. 2022]

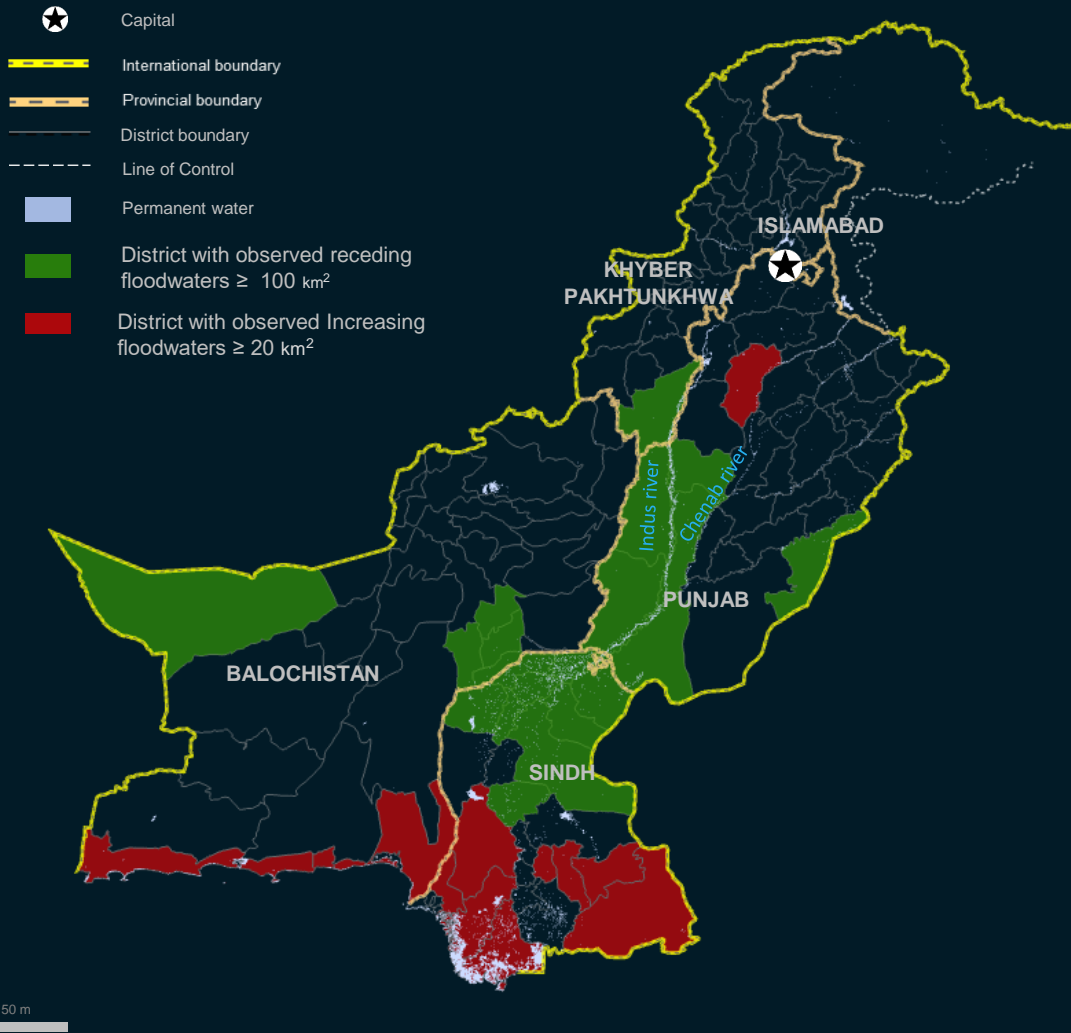


Dotted line represents approximately the Line of Control in Jammu and Kashmir agreed upon by India and Pakistan. The final status of Jammu and Kashmir has not been agreed upon by the parties. The boundaries and names shown, and the designations used on this map do not imply official endorsement or acceptance by the United Nations. The United Nations Satellite Centre - UNOSAT is not responsible for the misuse or misrepresentation of the map.



# EVOLUTION OF CUMULATIVE FLOOD IMPACT ASSESSMENT

[01 to 07 Sep. 2022] Vs [08 to 14 Sep. 2022]



## Punjab province

- Khushab district ↑ 50 km<sup>2</sup>
- Leiah district ↓ 360 km<sup>2</sup>
- Muzaffargarh district ↓ 470 km<sup>2</sup>
- Rahim Yar Khan district ↓ 390 km<sup>2</sup>
- Dera Ghazi Khan district ↓ 610 km<sup>2</sup>
- Rajanpur district ↓ 900 km<sup>2</sup>
- Bahawalnagar district ↓ 140 km<sup>2</sup>

## Balochistan province

- Gwadar district ↑ 40 km<sup>2</sup>
- Lasbela district ↑ 40 km<sup>2</sup>
- Chagai district ↓ 120 km<sup>2</sup>
- Lehri district ↓ 160 km<sup>2</sup>
- Nasirabad district ↓ 350 km<sup>2</sup>
- Jaffarabad district ↓ 300 km<sup>2</sup>
- Jhal Magsi district ↓ 500 km<sup>2</sup>

## Sindh province

- Jamshoro district ↑ 60 km<sup>2</sup>
- Malir Karachi district ↑ 40 km<sup>2</sup>
- Thatta district ↑ 510 km<sup>2</sup>
- Tando Allahyar district ↑ 30 km<sup>2</sup>
- Mirpur Khas district ↑ 160 km<sup>2</sup>
- Umer Kot district ↑ 50 km<sup>2</sup>
- Tharparkar district ↑ 80 km<sup>2</sup>
- Kambar Shahdad Kot district ↓ 220 km<sup>2</sup>
- Jacobabad district ↓ 200 km<sup>2</sup>
- Kashmore district ↓ 500 km<sup>2</sup>
- Shikarpur District ↓ 280 km<sup>2</sup>
- Larkana district ↓ 210 km<sup>2</sup>
- Ghotki district ↓ 520 km<sup>2</sup>
- Sukkur district ↓ 190 km<sup>2</sup>
- Khairpur district ↓ 280 km<sup>2</sup>
- Shaheed Benazir Abad district ↓ 150 km<sup>2</sup>

## Khyber Pakhtunkhwa Province

- D. I. Khan district ↓ 470 km<sup>2</sup>

The dotted line represents approximately the Line of Control in Jammu and Kashmir agreed upon by India and Pakistan. The final status of Jammu and Kashmir has not been agreed upon by the parties. The boundary and names shown on this map do not imply official endorsement or acceptance by the United Nations.

# SUMMARY OF FINDINGS

---

## Evolution of Cumulative Flood Impact Assessment (01 - 07 September Vs 08-14 September 2022):

- From 08 to 14 September 2022 approximately 19 million people remain potentially exposed or living close to flooded areas;
- Based on satellite observations from 01-07 September 2022 and 08-14 September 2022, the overall flood situation appears to be decreasing with approximately 1,700 km<sup>2</sup> in Balochistan, ~Punjab 3,900 km<sup>2</sup> and ~850 km<sup>2</sup> in Sindh.

# COPYRIGHTS AND SOURCES

Data sources:

## (1) Satellite Image (Post-event)

Satellite Data : NOAA-20/VIIRS

Imagery Date: 01 to 31 August 2022, 25 to 31 August 2022, 01 to 07 September 2022 & 08 to 14 September 2022

Resolution: 375m

Copyright: NOAA/Suomi NPP

Source: NOAA

## (2) Ancillary data

Administrative boundaries: OCHA Field Information Services Section (FISS) [14 September 2022]

Analysis: UNITAR-UNOSAT

Production: UNITAR-UNOSAT

The dotted line represents approximately the Line of Control in Jammu and Kashmir agreed upon by India and Pakistan. The final status of Jammu and Kashmir has not been agreed upon by the parties. The boundary and names shown on this map do not imply official endorsement or acceptance by the United Nations.

 **@UNOSAT**

 **@UNITAR.unosat**



**UNOSAT**, United Nations Institute for Training  
and Research (UNITAR)  
7 bis, Avenue de la Paix, CH-1202 Geneva 2,  
Switzerland

T +41 22 917 4720  
E [unosat@unitar.org](mailto:unosat@unitar.org)  
[www.unosat.org](http://www.unosat.org)