

11 October 2021

PRELIMINARY SATELLITE- DERIVED FLOOD ASSESSMENT

Lower Northeastern Part of Thailand

การประเมินพื้นที่น้ำท่วมด้วยข้อมูลจากดาวเทียมพื้นที่ภาคตะวันออกเฉียงเหนือตอนล่าง
ณ วันที่ 11 ตุลาคม 2564



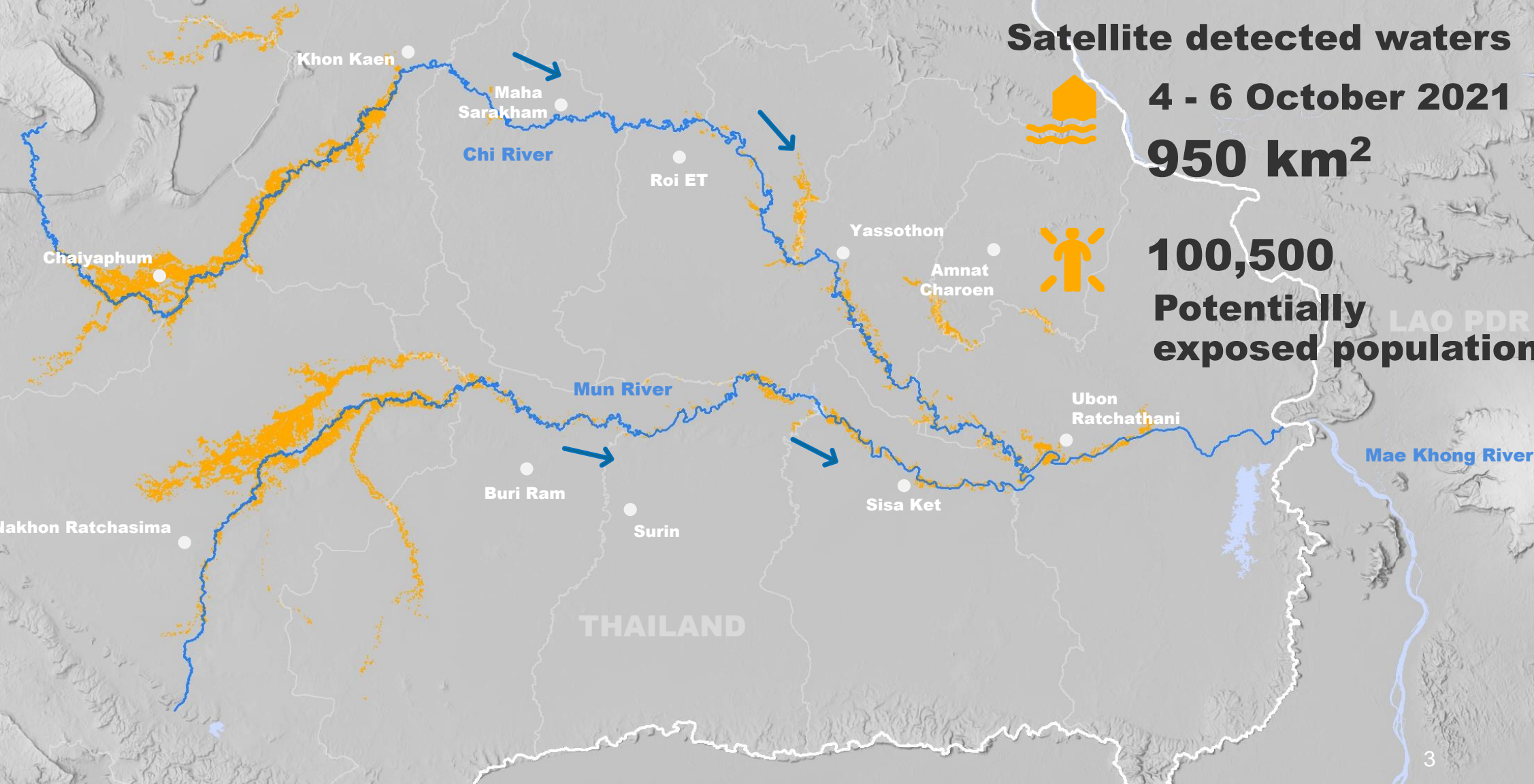
LOWER NORTHEASTERN PART, THAILAND



LOWER NORTHEASTERN PART

ภาคตะวันออกเฉียงเหนือตอนล่าง

Thailand



Satellite detected waters

4 - 6 October 2021

950 km²



100,500

Potentially exposed population



LAO PDR

THAILAND

LOWER NORTHEASTERN PART

ภาคตะวันออกเฉียงเหนือตอนล่าง

Thailand



Satellite detected waters

11 October 2021

715 km²



70,400

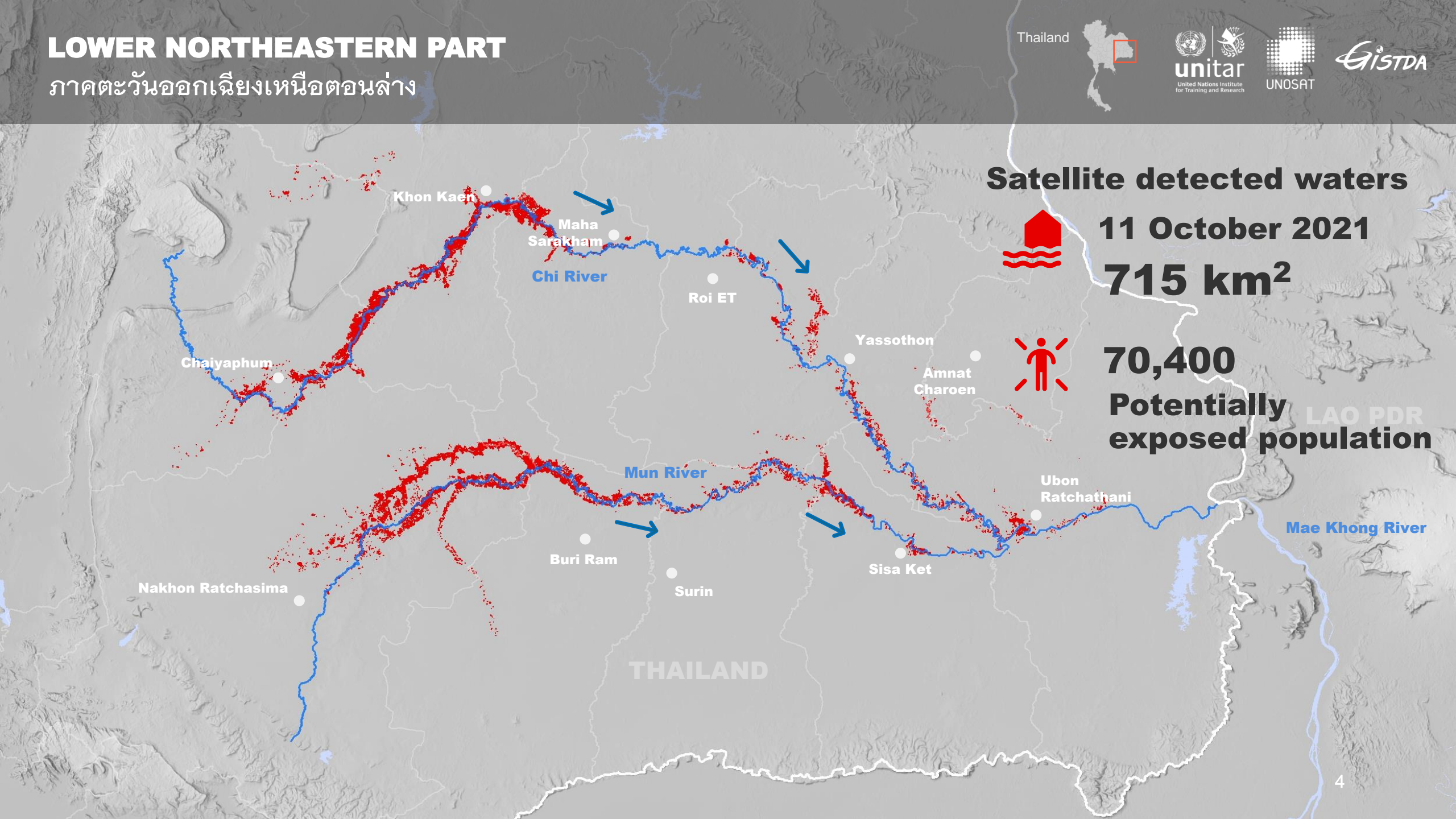
Potentially exposed population



LAO PDR

Mae Khong River

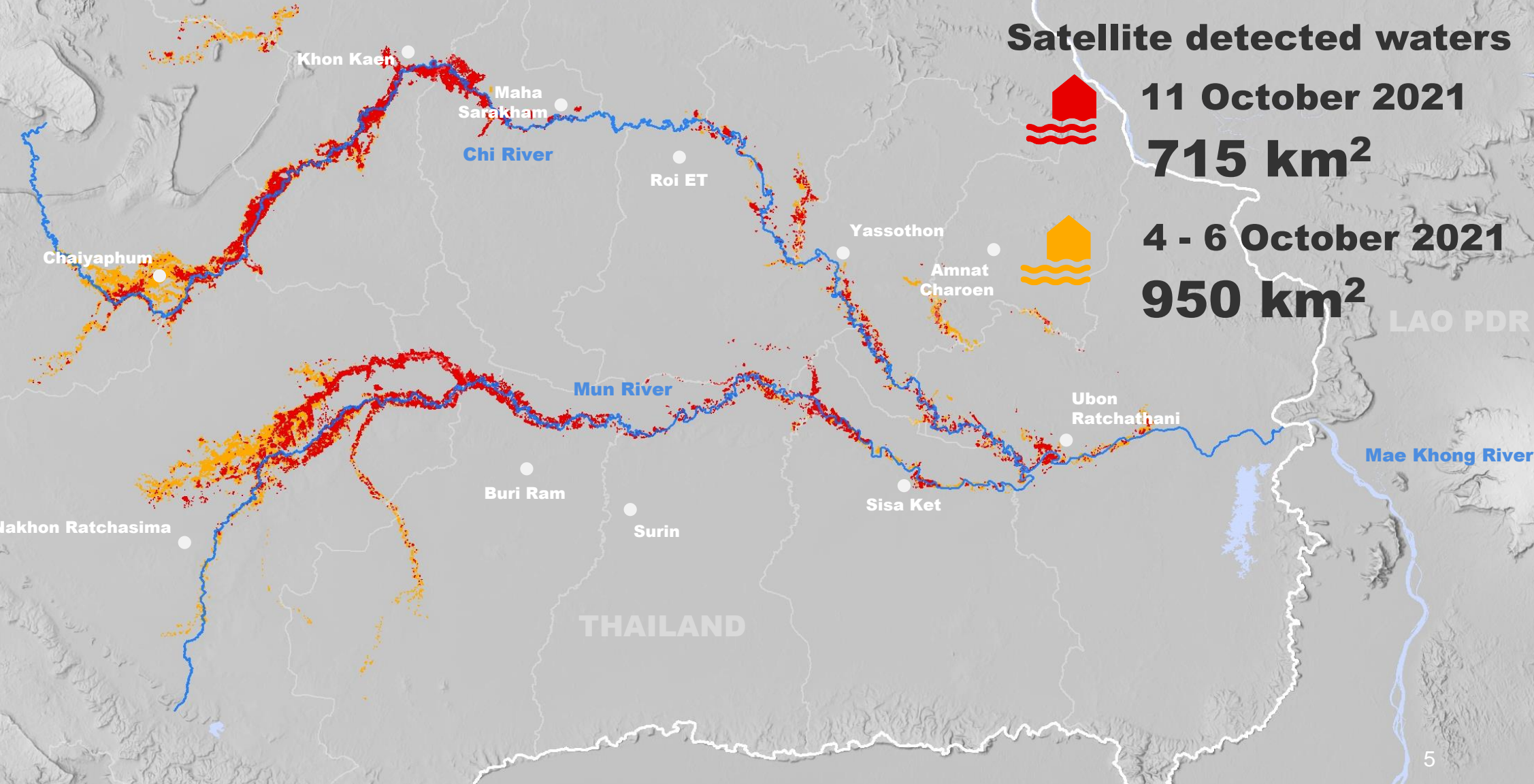
THAILAND



LOWER NORTHEASTERN PART

ภาคตะวันออกเฉียงเหนือตอนล่าง

Thailand



Satellite detected waters



11 October 2021

715 km²



4 - 6 October 2021

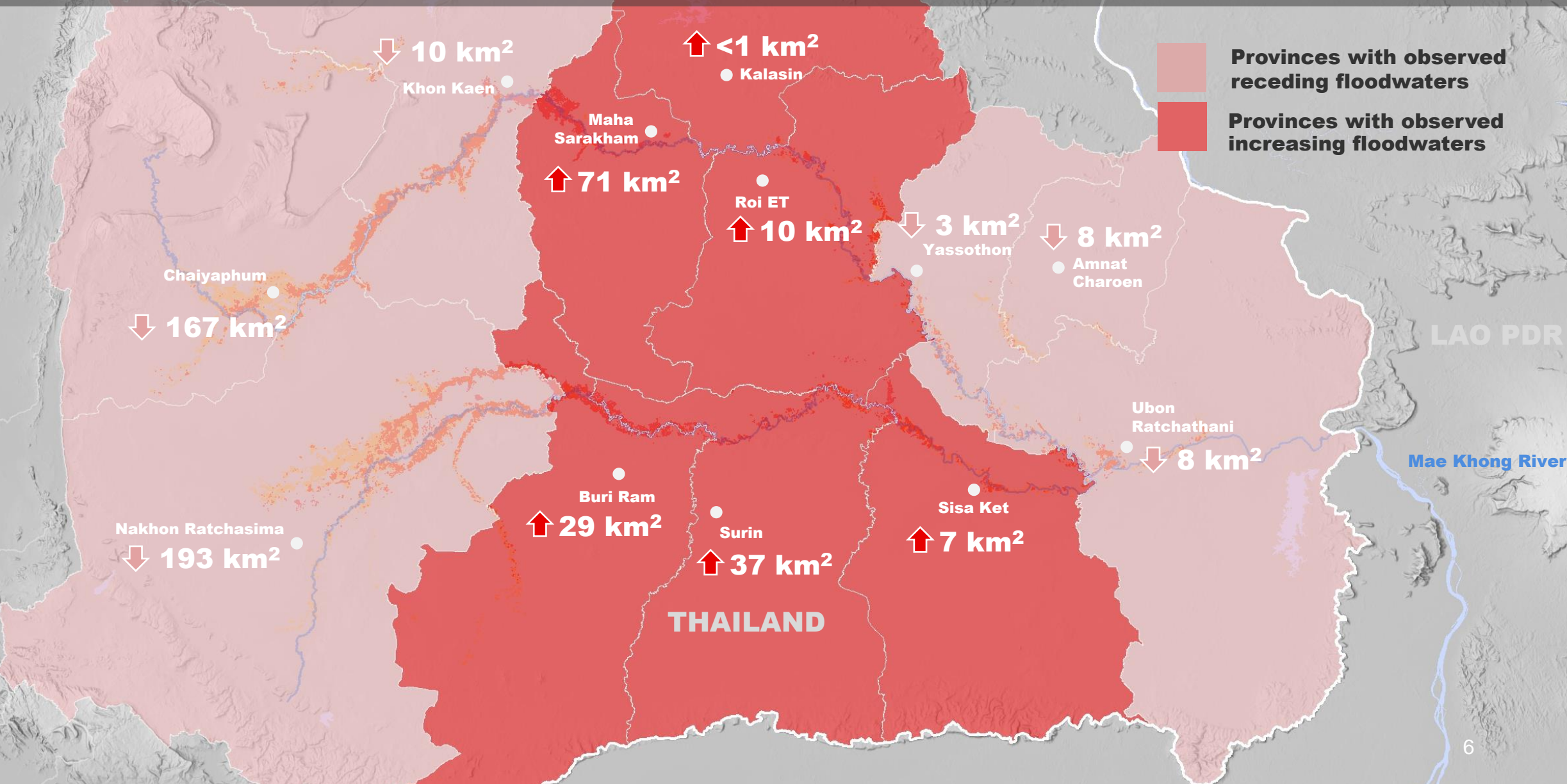
950 km²

LAO PDR

LOWER NORTHEASTERN PART

ภาคตะวันออกเฉียงเหนือตอนล่าง

Thailand



Provinces with observed receding floodwaters

Provinces with observed increasing floodwaters

LAO PDR

Mae Khong River

THAILAND

SUMMARY OF FINDINGS

- Receding floodwaters observed in Lower Northeastern Region as of 11 October 2021;
- Floodwaters observed in 12 provinces as of 11 October 2021;
- Receding floodwaters observed in Chaiyaphum, Nakhon Ratchasima, Khon Kaen, Yassothon, Amnat Chareon, and Ubon Ratchathani provinces as of 11 October 2021;
- Floodwaters increase observed in Maha Sarakham, Buri Ram, Surin, Roi ET, Si Sa Ket and Kalasin provinces as of 11 October 2021.

COPYRIGHTS AND SOURCES

Data sources:

(1) Satellite Image [Pre-image]

Sentinel-1 / 3 October 2021 at 23:00 UTC
Sentinel-1 / 6 October 2021 at 11:12 UTC
Resolution: 10m
Copyright: Contains modified Copernicus Sentinel Data [2021]
Source: ESA

(2) Satellite Image [Post-image]

Sentinel-1 / 10 October 2021 at 22:52 UTC
Sentinel-1 / 11 October 2021 at 11:21 UTC
Resolution: 10m
Copyright: Contains modified Copernicus Sentinel Data [2021]
Source: ESA

(3) Ancillary data

Flood data: GISTDA, Thailand (flood.gistda.or.th)
Administrative boundaries: Royal Thai Survey Department
Road : Open Street Map
Waterways: Open Street Map
Background: ALOS Global DSM

Analysis: United Nations Satellite Centre (UNOSAT)
Production: United Nations Satellite Centre (UNOSAT)

 **@UNOSAT**

 **@UNITAR.unosat**



UNOSAT, United Nations Institute for Training
and Research (UNITAR)
7 bis, Avenue de la Paix, CH-1202 Geneva 2,
Switzerland

T +41 22 917 4720
E unosat@unitar.org
www.unosat.org