

21 October 2021

PRELIMINARY SATELLITE- DERIVED FLOOD ASSESSMENT

Central and Western Part of Thailand

การประเมินพื้นที่น้ำท่วมด้วยข้อมูลจากดาวเทียมพื้นที่ภาคกลางและภาคตะวันตก
ณ วันที่ 21 ตุลาคม 2564



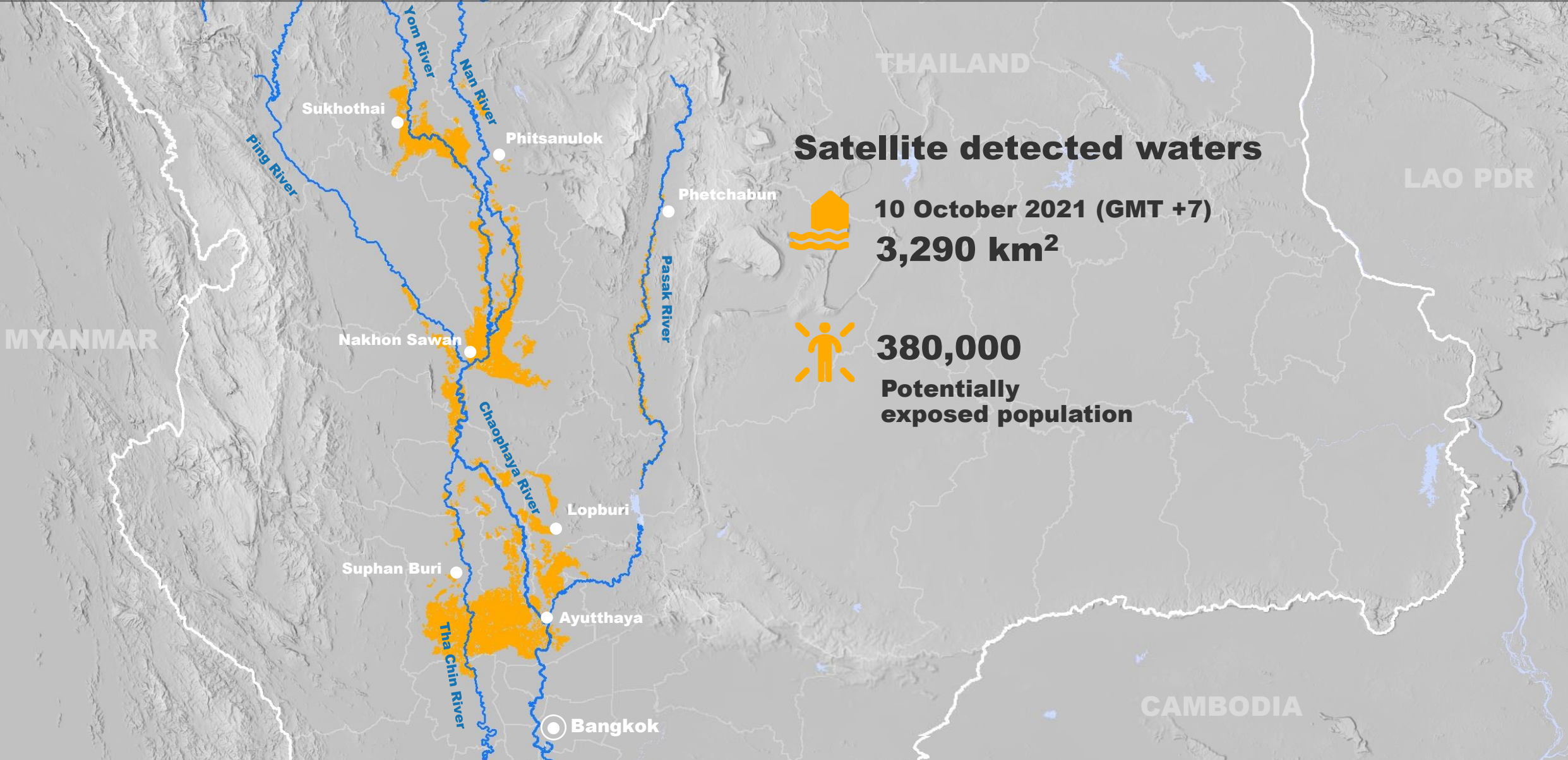
CENTRAL AND WESTERN PART, THAILAND



CENTRAL AND WESTERN PART

ภาคกลางและภาคตะวันตก

Thailand



Satellite detected waters



10 October 2021 (GMT +7)
3,290 km²

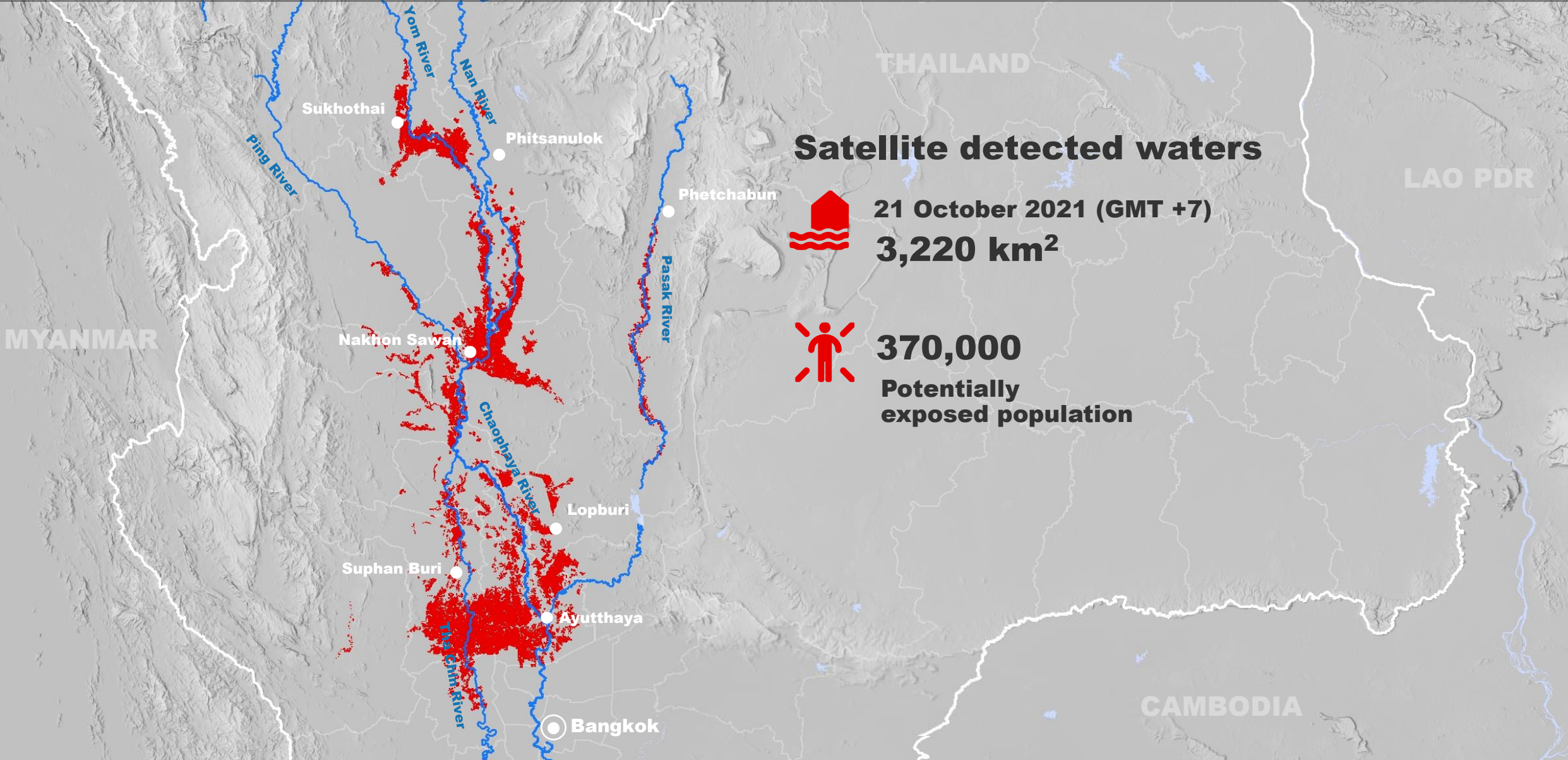


380,000
Potentially
exposed population

CENTRAL AND WESTERN PART

ภาคกลางและภาคตะวันตก

Thailand



Satellite detected waters



21 October 2021 (GMT +7)
3,220 km²

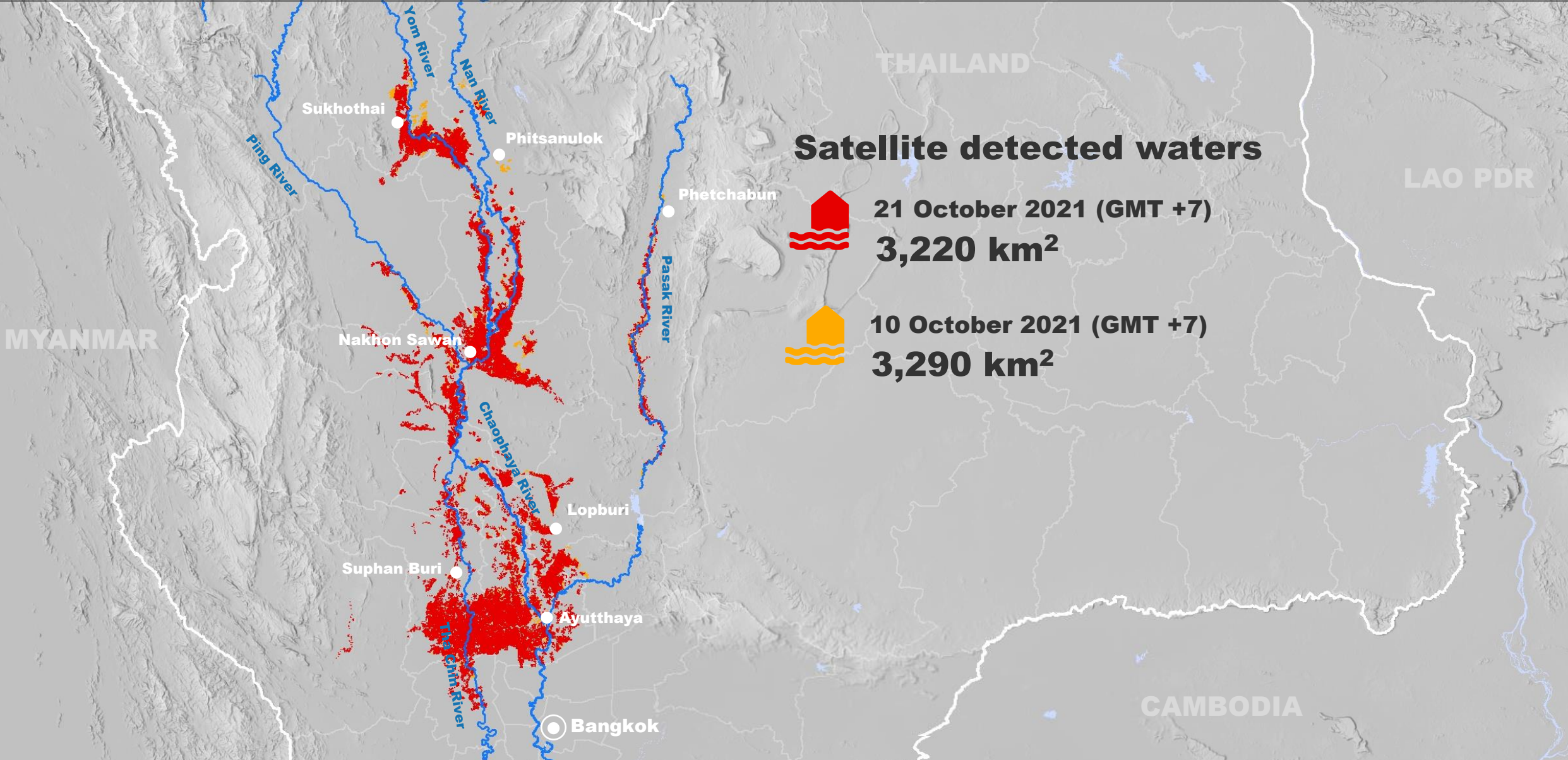


370,000
Potentially
exposed population

CENTRAL AND WESTERN PART

ภาคกลางและภาคตะวันตก

Thailand



Satellite detected waters



21 October 2021 (GMT +7)
3,220 km²

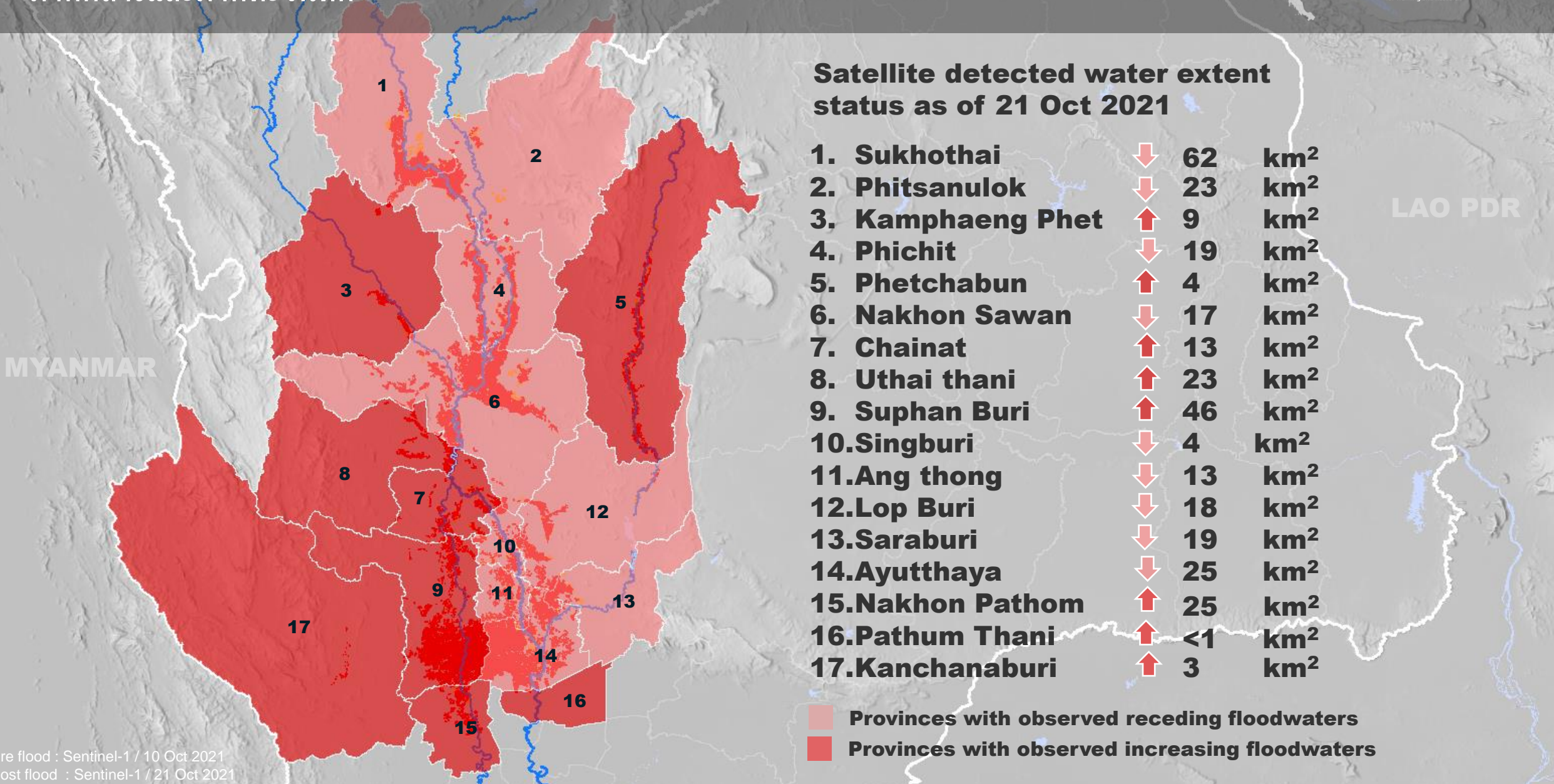


10 October 2021 (GMT +7)
3,290 km²

CENTRAL AND WESTERN PART

ภาคกลางและภาคตะวันตก

Thailand



Satellite detected water extent status as of 21 Oct 2021

1. Sukhothai	↓	62	km ²
2. Phitsanulok	↓	23	km ²
3. Kamphaeng Phet	↑	9	km ²
4. Phichit	↓	19	km ²
5. Phetchabun	↑	4	km ²
6. Nakhon Sawan	↓	17	km ²
7. Chainat	↑	13	km ²
8. Uthai thani	↑	23	km ²
9. Suphan Buri	↑	46	km ²
10. Singburi	↓	4	km ²
11. Ang thong	↓	13	km ²
12. Lop Buri	↓	18	km ²
13. Saraburi	↓	19	km ²
14. Ayutthaya	↓	25	km ²
15. Nakhon Pathom	↑	25	km ²
16. Pathum Thani	↑	<1	km ²
17. Kanchanaburi	↑	3	km ²

- Provinces with observed receding floodwaters
- Provinces with observed increasing floodwaters

LAO PDR

MYANMAR

SUMMARY OF FINDINGS

- Floodwaters observed in 17 provinces as of 21 October 2021;
- Receding floodwaters observed in Central Region as of 21 October 2021;
- Receding floodwaters observed in Sukhothai, Phitsanulok, Phichit, Nakhon Sawan, Sing Buri, Ang Thong, Ayutthaya, Lop Buri, and Saraburi provinces as of 21 October 2021;
- Floodwaters increase observed in Kamphaeng Phet, Phetchabun, Uthai Thani, Chai Nat, Suphan Buri, Nakhon Pathom, Pathum Thani, and Kanchanaburi provinces as of 21 October 2021.

COPYRIGHTS AND SOURCES

Data sources:

(1) Satellite Image [Pre-image]

Sentinel-1 / 10 October 2021 at 11:28 UTC

Resolution: 10m

Copyright: Contains modified Copernicus Sentinel Data [2021]

Source: ESA

(2) Satellite Image [Post-image]

Sentinel-1 / 20 October 2021 at 23:08 UTC

Resolution: 10m

Copyright: Contains modified Copernicus Sentinel Data [2021]

Source: ESA

(3) Ancillary data

Administrative boundaries: Royal Thai Survey Department

Reference water : ESRI 2020 Land Cover

Waterways: Open Street Map

Background: ALOS Global DSM

Analysis : United Nations Satellite Centre (UNOSAT)

Machine learning method

Production: United Nations Satellite Centre (UNOSAT)

 **@UNOSAT**

 **@UNITAR.unosat**



UNOSAT, United Nations Institute for Training
and Research (UNITAR)
7 bis, Avenue de la Paix, CH-1202 Geneva 2,
Switzerland

T +41 22 917 4720
E unosat@unitar.org
www.unosat.org